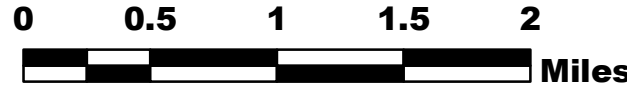


# SILVER CREEK WY-MRF-000312



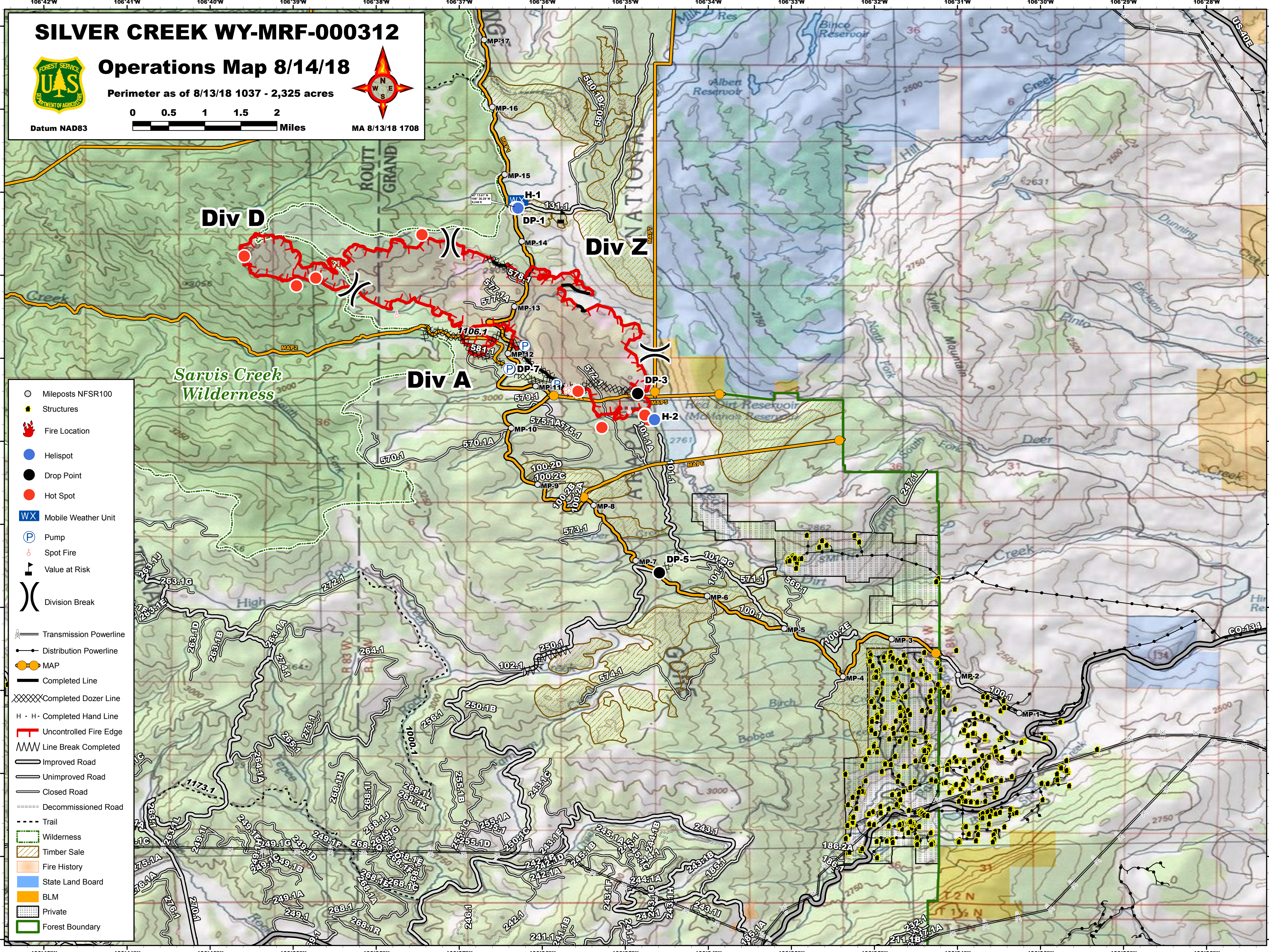
## Operations Map 8/14/18

Perimeter as of 8/13/18 1037 - 2,325 acres



MA 8/13/18 1708

Datum NAD83



- Mileposts NFSR100
- Structures
- 🔥 Fire Location
- Helispot
- Drop Point
- Hot Spot
- WX Mobile Weather Unit
- P Pump
- ⚡ Spot Fire
- 🚒 Value at Risk
- ) Division Break
- Transmission Powerline
- Distribution Powerline
- MAP
- Completed Line
- XXXXX Completed Dozer Line
- H - H - Completed Hand Line
- 🔴 Uncontrolled Fire Edge
- ⋈ Line Break Completed
- Improved Road
- Unimproved Road
- Closed Road
- Decommissioned Road
- - - Trail
- 🌿 Wilderness
- ▨ Timber Sale
- 🔥 Fire History
- 🇺🇸 State Land Board
- 🟡 BLM
- ▨ Private
- 🌿 Forest Boundary