

106°38'W 106°37'W 106°36'W 106°35'W 106°34'W

SILVER CREEK WY-MRF-000312



Division Z Map 8/15/18

Perimeter as of 8/14/18 2131 - 3,324 acres

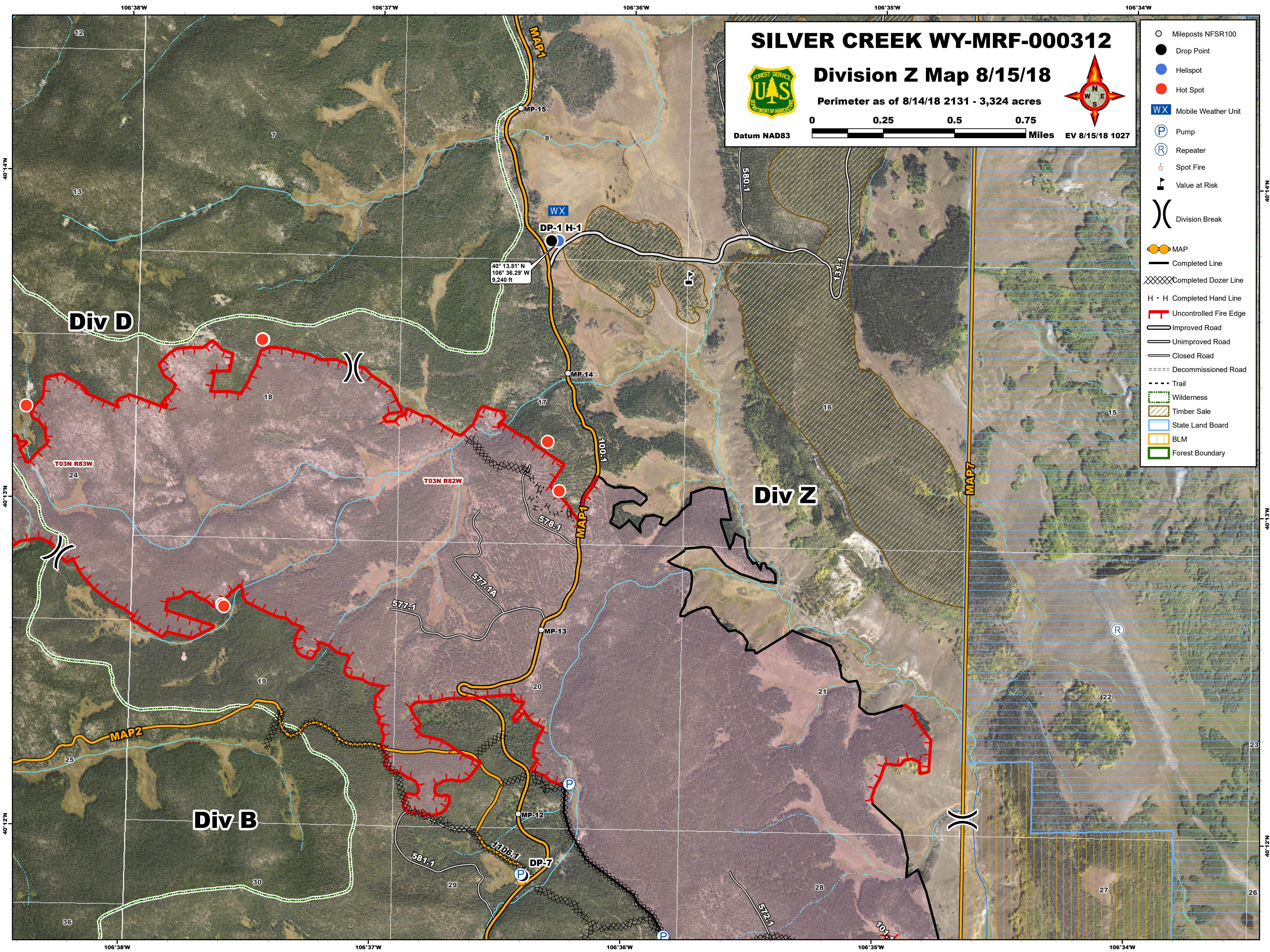


Datum NAD83



EV 8/15/18 1027

- Mileposts NFSR100
- Drop Point
- Helispot
- Hot Spot
- Mobile Weather Unit
- Pump
- Repeater
- Spot Fire
- Value at Risk
- Division Break
- MAP
- Completed Line
- Completed Dozer Line
- H - H Completed Hand Line
- Uncontrolled Fire Edge
- Improved Road
- Unimproved Road
- Closed Road
- Decommissioned Road
- Trail
- Wilderness
- Timber Sale
- State Land Board
- BLM
- Forest Boundary



40°14'N 40°13'N 40°12'N

106°38'W 106°37'W 106°36'W 106°35'W 106°34'W