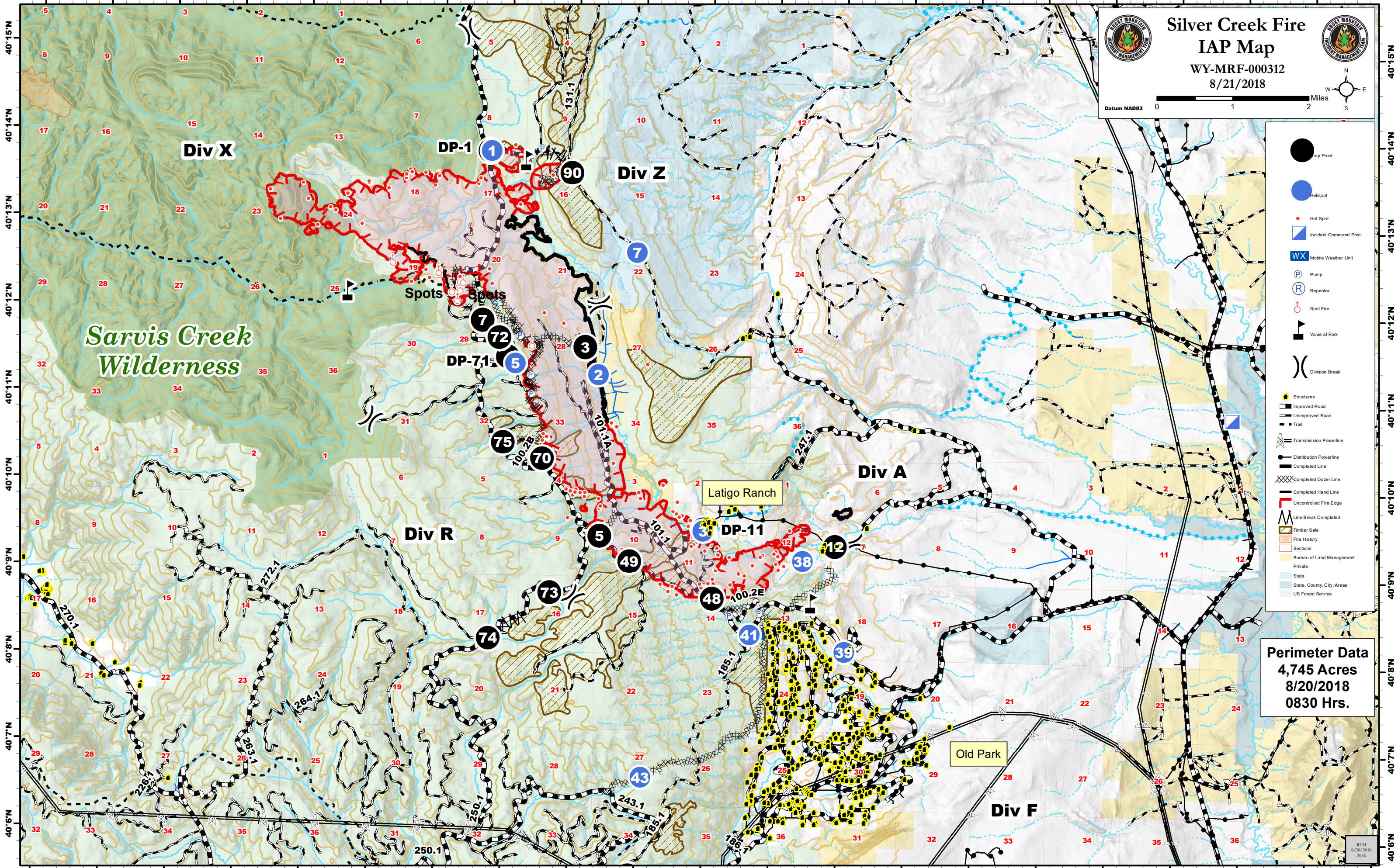


106°43'W 106°42'W 106°41'W 106°40'W 106°39'W 106°38'W 106°37'W 106°36'W 106°35'W 106°34'W 106°33'W 106°32'W 106°31'W 106°30'W 106°29'W 106°28'W 106°27'W 106°26'W 106°25'W 106°24'W



Silver Creek Fire
IAP Map
 WY-MRF-000312
 8/21/2018

Datum NAD83 0 1 2 Miles

- Drop Point
- Helispot
- Hot Spot
- Incident Command Post
- Mobile Weather Unit
- Pump
- Repeater
- Spot Fire
- Value at Risk
- Division Break
- Structures
- Improved Road
- Unimproved Road
- Trail
- Transmission Powerline
- Distribution Powerline
- Completed Line
- Completed Dozer Line
- Completed Hand Line
- Uncontrolled Fire Edge
- Line Break Completed
- Timber Sale
- Fire History
- Sections
- Bureau of Land Management
- Private
- State
- State, County, City, Areas
- US Forest Service

Perimeter Data
 4,745 Acres
 8/20/2018
 0830 Hrs.

106°43'W 106°42'W 106°41'W 106°40'W 106°39'W 106°38'W 106°37'W 106°36'W 106°35'W 106°34'W 106°33'W 106°32'W 106°31'W 106°30'W 106°29'W 106°28'W 106°27'W 106°26'W 106°25'W 106°24'W 106°23'W