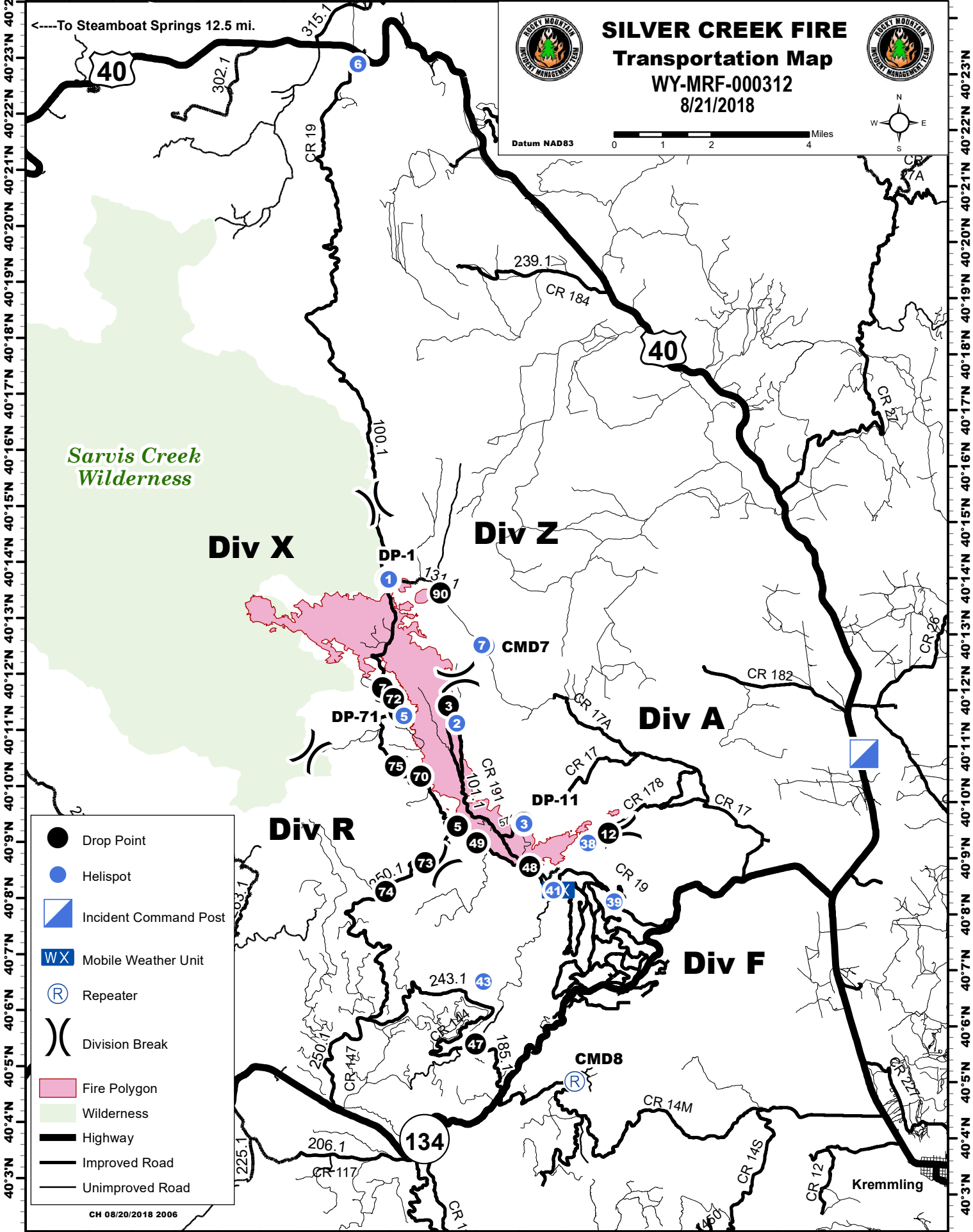
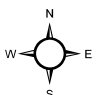


106°44'W 106°42'W 106°40'W 106°38'W 106°36'W 106°34'W 106°32'W 106°30'W 106°28'W 106°26'W 106°24'W



SILVER CREEK FIRE
Transportation Map
 WY-MRF-000312
 8/21/2018



Datum NAD83

0 1 2 4 Miles

- Drop Point
- Helispot
- Incident Command Post
- Mobile Weather Unit
- Repeater
- Division Break
- Fire Polygon
- Wilderness
- Highway
- Improved Road
- Unimproved Road

CH 08/20/2018 2006

106°44'W 106°42'W 106°40'W 106°38'W 106°36'W 106°34'W 106°32'W 106°30'W 106°28'W 106°26'W 106°24'W

40°3'N 40°4'N 40°5'N 40°6'N 40°7'N 40°8'N 40°9'N 40°10'N 40°11'N 40°12'N 40°13'N 40°14'N 40°15'N 40°16'N 40°17'N 40°18'N 40°19'N 40°20'N 40°21'N 40°22'N 40°23'N 40°24'N

40°3'N 40°4'N 40°5'N 40°6'N 40°7'N 40°8'N 40°9'N 40°10'N 40°11'N 40°12'N 40°13'N 40°14'N 40°15'N 40°16'N 40°17'N 40°18'N 40°19'N 40°20'N 40°21'N 40°22'N 40°23'N 40°24'N