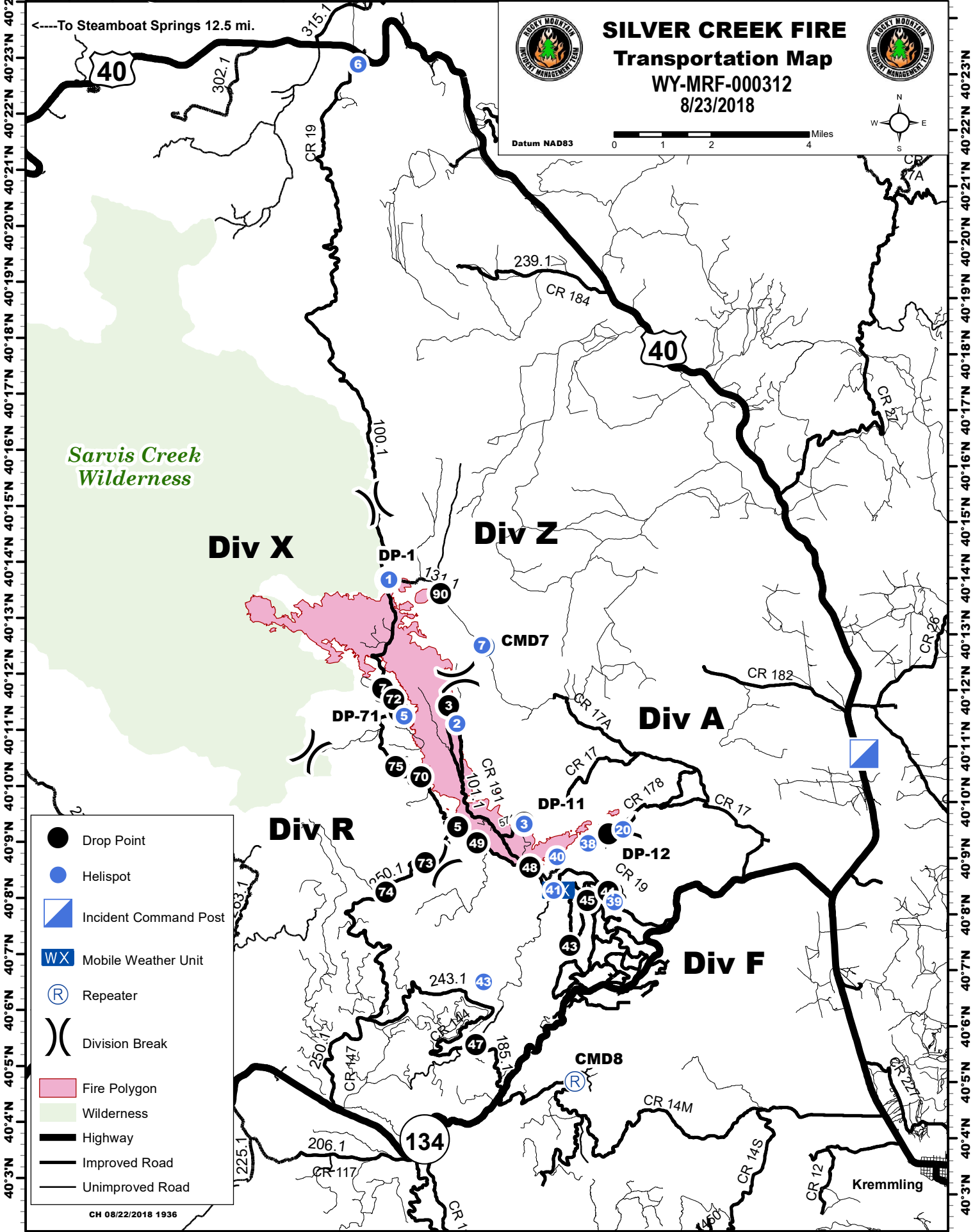


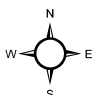
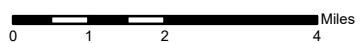
106°44'W 106°42'W 106°40'W 106°38'W 106°36'W 106°34'W 106°32'W 106°30'W 106°28'W 106°26'W 106°24'W



SILVER CREEK FIRE
Transportation Map
 WY-MRF-000312
 8/23/2018



Datum NAD83



- Drop Point
- Helispot
- Incident Command Post
- Mobile Weather Unit
- Repeater
- Division Break
- Fire Polygon
- Wilderness
- Highway
- Improved Road
- Unimproved Road

CH 08/22/2018 1936

106°44'W 106°42'W 106°40'W 106°38'W 106°36'W 106°34'W 106°32'W 106°30'W 106°28'W 106°26'W 106°24'W