

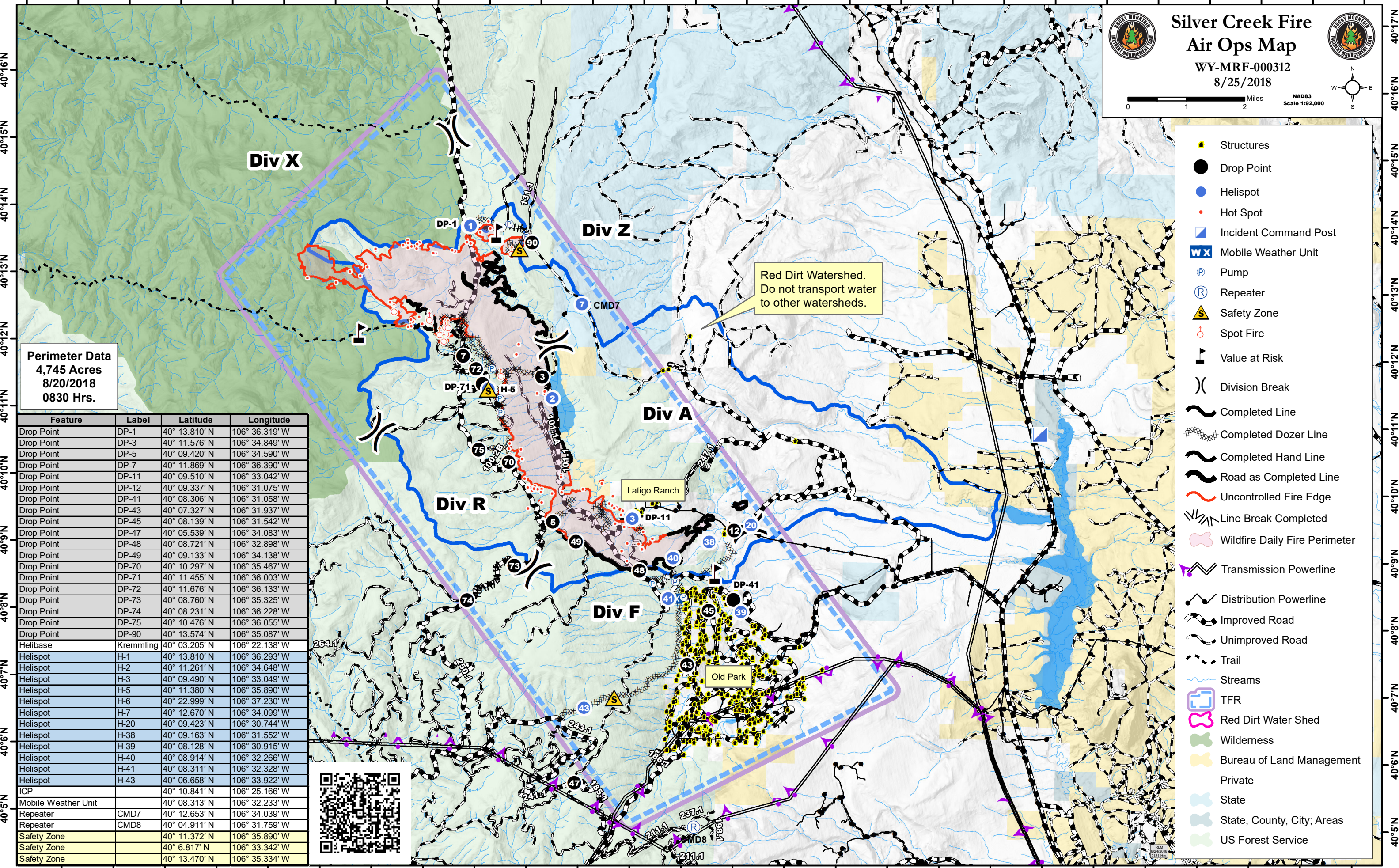
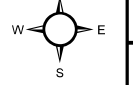


# Silver Creek Fire Air Ops Map

WY-MRF-000312  
8/25/2018



0 1 2 Miles  
NAD83  
Scale 1:92,000



**Perimeter Data**  
4,745 Acres  
8/20/2018  
0830 Hrs.

Feature	Label	Latitude	Longitude
Drop Point	DP-1	40° 13.810' N	106° 36.319' W
Drop Point	DP-3	40° 11.576' N	106° 34.849' W
Drop Point	DP-5	40° 09.420' N	106° 34.590' W
Drop Point	DP-7	40° 11.869' N	106° 36.390' W
Drop Point	DP-11	40° 09.510' N	106° 33.042' W
Drop Point	DP-12	40° 09.337' N	106° 31.075' W
Drop Point	DP-41	40° 08.306' N	106° 31.058' W
Drop Point	DP-43	40° 07.327' N	106° 31.937' W
Drop Point	DP-45	40° 08.139' N	106° 31.542' W
Drop Point	DP-47	40° 05.539' N	106° 34.083' W
Drop Point	DP-48	40° 08.721' N	106° 32.898' W
Drop Point	DP-49	40° 09.133' N	106° 34.138' W
Drop Point	DP-70	40° 10.297' N	106° 35.467' W
Drop Point	DP-71	40° 11.455' N	106° 36.003' W
Drop Point	DP-72	40° 11.676' N	106° 36.133' W
Drop Point	DP-73	40° 08.760' N	106° 35.325' W
Drop Point	DP-74	40° 08.231' N	106° 36.228' W
Drop Point	DP-75	40° 10.476' N	106° 36.055' W
Drop Point	DP-90	40° 13.574' N	106° 35.087' W
Helibase	Kremmling	40° 03.205' N	106° 22.138' W
Helispot	H-1	40° 13.810' N	106° 36.293' W
Helispot	H-2	40° 11.261' N	106° 34.648' W
Helispot	H-3	40° 09.490' N	106° 33.049' W
Helispot	H-5	40° 11.380' N	106° 35.890' W
Helispot	H-6	40° 22.999' N	106° 37.230' W
Helispot	H-7	40° 12.670' N	106° 34.099' W
Helispot	H-20	40° 09.423' N	106° 30.744' W
Helispot	H-38	40° 09.163' N	106° 31.552' W
Helispot	H-39	40° 08.128' N	106° 30.915' W
Helispot	H-40	40° 08.914' N	106° 32.266' W
Helispot	H-41	40° 08.311' N	106° 32.328' W
Helispot	H-43	40° 06.658' N	106° 33.922' W
ICP		40° 10.841' N	106° 25.166' W
Mobile Weather Unit		40° 08.313' N	106° 32.233' W
Repeater	CMD7	40° 12.653' N	106° 34.039' W
Repeater	CMD8	40° 04.911' N	106° 31.759' W
Safety Zone		40° 11.372' N	106° 35.890' W
Safety Zone		40° 06.817' N	106° 33.342' W
Safety Zone		40° 13.470' N	106° 35.334' W



- Structures
- Drop Point
- Helispot
- Hot Spot
- Incident Command Post
- Mobile Weather Unit
- Pump
- Repeater
- Safety Zone
- Spot Fire
- Value at Risk
- Division Break
- Completed Line
- Completed Dozer Line
- Completed Hand Line
- Road as Completed Line
- Uncontrolled Fire Edge
- Line Break Completed
- Wildfire Daily Fire Perimeter
- Transmission Powerline
- Distribution Powerline
- Improved Road
- Unimproved Road
- Trail
- Streams
- TFR
- Red Dirt Water Shed
- Wilderness
- Bureau of Land Management
- Private
- State
- State, County, City; Areas
- US Forest Service