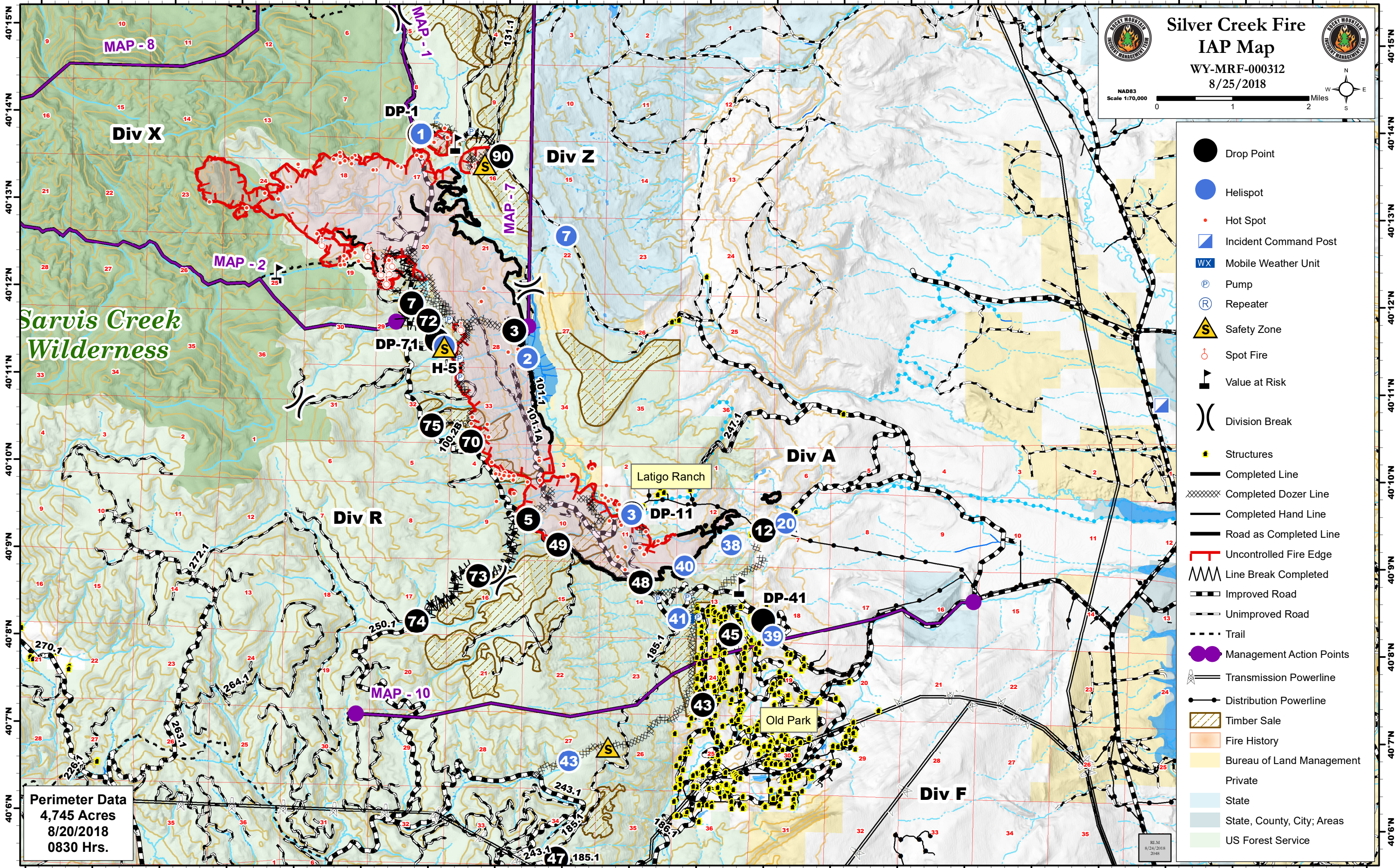


106°42'W 106°41'W 106°40'W 106°39'W 106°38'W 106°37'W 106°36'W 106°35'W 106°34'W 106°33'W 106°32'W 106°31'W 106°30'W 106°29'W 106°28'W 106°27'W 106°26'W 106°25'W 106°24'W 106°23'W



**Silver Creek Fire IAP Map**  
 WY-MRF-000312  
 8/25/2018

NAD83  
 Scale 1:70,000

0 1 2 Miles

- Drop Point
- Helispot
- Hot Spot
- Incident Command Post
- Mobile Weather Unit
- Pump
- Repeater
- Safety Zone
- Spot Fire
- Value at Risk
- Division Break
- Structures
- Completed Line
- Completed Dozer Line
- Completed Hand Line
- Road as Completed Line
- Uncontrolled Fire Edge
- Line Break Completed
- Improved Road
- Unimproved Road
- Trail
- Management Action Points
- Transmission Powerline
- Distribution Powerline
- Timber Sale
- Fire History
- Bureau of Land Management
- Private
- State
- State, County, City; Areas
- US Forest Service

**Perimeter Data**  
 4,745 Acres  
 8/20/2018  
 0830 Hrs.

RLM  
 8/24/2018  
 2048

106°42'W 106°41'W 106°40'W 106°39'W 106°38'W 106°37'W 106°36'W 106°35'W 106°34'W 106°33'W 106°32'W 106°31'W 106°30'W 106°29'W 106°28'W 106°27'W 106°26'W 106°25'W 106°24'W 106°23'W