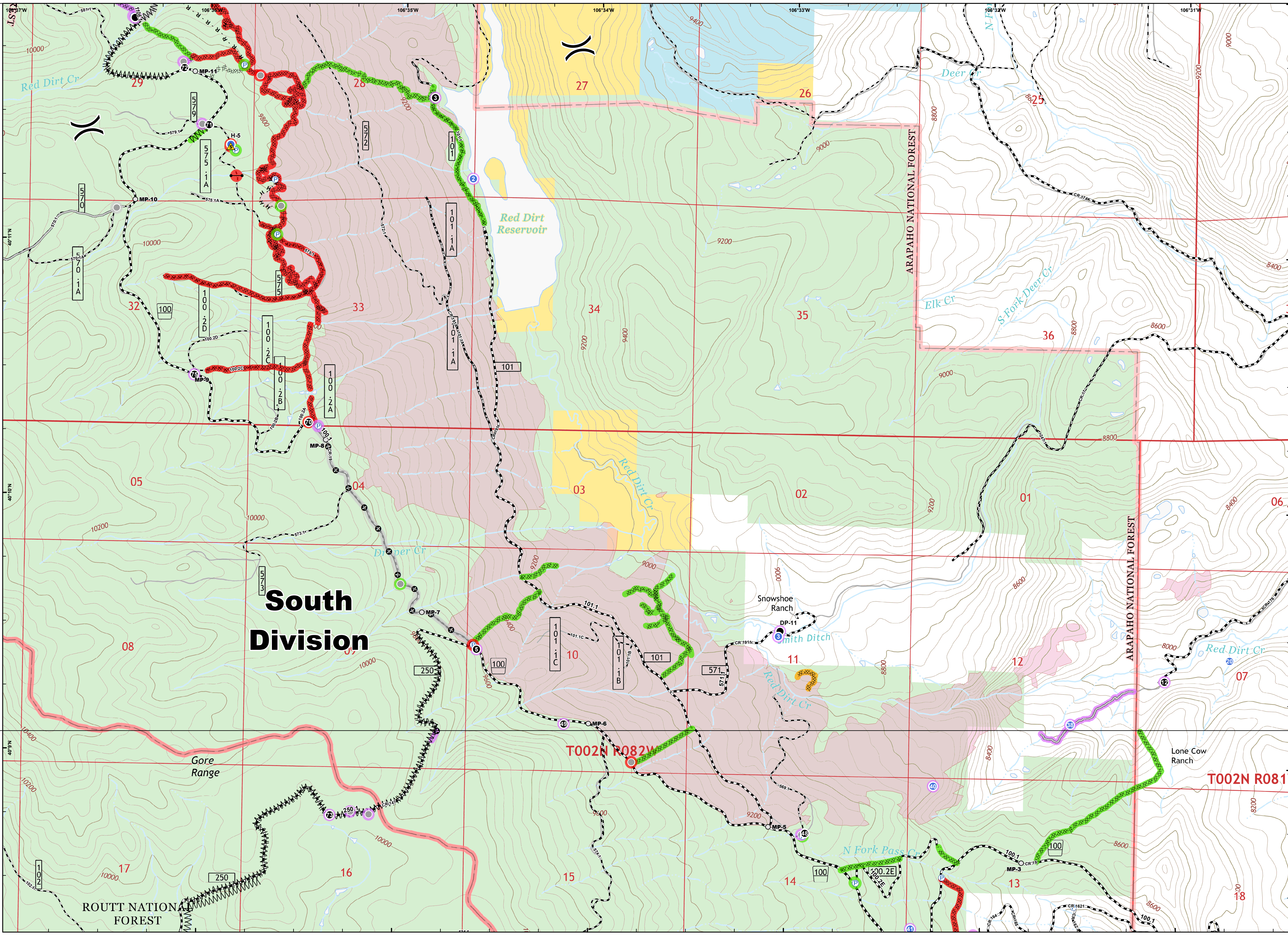




- Drop Point
- Gate
- Helispot
- Ⓟ Pump
- ▲ Safety Zone
- Ⓜ Water Tank
- Other
- ) Division Break
- Repair Status Point**
- Completed - Inspected
- Repair Needed
- Other - See Comments
- Unknown
- ⊗ Completed Dozer Line
- ⋯ Completed Hand Line
- ⋯ Road as Completed Line
- Access or Improved Road
- ⋯ Line Break Completed
- ⊕ Other
- Line Repair Status**
- Completed - Inspected
- Completed - Ready for Inspection
- Repair Needed
- Other - See Comments
- Unknown
- Mileposts NFSR100
- ⋯ Improved Road
- ⋯ Unimproved Road
- ⋯ Trail
- Fire Perimeter
- Wilderness
- Bureau of Land Management
- State
- US Forest Service



**South  
 Division**

Gore Range

T002N R082W

T002N R081W

ROUTT NATIONAL FOREST

ARAPAHO NATIONAL FOREST

ARAPAHO NATIONAL FOREST

