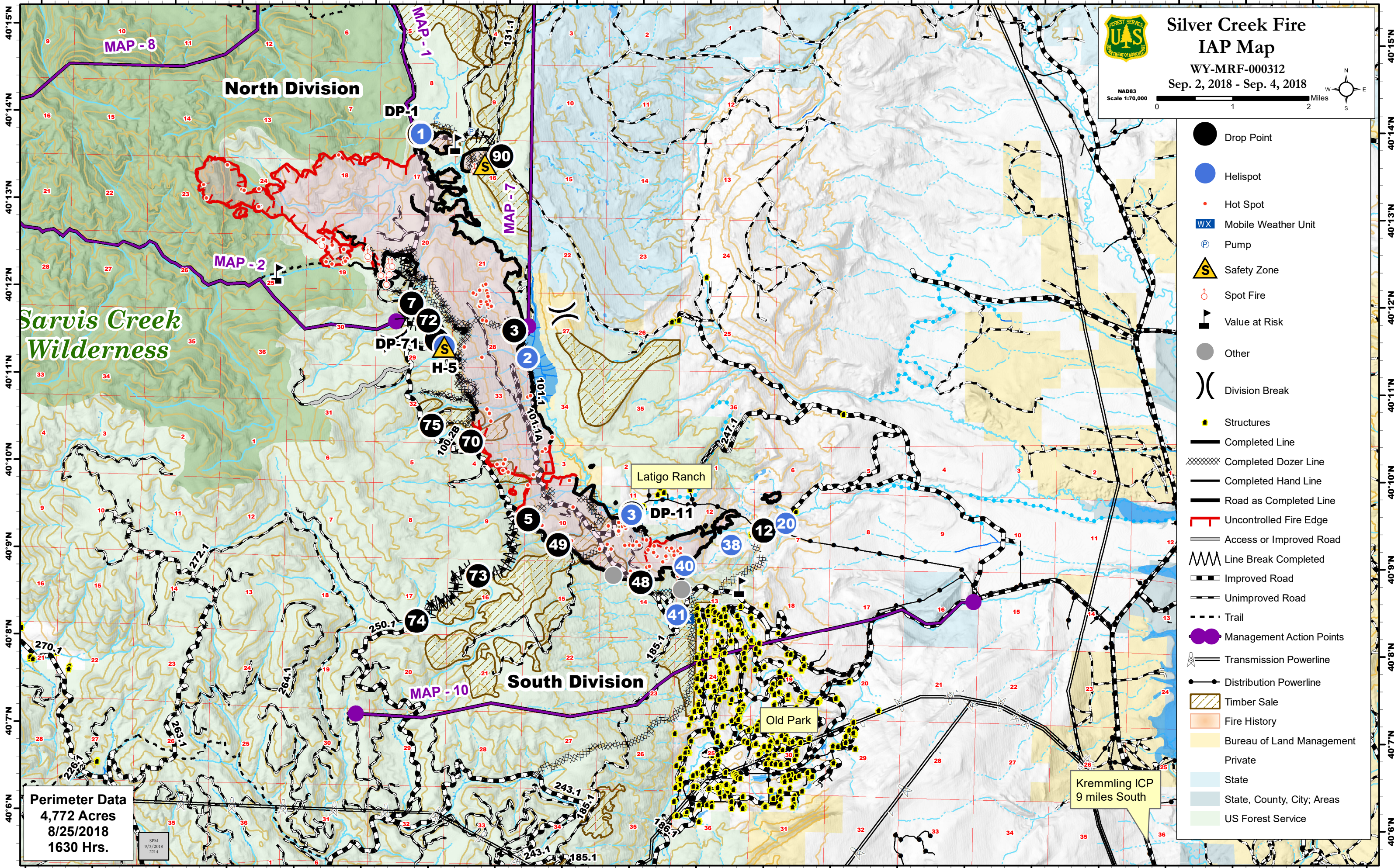


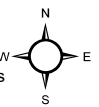
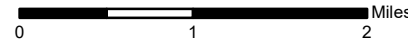
106°42'W 106°41'W 106°40'W 106°39'W 106°38'W 106°37'W 106°36'W 106°35'W 106°34'W 106°33'W 106°32'W 106°31'W 106°30'W 106°29'W 106°28'W 106°27'W 106°26'W 106°25'W 106°24'W 106°23'W



Silver Creek Fire IAP Map

WY-MRF-000312
Sep. 2, 2018 - Sep. 4, 2018

NAD83
Scale 1:70,000



- Drop Point
- Helispot
- Hot Spot
- Mobile Weather Unit
- Pump
- Safety Zone
- Spot Fire
- Value at Risk
- Other
- Division Break
- Structures
- Completed Line
- Completed Dozer Line
- Completed Hand Line
- Road as Completed Line
- Uncontrolled Fire Edge
- Access or Improved Road
- Line Break Completed
- Improved Road
- Unimproved Road
- Trail
- Management Action Points
- Transmission Powerline
- Distribution Powerline
- Timber Sale
- Fire History
- Bureau of Land Management
- Private
- State
- State, County, City, Areas
- US Forest Service

Perimeter Data
4,772 Acres
8/25/2018
1630 Hrs.

SPM
9/3/2018
2214

Kremmling ICP
9 miles South

106°42'W 106°41'W 106°40'W 106°39'W 106°38'W 106°37'W 106°36'W 106°35'W 106°34'W 106°33'W 106°32'W 106°31'W 106°30'W 106°29'W 106°28'W 106°27'W 106°26'W 106°25'W 106°24'W 106°23'W 106°22'W