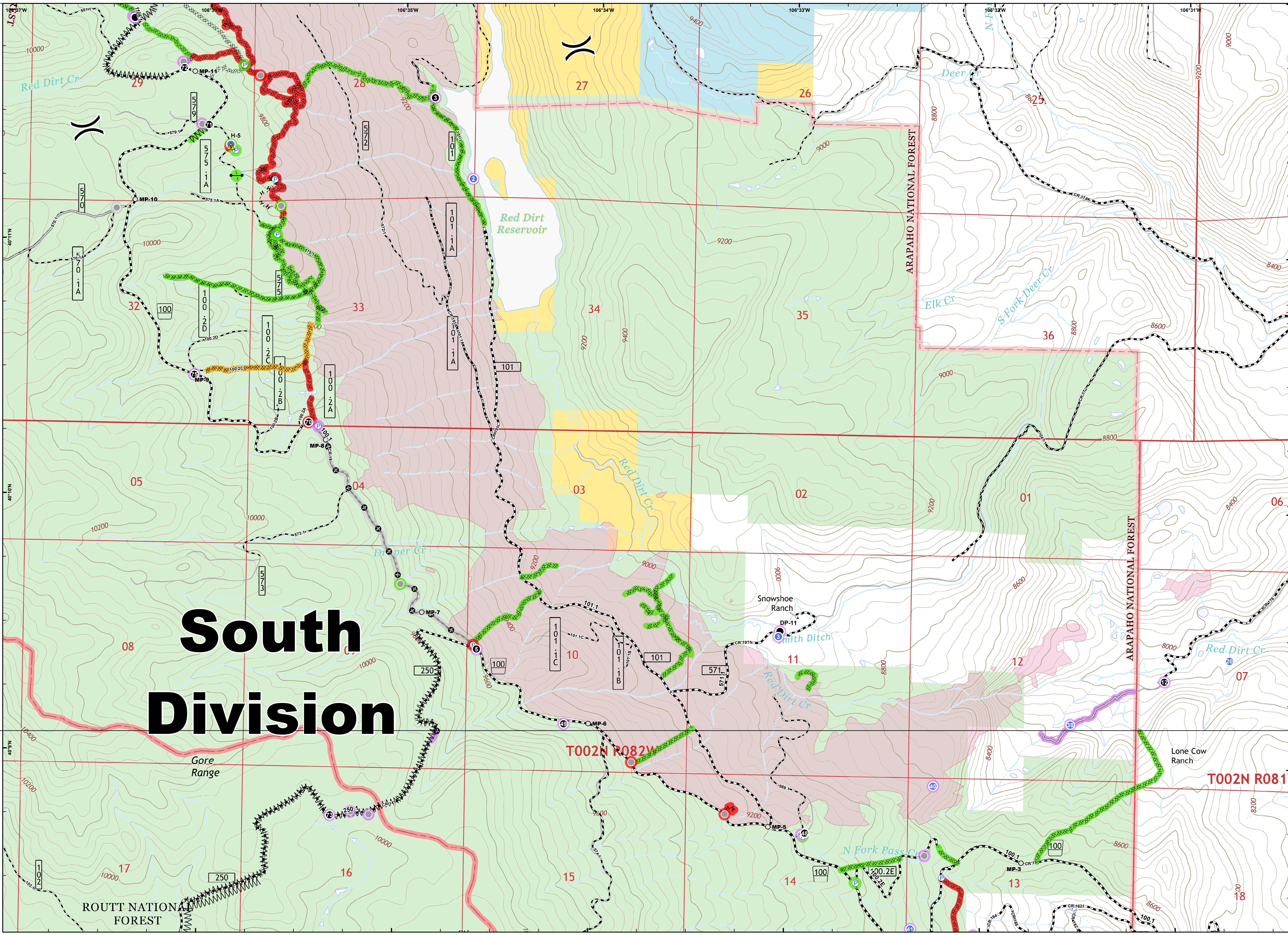




- Drop Point
 - Gate
 - Helispot
 - Ⓟ Pump
 - ▲ Safety Zone
 - Ⓜ Water Tank
 - Other
 - ⌘ Division Break
- Repair Status Point**
- Completed - Inspected
 - Repair Needed
 - Other - See Comments
 - Unknown

- ⊗ Completed Dozer Line
- ⋯ Completed Hand Line
- Access or Improved Road
- ⋯⋯ Line Break Completed
- ⊕ Other

- Line Repair Status**
- Completed - Inspected
 - Completed - Ready for Inspection
 - Repair Needed
 - Other - See Comments
 - Unknown
- Mileposts NFSR100
 - ⋯ Improved Road
 - ⋯ Unimproved Road
 - ⋯ Trail
 - ▭ Fire Perimeter
 - ▭ Wilderness
 - ▭ Bureau of Land Management
 - ▭ State
 - ▭ US Forest Service



South Division

