

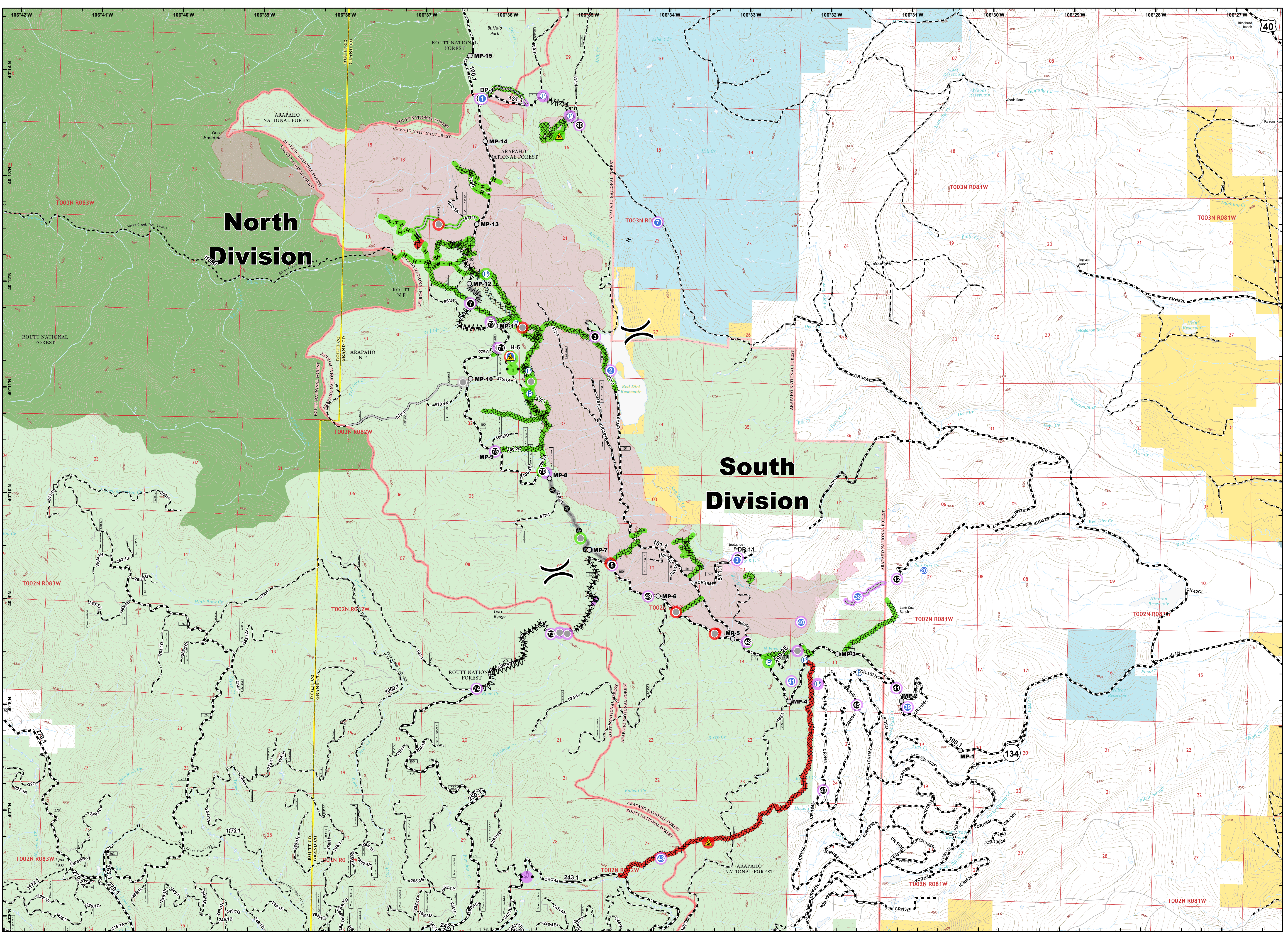
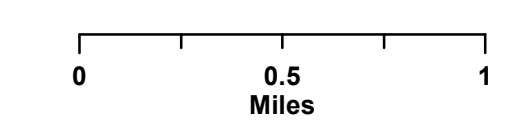


**Silver Creek Fire**  
 WY-MRF-000312  
 Suppression Repair

Map  
 9/8/2018

5,008 acres as of 10/30 9/4/2018

- Drop Point
- Gate
- Helipoint
- Ⓟ Pump
- ▲ Safety Zone
- Ⓜ Water Tank
- Other
- ⌋ Division Break
- Repair Status Point**
- Completed - Inspected
- Repair Needed
- Other - See Comments
- Unknown
- ⊘ Completed Dozer Line
- ⊘ Completed Hand Line
- ⊘ Road as Completed Line
- ⊘ Access or Improved Road
- ⊘ Line Break Completed
- ⊘ Other
- Line Repair Status**
- Completed - Inspected
- Repair Needed
- Other - See Comments
- Unknown
- Mileposts NFSR100
- ⊘ Improved Road
- ⊘ Unimproved Road
- ⊘ Trail
- ▭ Fire Perimeter
- ▭ Wilderness
- ▭ Bureau of Land Management
- ▭ State
- ▭ State, County, City, Areas
- ▭ US Forest Service



**North  
 Division**

**South  
 Division**