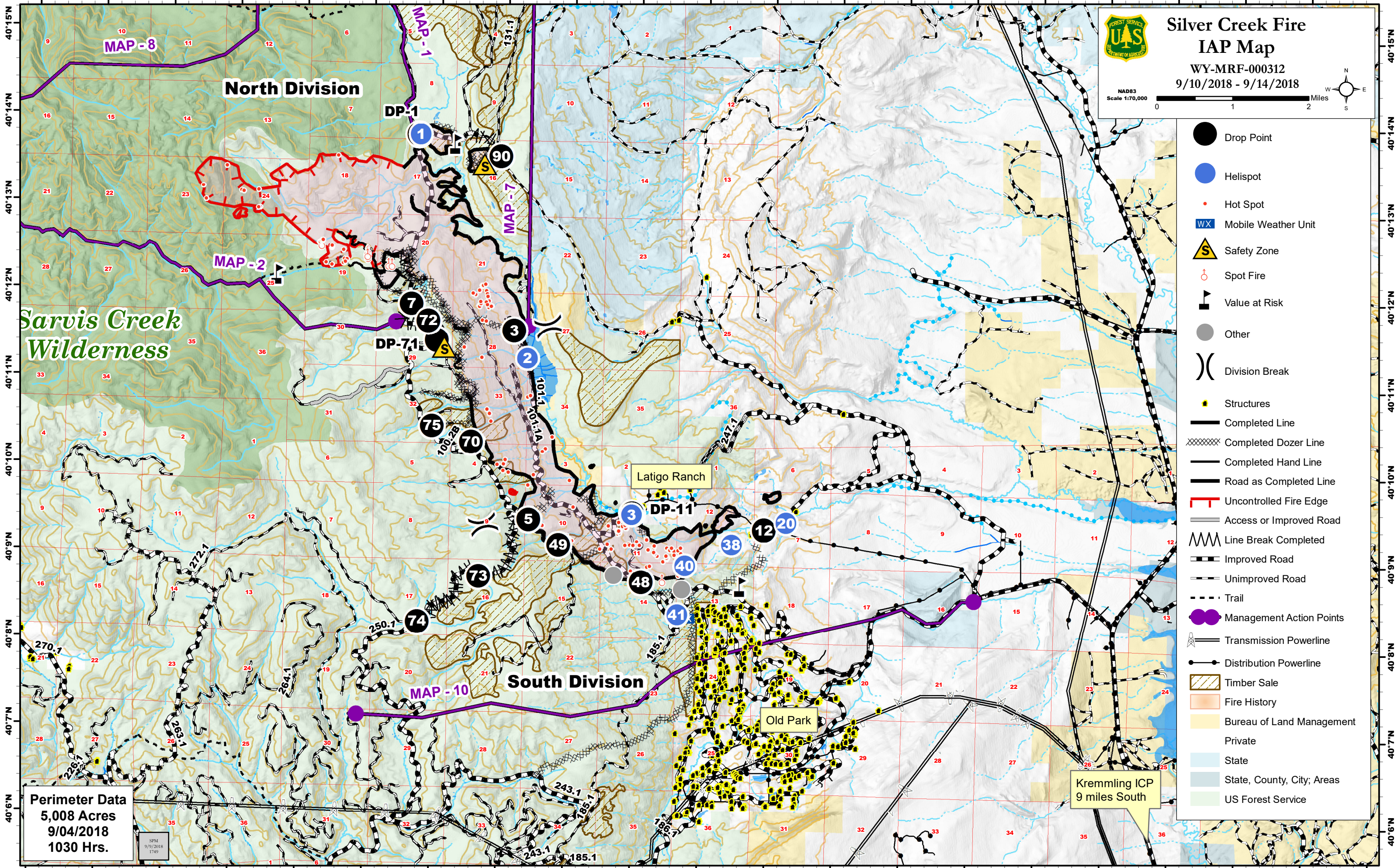
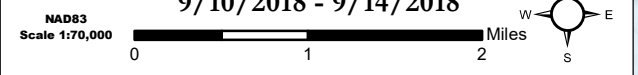


106°42'W 106°41'W 106°40'W 106°39'W 106°38'W 106°37'W 106°36'W 106°35'W 106°34'W 106°33'W 106°32'W 106°31'W 106°30'W 106°29'W 106°28'W 106°27'W 106°26'W 106°25'W 106°24'W 106°23'W



# Silver Creek Fire IAP Map

WY-MRF-000312  
9/10/2018 - 9/14/2018



- Drop Point
- Helispot
- Hot Spot
- Mobile Weather Unit
- Safety Zone
- Spot Fire
- Value at Risk
- Other
- Division Break
- Structures
- Completed Line
- Completed Dozer Line
- Completed Hand Line
- Road as Completed Line
- Uncontrolled Fire Edge
- Access or Improved Road
- Line Break Completed
- Improved Road
- Unimproved Road
- Trail
- Management Action Points
- Transmission Powerline
- Distribution Powerline
- Timber Sale
- Fire History
- Bureau of Land Management
- Private
- State
- State, County, City, Areas
- US Forest Service

**Perimeter Data**  
 5,008 Acres  
 9/04/2018  
 1030 Hrs.

SPM  
 9/9/2018  
 1749

Kremmling ICP  
 9 miles South

106°42'W 106°41'W 106°40'W 106°39'W 106°38'W 106°37'W 106°36'W 106°35'W 106°34'W 106°33'W 106°32'W 106°31'W 106°30'W 106°29'W 106°28'W 106°27'W 106°26'W 106°25'W 106°24'W 106°23'W