

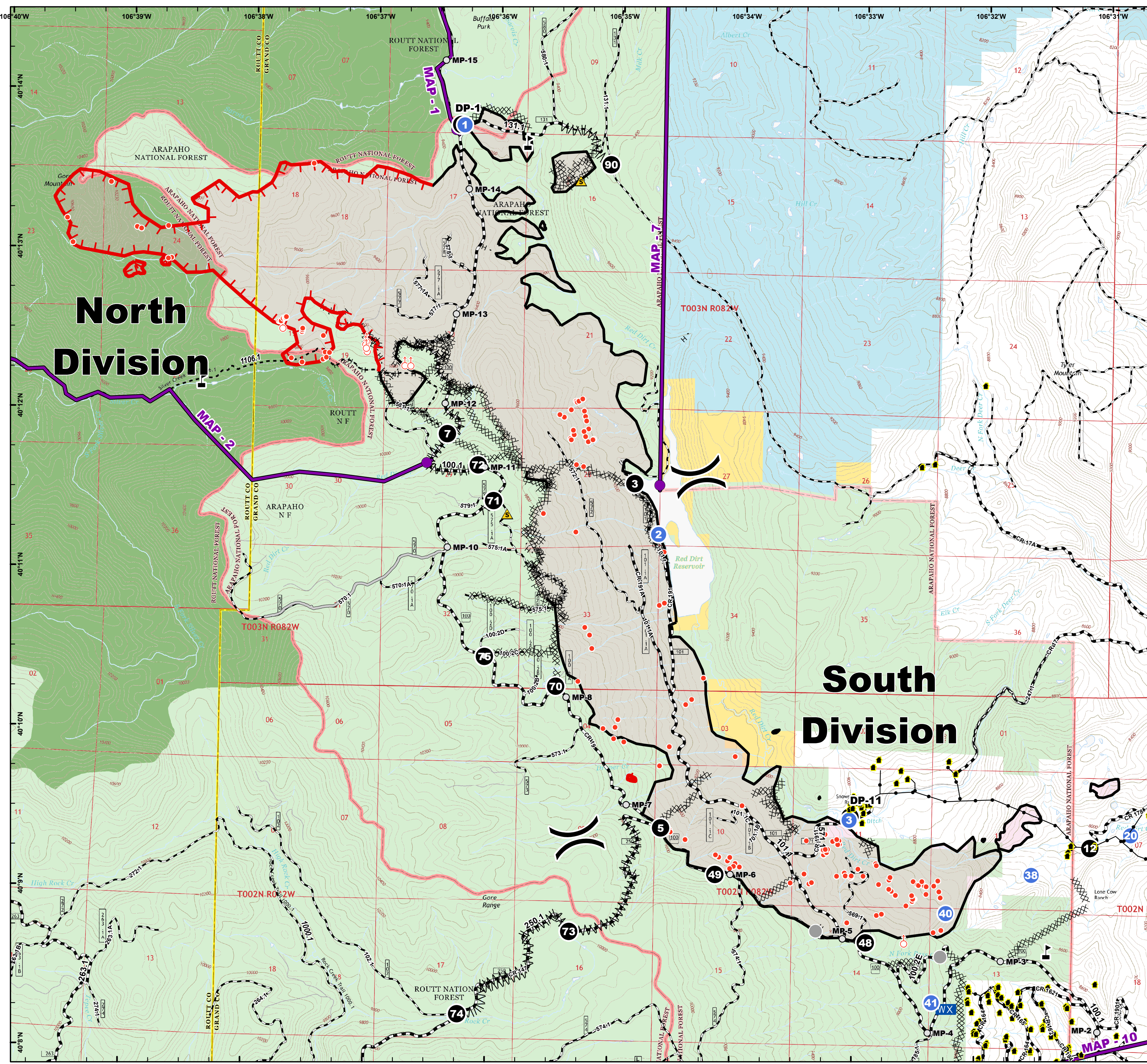
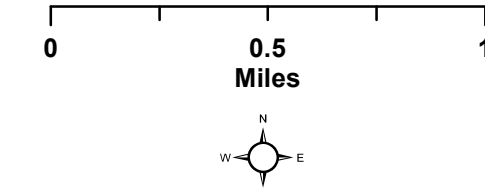


Silver Creek Fire
WY-MRF-000312
Operations Map

9/10/2018 - 9/14/2018

5,008 acres as of 1030 9/4/208

- Drop Point
- Helispot
- Hot Spot
- WX Mobile Weather Unit
- ▲ Safety Zone
- Spot Fire
- ⚠ Value at Risk
- Other
-) Division Break
- 🏠 Structures
- 🔴 Uncontrolled Fire Edge
- Completed Line
- ⊗ Completed Dozer Line
- H · H · Completed Hand Line
- R · R · Road as Completed Line
- Access or Improved Road
- MMM Line Break Completed
- MAP
- Mileposts NFSR100
- Improved Road
- Unimproved Road
- ⋯ Trail
- Distribution Powerline
- 🔴 Fire Perimeter
- 🟡 Timber Sale
- 🟢 Wilderness
- 🟡 Bureau of Land Management
- 🟦 State
- 🟩 US Forest Service



**North
Division**

**South
Division**