

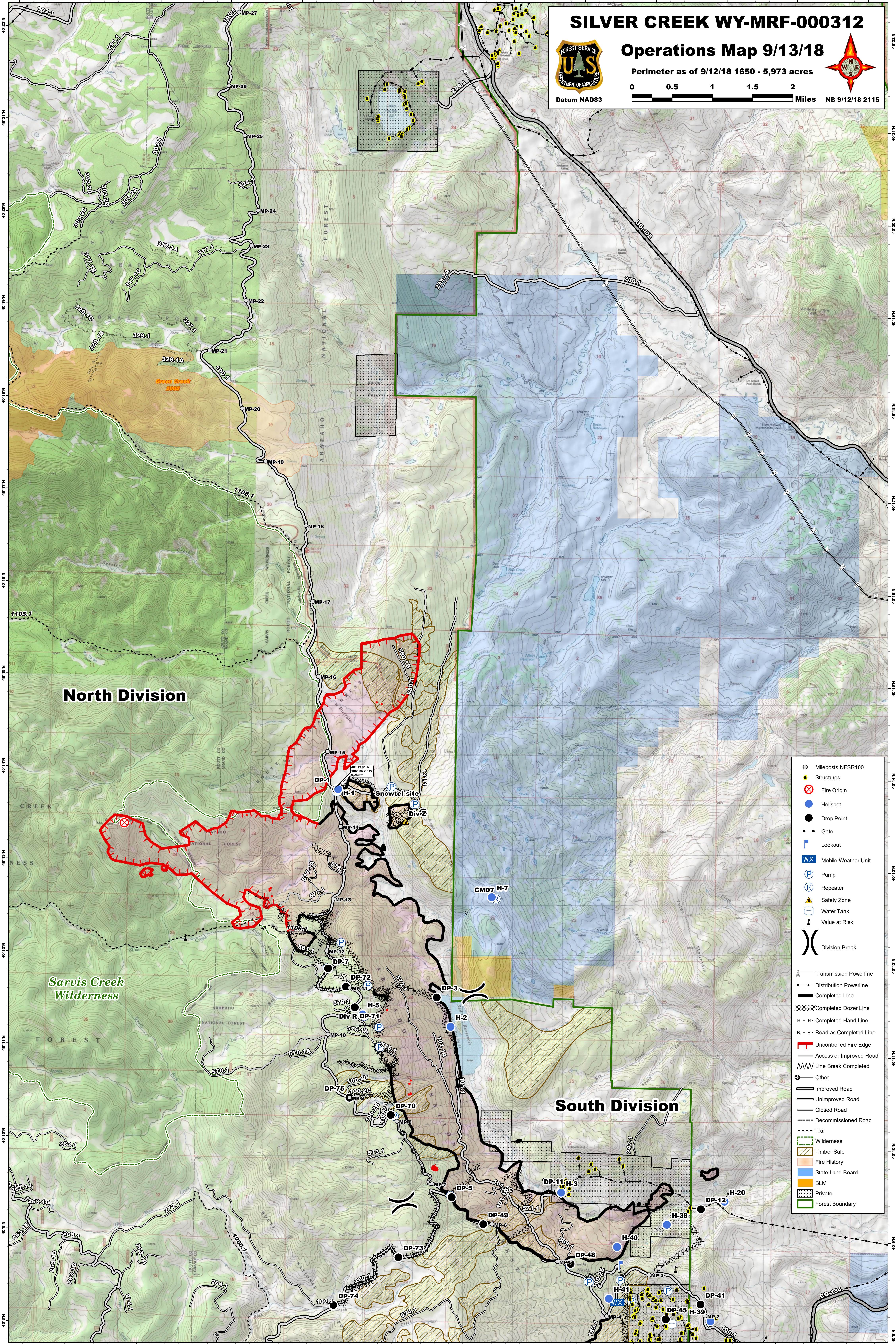
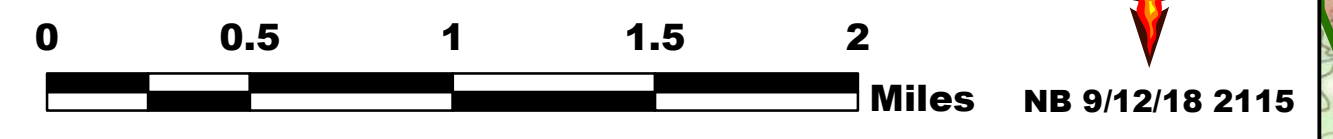
SILVER CREEK WY-MRF-000312

Operations Map 9/13/18

Perimeter as of 9/12/18 1650 - 5,973 acres



Datum NAD83



North Division

South Division

Sarvis Creek Wilderness

- Mileposts NFSR100
- Structures
- ⊗ Fire Origin
- Helispot
- Drop Point
- Gate
- ⊥ Lookout
- WX Mobile Weather Unit
- P Pump
- R Repeater
- ▲ Safety Zone
- ⊕ Water Tank
- ⊖ Value at Risk
- () Division Break
- Transmission Powerline
- Distribution Powerline
- Completed Line
- XXXXX Completed Dozer Line
- H - H - Completed Hand Line
- R - R - Road as Completed Line
- Uncontrolled Fire Edge
- Access or Improved Road
- Line Break Completed
- Other
- Improved Road
- Unimproved Road
- Closed Road
- Decommissioned Road
- Trail
- Wilderness
- Timber Sale
- Fire History
- State Land Board
- BLM
- Private
- Forest Boundary