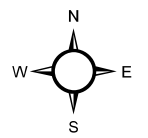




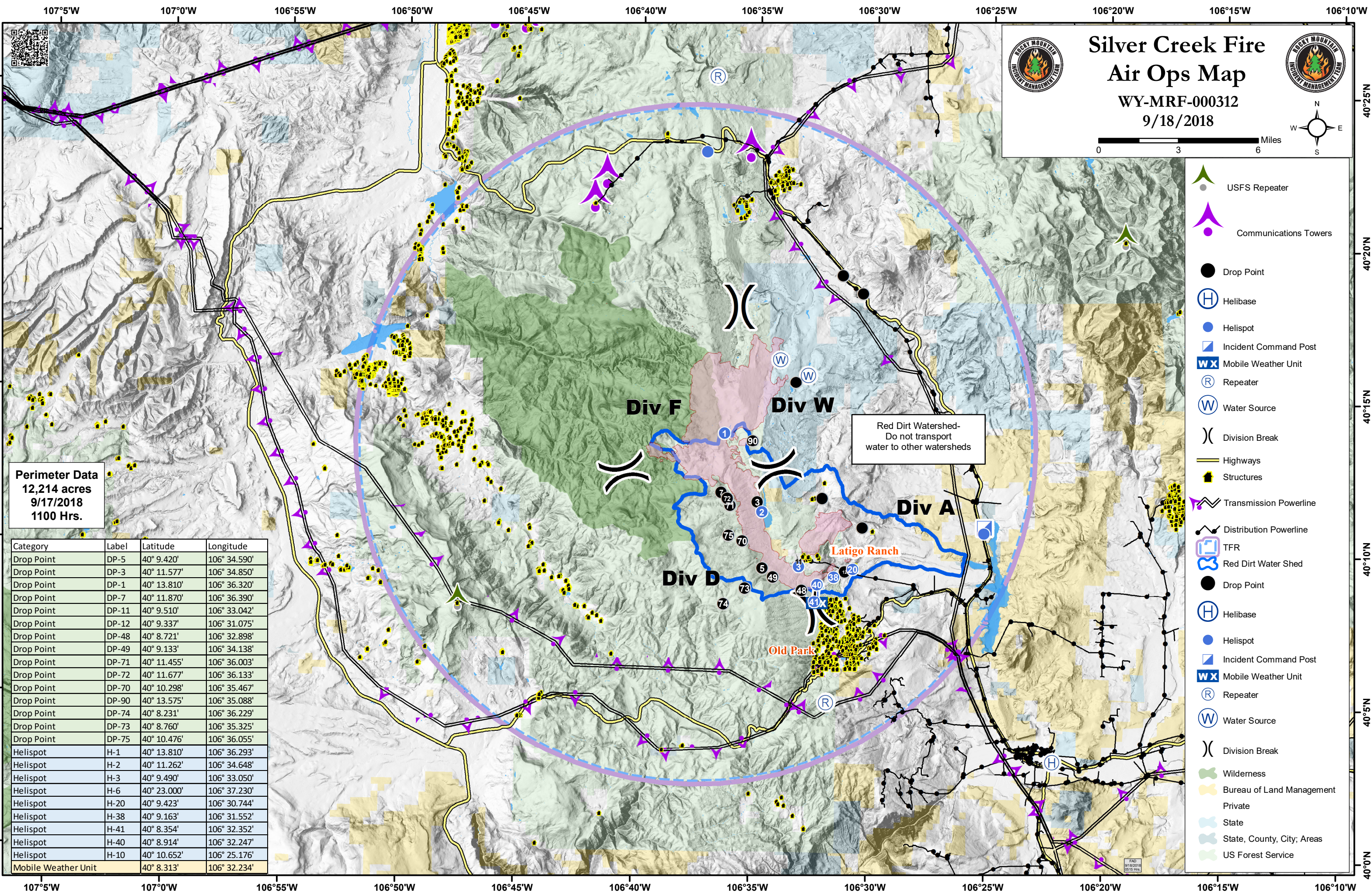
Silver Creek Fire

Air Ops Map

WY-MRF-000312
9/18/2018



0 3 6 Miles



Perimeter Data
12,214 acres
9/17/2018
1100 Hrs.

Category	Label	Latitude	Longitude
Drop Point	DP-5	40° 9.420'	106° 34.590'
Drop Point	DP-3	40° 11.577'	106° 34.850'
Drop Point	DP-1	40° 13.810'	106° 36.320'
Drop Point	DP-7	40° 11.870'	106° 36.390'
Drop Point	DP-11	40° 9.510'	106° 33.042'
Drop Point	DP-12	40° 9.337'	106° 31.075'
Drop Point	DP-48	40° 8.721'	106° 32.898'
Drop Point	DP-49	40° 9.133'	106° 34.138'
Drop Point	DP-71	40° 11.455'	106° 36.003'
Drop Point	DP-72	40° 11.677'	106° 36.133'
Drop Point	DP-70	40° 10.298'	106° 35.467'
Drop Point	DP-90	40° 13.575'	106° 35.088'
Drop Point	DP-74	40° 8.231'	106° 36.229'
Drop Point	DP-73	40° 8.760'	106° 35.325'
Drop Point	DP-75	40° 10.476'	106° 36.055'
Helispot	H-1	40° 13.810'	106° 36.293'
Helispot	H-2	40° 11.262'	106° 34.648'
Helispot	H-3	40° 9.490'	106° 33.050'
Helispot	H-6	40° 23.000'	106° 37.230'
Helispot	H-20	40° 9.423'	106° 30.744'
Helispot	H-38	40° 9.163'	106° 31.552'
Helispot	H-41	40° 8.354'	106° 32.352'
Helispot	H-40	40° 8.914'	106° 32.247'
Helispot	H-10	40° 10.652'	106° 25.176'
Mobile Weather Unit		40° 8.313'	106° 32.234'

Red Dirt Watershed-
Do not transport
water to other watersheds

Latigo Ranch

Old Park

- USFS Repeater
- Communications Towers
- Drop Point
- Helibase
- Helispot
- Incident Command Post
- Mobile Weather Unit
- Repeater
- Water Source
- Division Break
- Highways
- Structures
- Transmission Powerline
- Distribution Powerline
- TFR
- Red Dirt Water Shed
- Drop Point
- Helibase
- Helispot
- Incident Command Post
- Mobile Weather Unit
- Repeater
- Water Source
- Division Break
- Wilderness
- Bureau of Land Management
- Private
- State
- State, County, City, Areas
- US Forest Service