

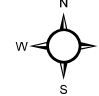
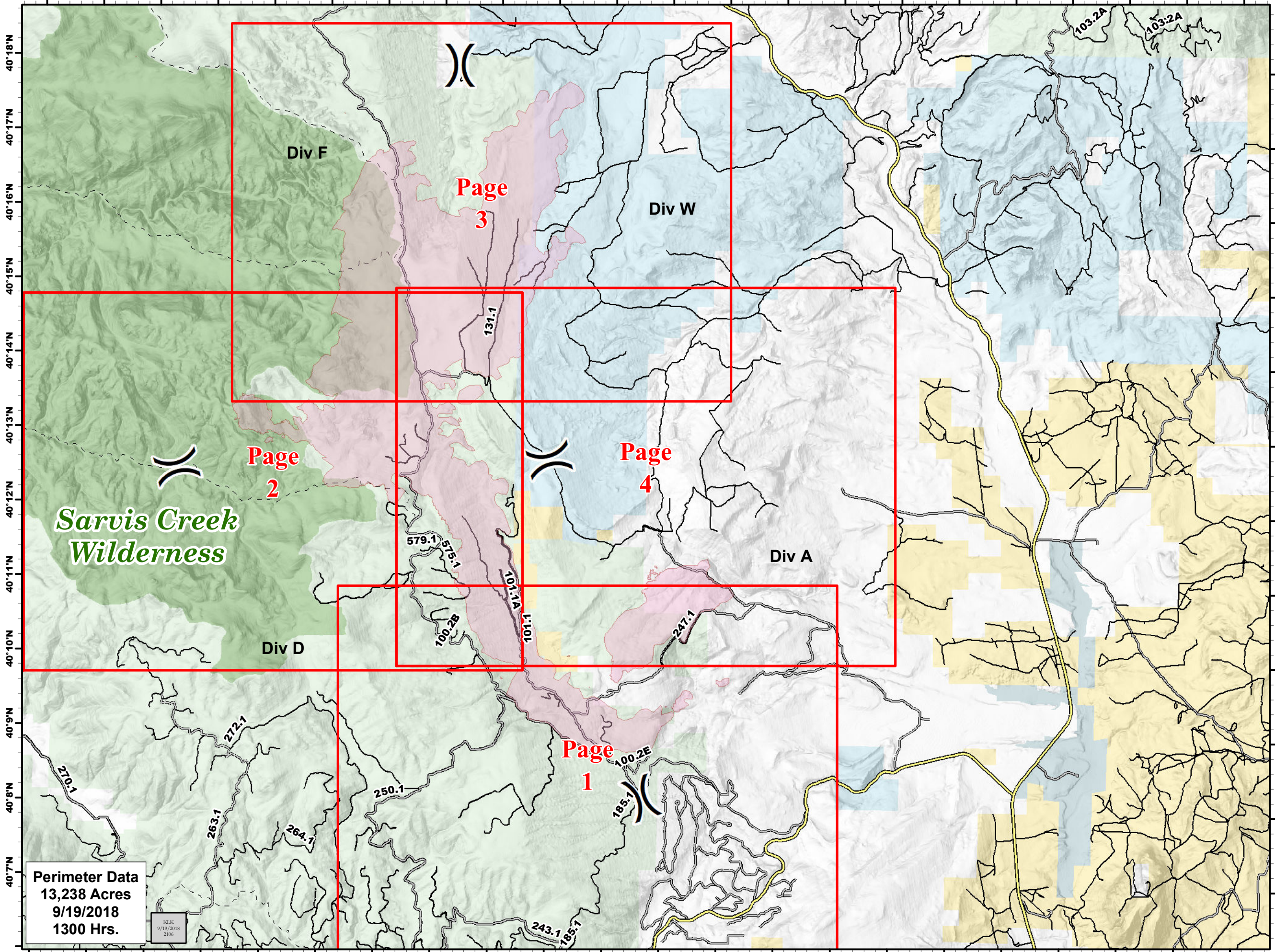


106°43'W 106°42'W 106°41'W 106°40'W 106°39'W 106°38'W 106°37'W 106°36'W 106°35'W 106°34'W 106°33'W 106°32'W 106°31'W 106°30'W 106°29'W 106°28'W 106°27'W 106°26'W 106°25'W 106°24'W 106°23'W 106°22'W



**Silver Creek Fire
IAP Index Map**
WY-MRF-000312
9/20/2018

NAD83




 Division Break
 Wildfire Daily Fire Perimeter
 Highways
 Improved Road
 Unimproved Road
 Trail
 Bureau of Land Management
 Private
 State
 State, County, City; Areas
 US Forest Service

Perimeter Data
13,238 Acres
9/19/2018
1300 Hrs.

KLK
9/19/2018
2106

106°43'W 106°42'W 106°41'W 106°40'W 106°39'W 106°38'W 106°37'W 106°36'W 106°35'W 106°34'W 106°33'W 106°32'W 106°31'W 106°30'W 106°29'W 106°28'W 106°27'W 106°26'W 106°25'W 106°24'W 106°23'W 106°22'W