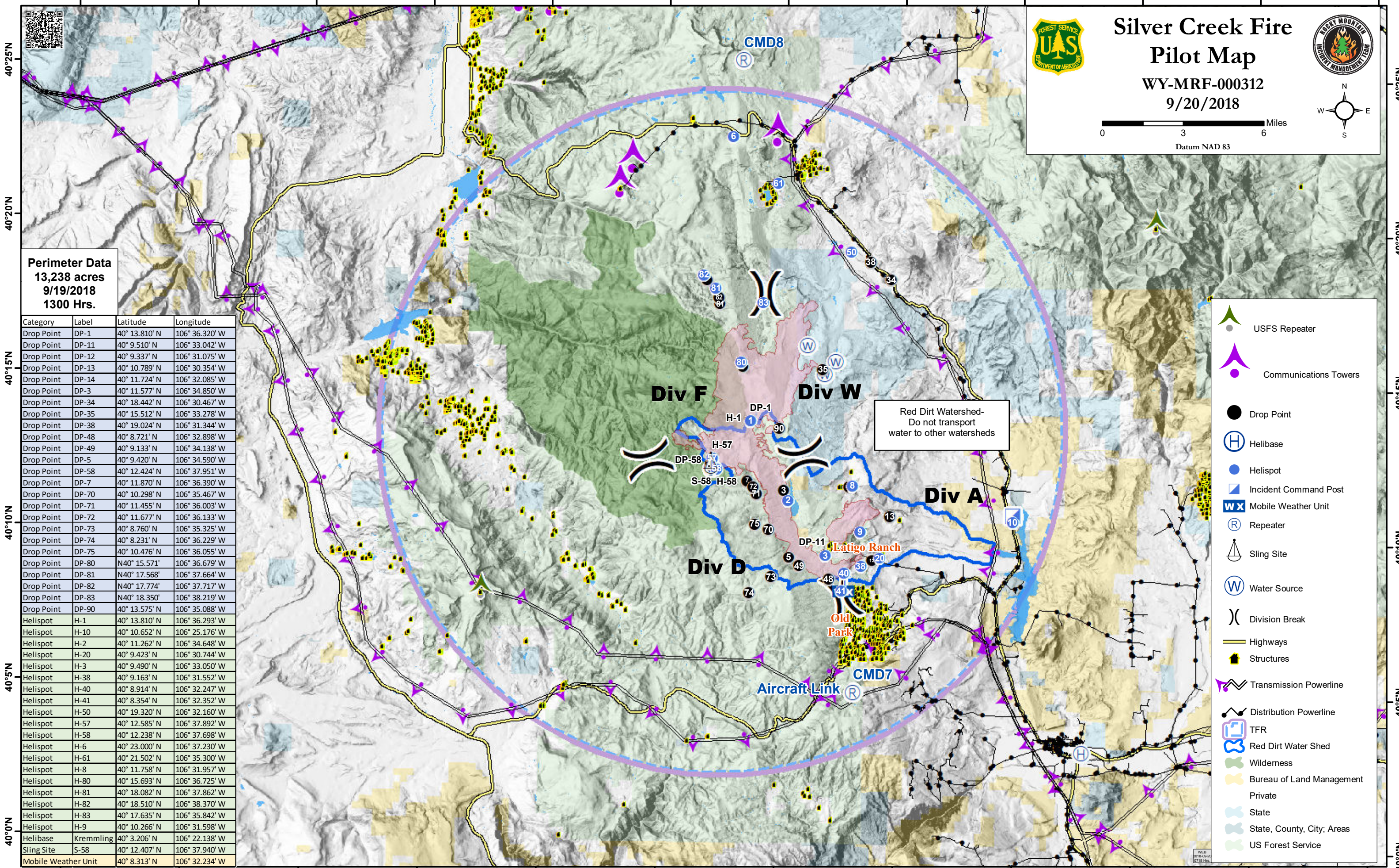
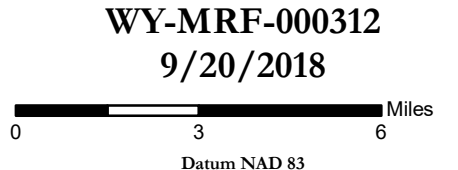


107°5'W 107°0'W 106°55'W 106°50'W 106°45'W 106°40'W 106°35'W 106°30'W 106°25'W 106°20'W 106°15'W 106°10'W



Silver Creek Fire Pilot Map

WY-MRF-000312
9/20/2018



Perimeter Data
13,238 acres
9/19/2018
1300 Hrs.

Category	Label	Latitude	Longitude
Drop Point	DP-1	40° 13.810' N	106° 36.320' W
Drop Point	DP-11	40° 9.510' N	106° 33.042' W
Drop Point	DP-12	40° 9.337' N	106° 31.075' W
Drop Point	DP-13	40° 10.789' N	106° 30.354' W
Drop Point	DP-14	40° 11.724' N	106° 32.085' W
Drop Point	DP-3	40° 11.577' N	106° 34.850' W
Drop Point	DP-34	40° 18.442' N	106° 30.467' W
Drop Point	DP-35	40° 15.512' N	106° 33.278' W
Drop Point	DP-38	40° 19.024' N	106° 31.344' W
Drop Point	DP-48	40° 8.721' N	106° 32.898' W
Drop Point	DP-49	40° 9.133' N	106° 34.138' W
Drop Point	DP-5	40° 9.420' N	106° 34.590' W
Drop Point	DP-58	40° 12.424' N	106° 37.951' W
Drop Point	DP-7	40° 11.870' N	106° 36.390' W
Drop Point	DP-70	40° 10.298' N	106° 35.467' W
Drop Point	DP-71	40° 11.455' N	106° 36.003' W
Drop Point	DP-72	40° 11.677' N	106° 36.133' W
Drop Point	DP-73	40° 8.760' N	106° 35.325' W
Drop Point	DP-74	40° 8.231' N	106° 36.229' W
Drop Point	DP-75	40° 10.476' N	106° 36.055' W
Drop Point	DP-80	N40° 15.571'	106° 36.679' W
Drop Point	DP-81	N40° 17.568'	106° 37.664' W
Drop Point	DP-82	N40° 17.774'	106° 37.717' W
Drop Point	DP-83	N40° 18.350'	106° 38.219' W
Drop Point	DP-90	40° 13.575' N	106° 35.088' W
Helispot	H-1	40° 13.810' N	106° 36.293' W
Helispot	H-10	40° 10.652' N	106° 25.176' W
Helispot	H-2	40° 11.262' N	106° 34.648' W
Helispot	H-20	40° 9.423' N	106° 30.744' W
Helispot	H-3	40° 9.490' N	106° 33.050' W
Helispot	H-38	40° 9.163' N	106° 31.552' W
Helispot	H-40	40° 8.914' N	106° 32.247' W
Helispot	H-41	40° 8.354' N	106° 32.352' W
Helispot	H-50	40° 19.320' N	106° 32.160' W
Helispot	H-57	40° 12.585' N	106° 37.892' W
Helispot	H-58	40° 12.238' N	106° 37.698' W
Helispot	H-6	40° 23.000' N	106° 37.230' W
Helispot	H-61	40° 21.502' N	106° 35.300' W
Helispot	H-8	40° 11.758' N	106° 31.957' W
Helispot	H-80	40° 15.693' N	106° 36.725' W
Helispot	H-81	40° 18.082' N	106° 37.862' W
Helispot	H-82	40° 18.510' N	106° 38.370' W
Helispot	H-83	40° 17.635' N	106° 35.842' W
Helispot	H-9	40° 10.266' N	106° 31.598' W
Helibase	Kremmling	40° 3.206' N	106° 22.138' W
Sling Site	S-58	40° 12.407' N	106° 37.940' W
Mobile Weather Unit		40° 8.313' N	106° 32.234' W

Red Dirt Watershed-
Do not transport
water to other watersheds

- USFS Repeater
- Communications Towers
- Drop Point
- Helibase
- Helispot
- Incident Command Post
- Mobile Weather Unit
- Repeater
- Sling Site
- Water Source
- Division Break
- Highways
- Structures
- Transmission Powerline
- Distribution Powerline
- TFR
- Red Dirt Water Shed
- Wilderness
- Bureau of Land Management
- Private
- State
- State, County, City, Areas
- US Forest Service

107°5'W 107°0'W 106°55'W 106°50'W 106°45'W 106°40'W 106°35'W 106°30'W 106°25'W 106°20'W 106°15'W 106°10'W