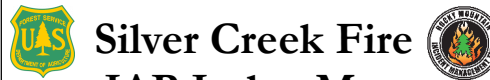



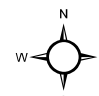
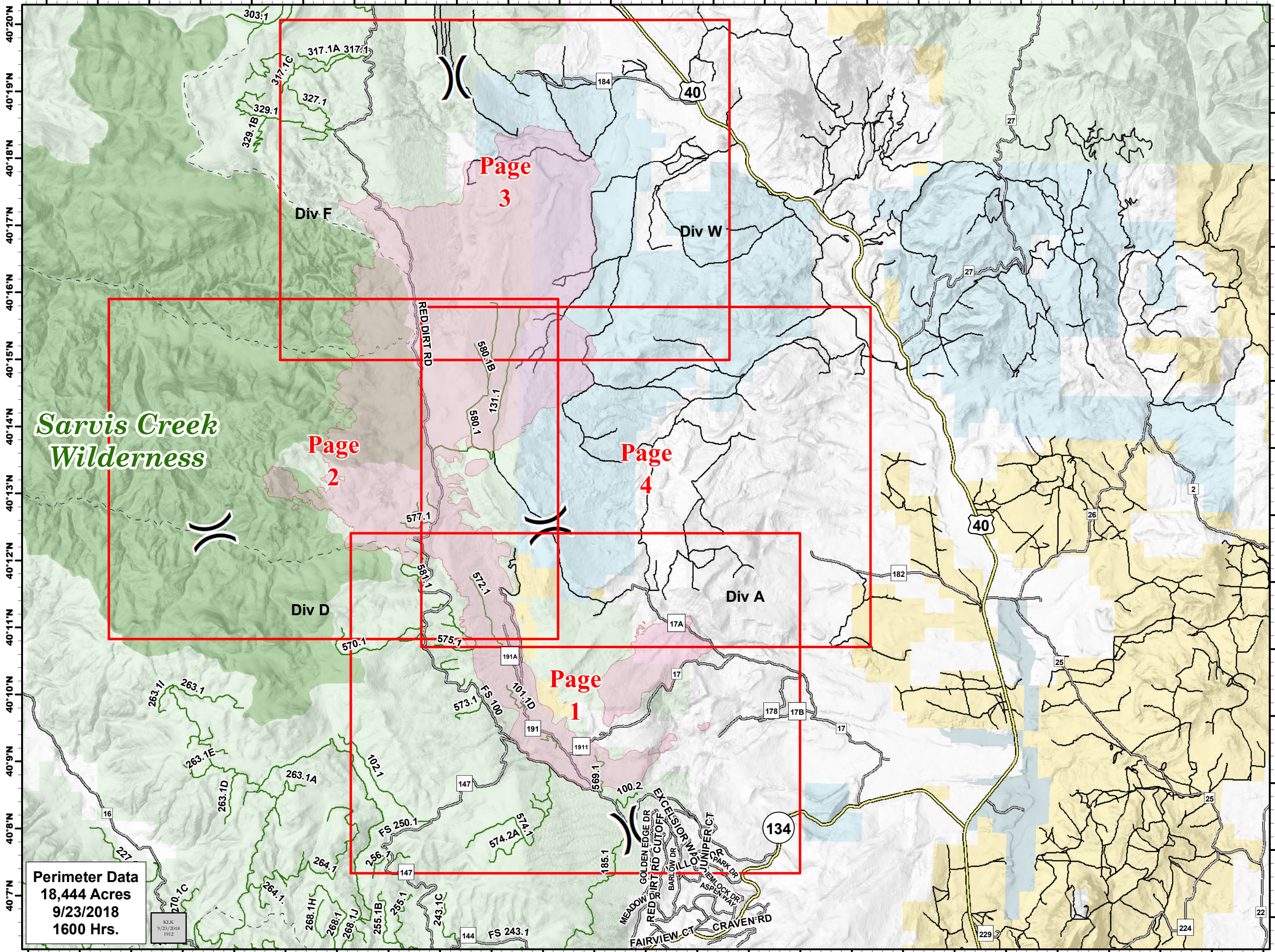

106°44'W 106°43'W 106°42'W 106°41'W 106°40'W 106°39'W 106°38'W 106°37'W 106°36'W 106°35'W 106°34'W 106°33'W 106°32'W 106°31'W 106°30'W 106°29'W 106°28'W 106°27'W 106°26'W 106°25'W 106°24'W 106°23'W 106°22'W 106°21'W



**Silver Creek Fire
IAP Index Map**

WY-MRF-000312
9/24/2018

NAD83


Division Break



Wildfire Daily Fire Perimeter



Highways




County Roads



Unknown/Private Route



USFS Route



Trail



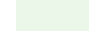
Bureau of Land Management



Private



State



State, County, City; Areas



US Forest Service

Perimeter Data
18,444 Acres
9/23/2018
1600 Hrs.

106°44'W 106°43'W 106°42'W 106°41'W 106°40'W 106°39'W 106°38'W 106°37'W 106°36'W 106°35'W 106°34'W 106°33'W 106°32'W 106°31'W 106°30'W 106°29'W 106°28'W 106°27'W 106°26'W 106°25'W 106°24'W 106°23'W 106°22'W 106°21'W