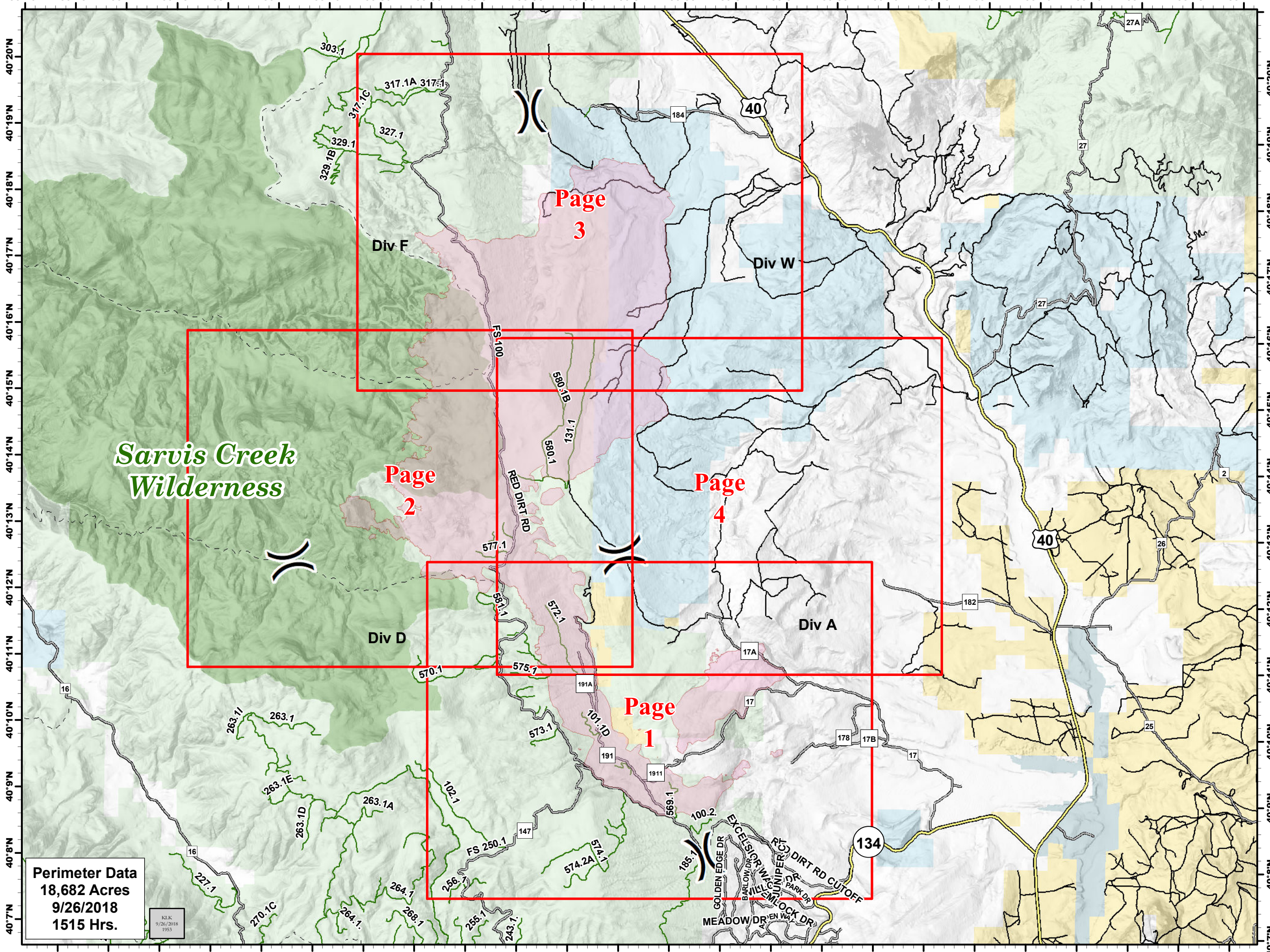


106°46'W 106°45'W 106°44'W 106°43'W 106°42'W 106°41'W 106°40'W 106°39'W 106°38'W 106°37'W 106°36'W 106°35'W 106°34'W 106°33'W 106°32'W 106°31'W 106°30'W 106°29'W 106°28'W 106°27'W 106°26'W 106°25'W 106°24'W 106°23'W 106°22'W



**Silver Creek Fire IAP Index Map**  
 WY-MRF-000312  
 9/27/2018

NAD83

0 1 2 Miles

**( )** Division Break

Wildfire Daily Fire Perimeter

Highways

County Roads

Unknown/Private Route

USFS Route

Trail

Bureau of Land Management

Private

State

State, County, City; Areas

US Forest Service

**Perimeter Data**  
 18,682 Acres  
 9/26/2018  
 1515 Hrs.

KLJK  
 9/26/2018  
 1953

106°45'W 106°44'W 106°43'W 106°42'W 106°41'W 106°40'W 106°39'W 106°38'W 106°37'W 106°36'W 106°35'W 106°34'W 106°33'W 106°32'W 106°31'W 106°30'W 106°29'W 106°28'W 106°27'W 106°26'W 106°25'W 106°24'W 106°23'W 106°22'W