

Silver Creek Fire
IAP Map
 WY-MRF-000312
 9/27/2018

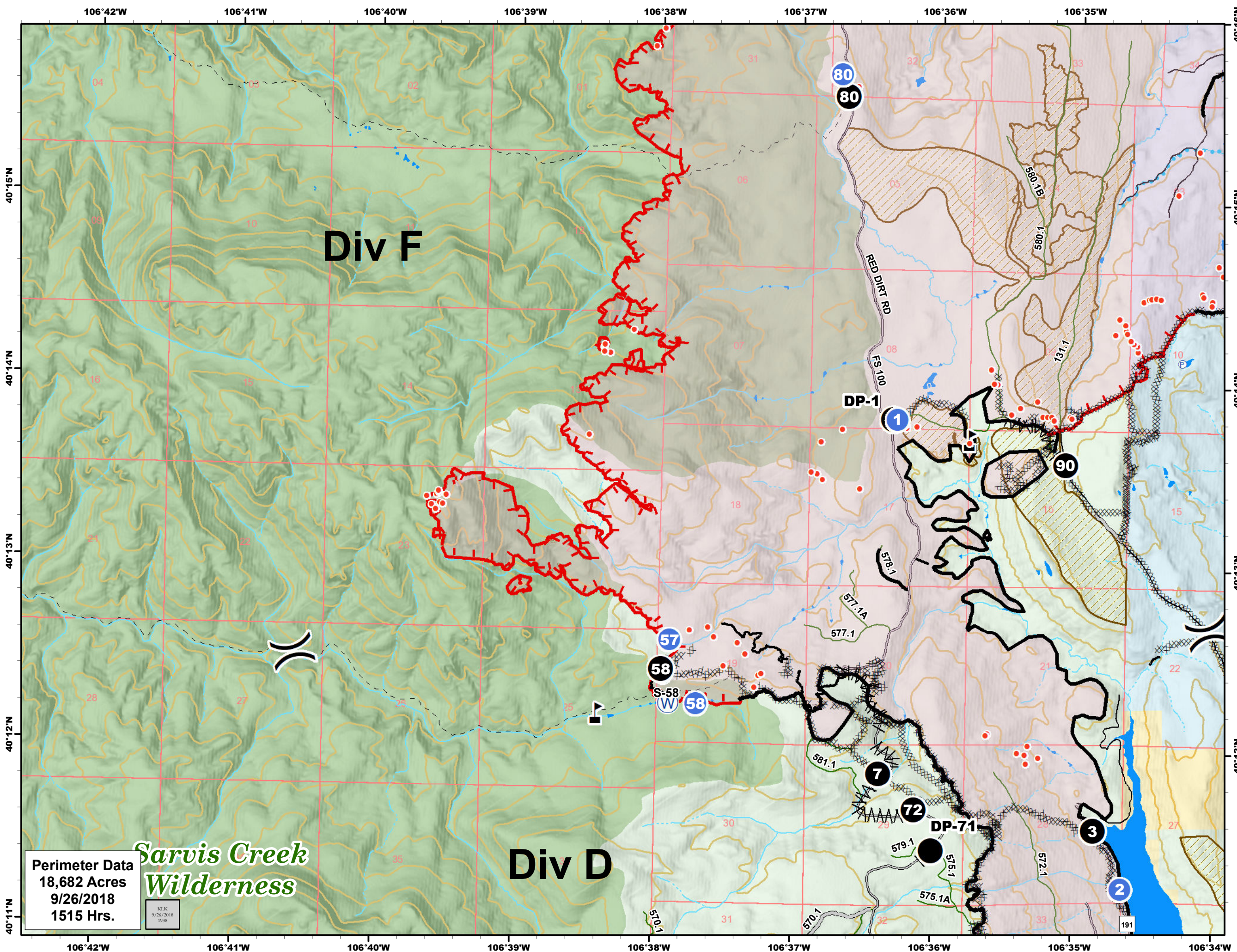
NAD83


0 0.5 1 Miles

- Drop Point
- Helispot
- Hot Spot
- Mobile Weather Unit
- Pump
- Spot Fire
- Value at Risk
- Division Break
- Completed Line
- Completed Dozer Line
- Completed Hand Line
- Road as Completed Line
- Uncontrolled Fire Edge
- Access or Improved Road
- Line Break Completed
- Completed Burnout
- Aerial Hazard
- Other
- Wildfire Daily Fire Perimeter
- Structures
- Highways
- County Roads
- Unknown/Private Route
- USFS Route
- Trail
- Distribution Powerline
- Timber Sale
- Bureau of Land Management
- Private
- State
- US Forest Service

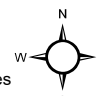
Perimeter Data
 18,682 Acres
 9/26/2018
 1515 Hrs.












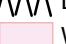



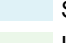








KLJK
 9/26/2018
 1937




Silver Creek Fire
IAP Map
 WY-MRF-000312
 9/27/2018

NAD83
 0 0.5 1 Miles

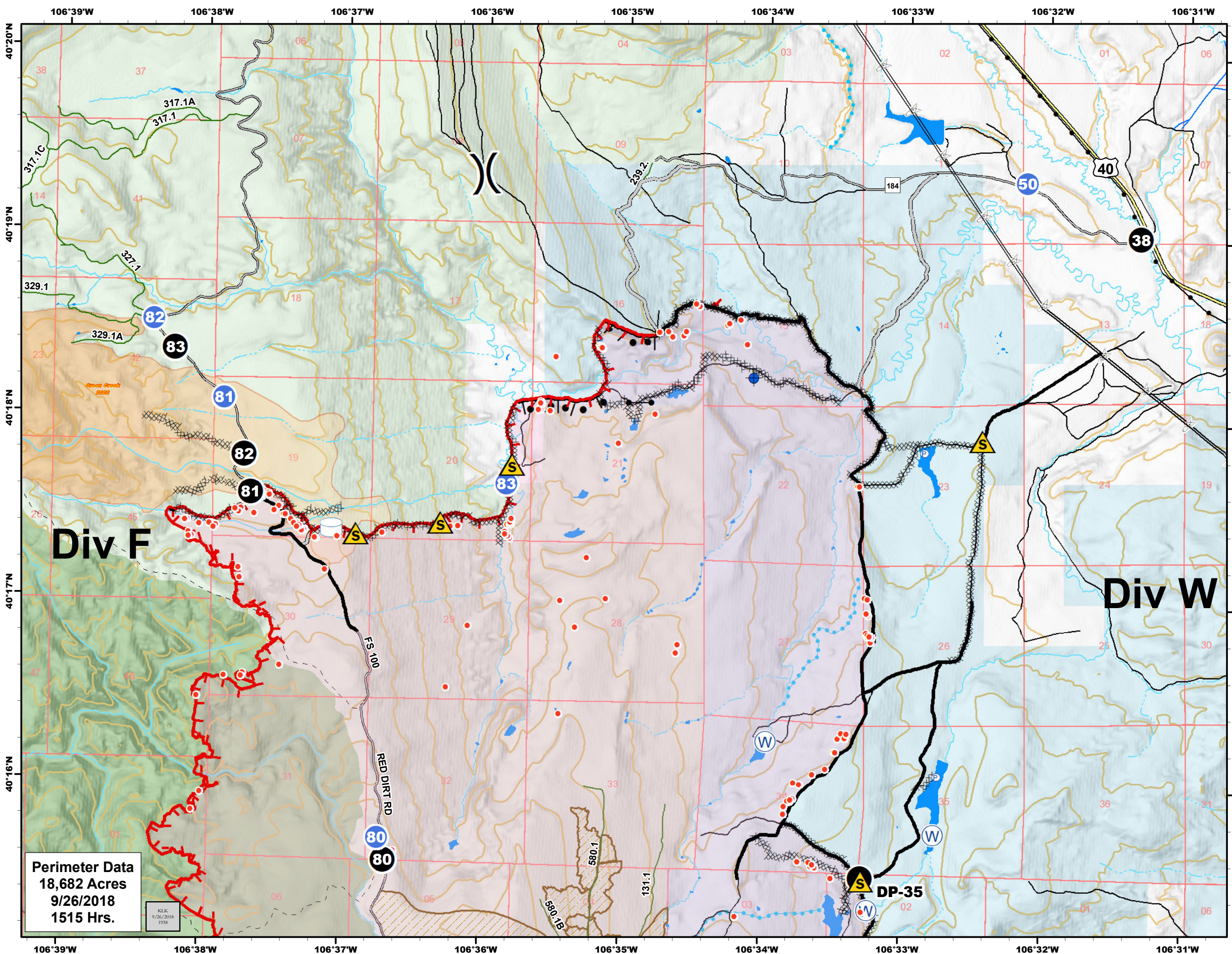


-  Drop Point
-  Helispot
-  Hot Spot
-  Pump
-  Sling Site
-  Water Source
-  Value at Risk
-  Division Break
-  Completed Line
-  Completed Dozer Line
-  Completed Hand Line
-  Road as Completed Line
-  Uncontrolled Fire Edge
-  Access or Improved Road
-  Line Break Completed
-  Wildfire Daily Fire Perimeter
-  County Roads
-  Unknown/Private Route
-  USFS Route
-  Trail
-  Timber Sale
-  Bureau of Land Management
-  State
-  US Forest Service

Perimeter Data
 18,682 Acres
 9/26/2018
 1515 Hrs.

Sarvis Creek
Wilderness

KJK
 9/26/2018
 1938



Silver Creek Fire
IAP Map
 WY-MRF-000312
 9/27/2018

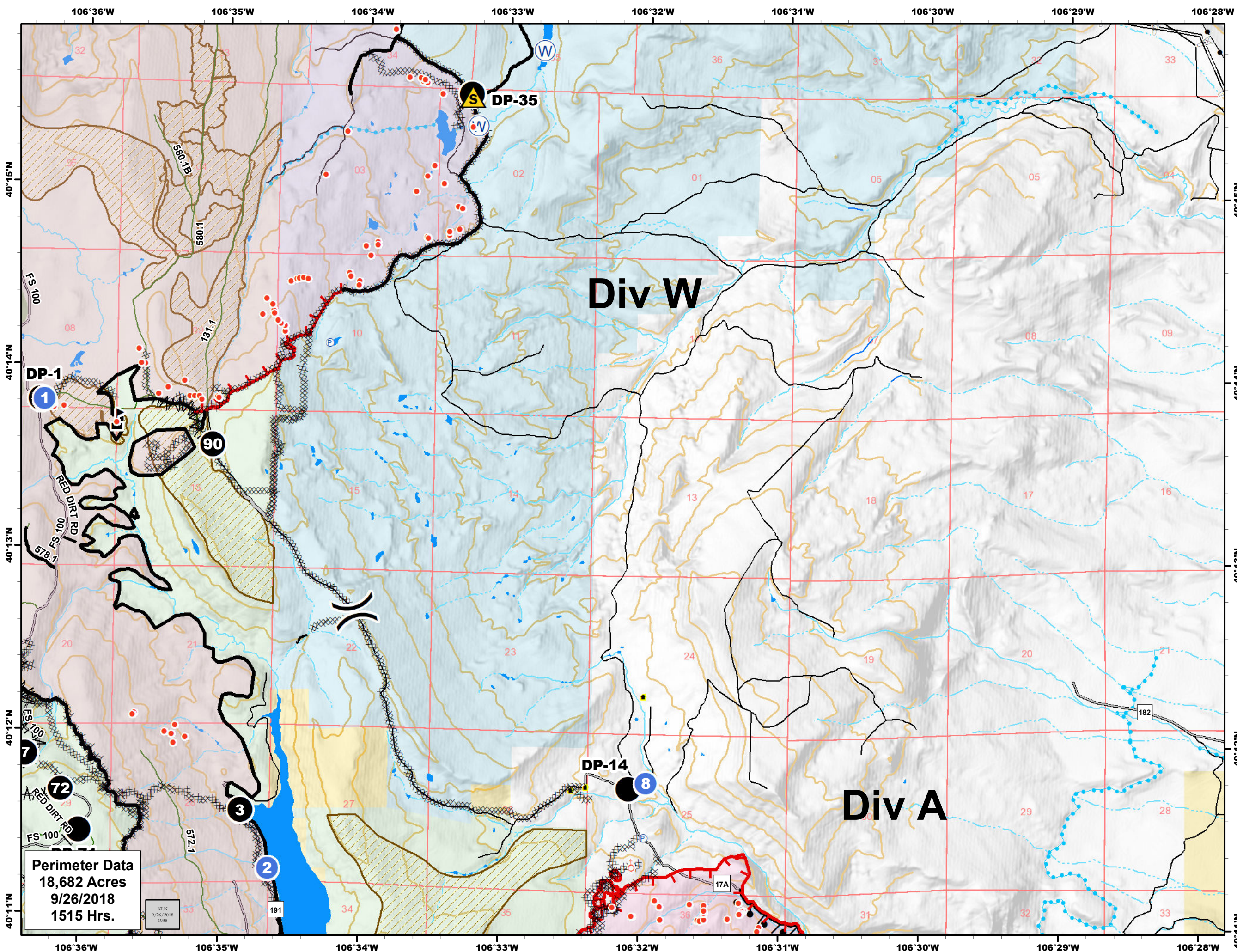
NAD83

0 0.5 1 Miles

- Dip Site
- Drop Point
- Gate
- Helispot
- Hot Spot
- Pump
- Safety Zone
- Water Source
- Water Tank
- Division Break
- Completed Line
- Completed Dozer Line
- Completed Hand Line
- Road as Completed Line
- Uncontrolled Fire Edge
- Access or Improved Road
- Completed Burnout
- Wildfire Daily Fire Perimeter
- Highways
- County Roads
- Unknown/Private Route
- USFS Route
- Trail
- Transmission Powerline
- Distribution Powerline
- Timber Sale
- Fire History Private
- Fire History State
- Fire History US Forest Service

Perimeter Data
 18,682 Acres
 9/26/2018
 1515 Hrs.

KLJK
 9/26/2018
 1938



Silver Creek Fire
IAP Map
 WY-MRF-000312
 9/27/2018

NAD83

0 0.5 1 Miles

- Drop Point
- Helispot
- Hot Spot
- Pump
- Safety Zone
- Spot Fire
- Water Source
- Value at Risk
- Division Break
- Completed Line
- Completed Dozer Line
- Completed Hand Line
- Road as Completed Line
- Uncontrolled Fire Edge
- Access or Improved Road
- Line Break Completed
- Completed Burnout
- Wildfire Daily Fire Perimeter
- Structures
- County Roads
- Unknown/Private Route
- USFS Route
- Trail
- Transmission Powerline
- Distribution Powerline
- Timber Sale
- Bureau of Land Management
- Private
- State
- US Forest Service

Perimeter Data
 18,682 Acres
 9/26/2018
 1515 Hrs.