

Steamboat Springs



# Silver Creek Fire Planning Map

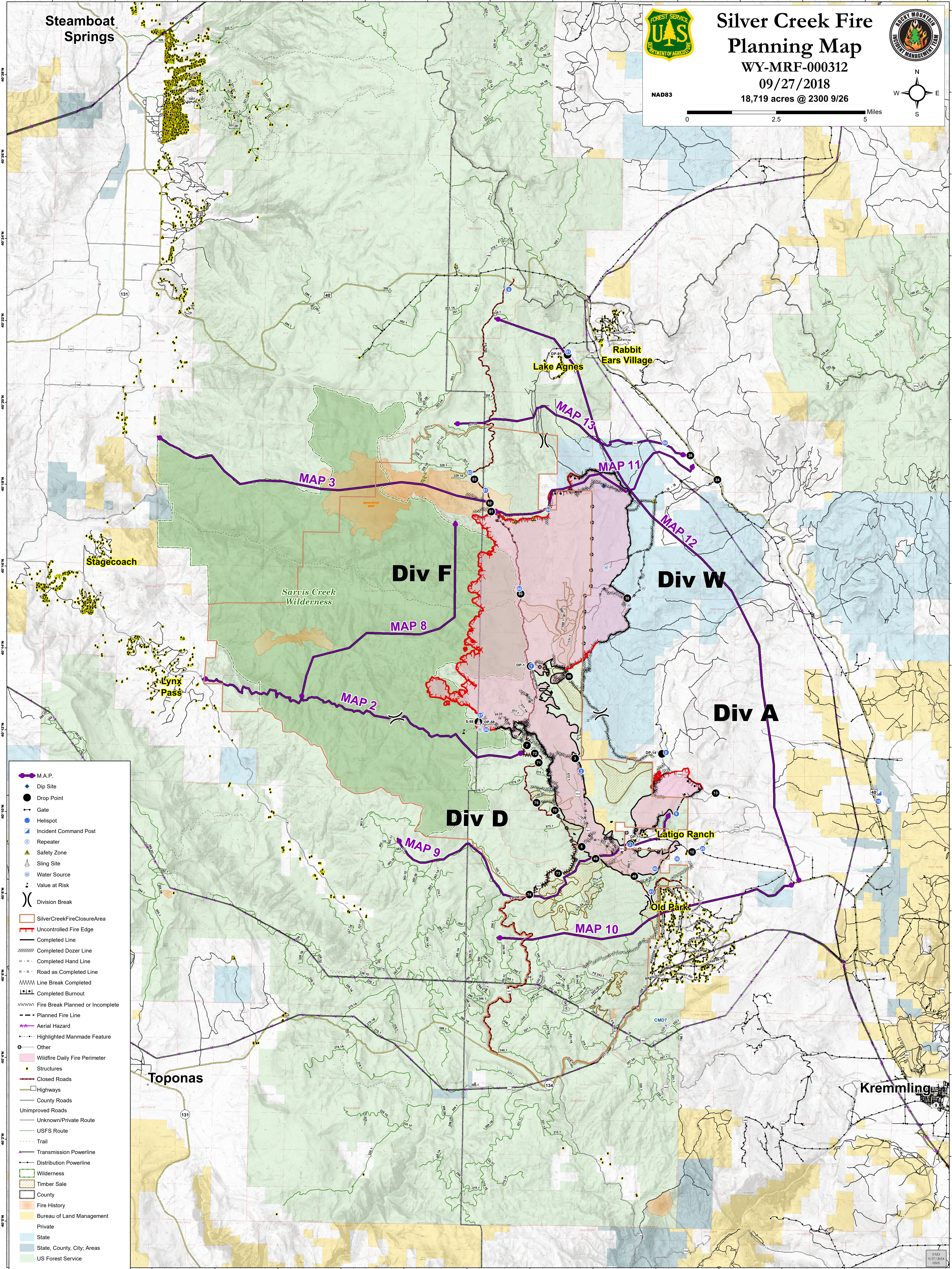
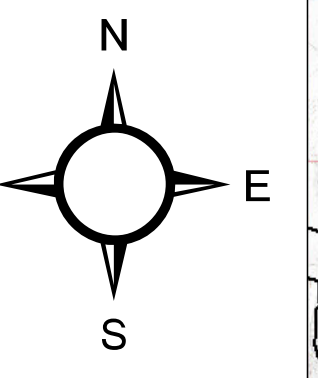
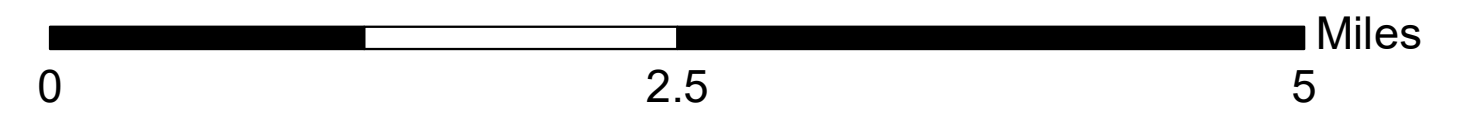
WY-MRF-000312

09/27/2018

18,719 acres @ 2300 9/26



NAD83



- M.A.P.
- Dip Site
- Drop Point
- Gate
- Helispot
- Incident Command Post
- Repeater
- Safety Zone
- Sling Site
- Water Source
- Value at Risk
- Division Break
- SilverCreekFireClosureArea
- Uncontrolled Fire Edge
- Completed Line
- Completed Dozer Line
- Completed Hand Line
- Road as Completed Line
- Line Break Completed
- Completed Burnout
- Fire Break Planned or Incomplete
- Planned Fire Line
- Aerial Hazard
- Highlighted Manmade Feature
- Other
- Wildfire Daily Fire Perimeter
- Structures
- Closed Roads
- Highways
- County Roads
- Unimproved Roads
- Unknown/Private Route
- USFS Route
- Trail
- Transmission Powerline
- Distribution Powerline
- Wilderness
- Timber Sale
- County
- Fire History
- Bureau of Land Management
- Private
- State
- State, County, City, Areas
- US Forest Service

40°28'N  
40°26'N  
40°24'N  
40°22'N  
40°20'N  
40°18'N  
40°16'N  
40°14'N  
40°12'N  
40°10'N  
40°08'N  
40°06'N  
40°04'N  
40°02'N  
40°00'N

106°52'W  
106°50'W  
106°48'W  
106°46'W  
106°44'W  
106°42'W  
106°40'W  
106°38'W  
106°36'W  
106°34'W  
106°32'W  
106°30'W  
106°28'W  
106°26'W  
106°24'W

Toponas

Latigo Ranch

Old Park

Kremmling

EMD  
9/27/2018  
09:05