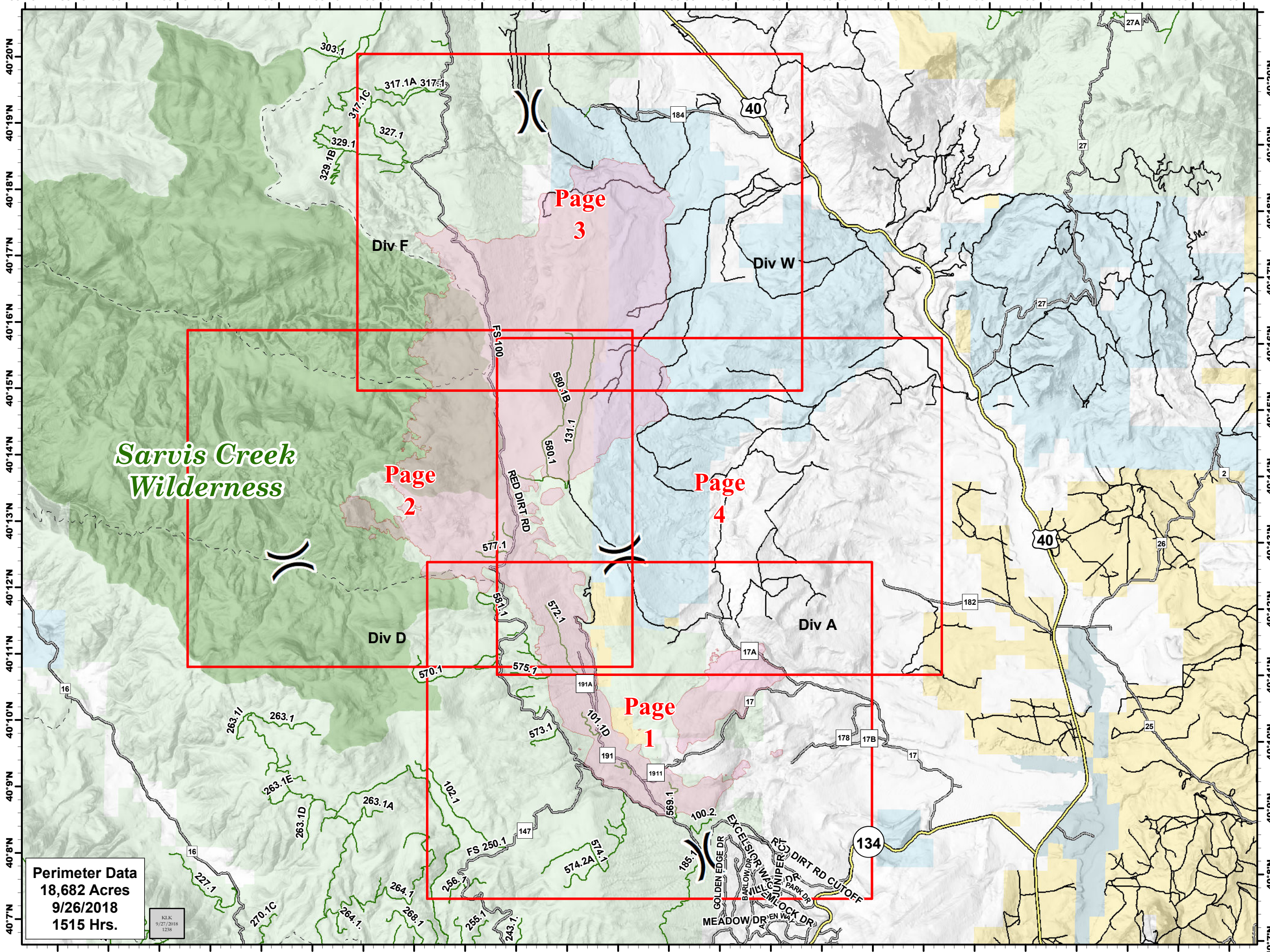


106°46'W 106°45'W 106°44'W 106°43'W 106°42'W 106°41'W 106°40'W 106°39'W 106°38'W 106°37'W 106°36'W 106°35'W 106°34'W 106°33'W 106°32'W 106°31'W 106°30'W 106°29'W 106°28'W 106°27'W 106°26'W 106°25'W 106°24'W 106°23'W 106°22'W



Silver Creek Fire
IAP Index Map
 WY-MRF-000312
 9/28-30/2018

NAD83

0 1 2 Miles

() Division Break

█ Wildfire Daily Fire Perimeter

█ Highways

█ County Roads

█ Unknown/Private Route

█ USFS Route

--- Trail

█ Bureau of Land Management

█ Private

█ State

█ State, County, City; Areas

█ US Forest Service

Perimeter Data
 18,682 Acres
 9/26/2018
 1515 Hrs.

KJK
 9/27/2018
 1258

106°45'W 106°44'W 106°43'W 106°42'W 106°41'W 106°40'W 106°39'W 106°38'W 106°37'W 106°36'W 106°35'W 106°34'W 106°33'W 106°32'W 106°31'W 106°30'W 106°29'W 106°28'W 106°27'W 106°26'W 106°25'W 106°24'W 106°23'W 106°22'W