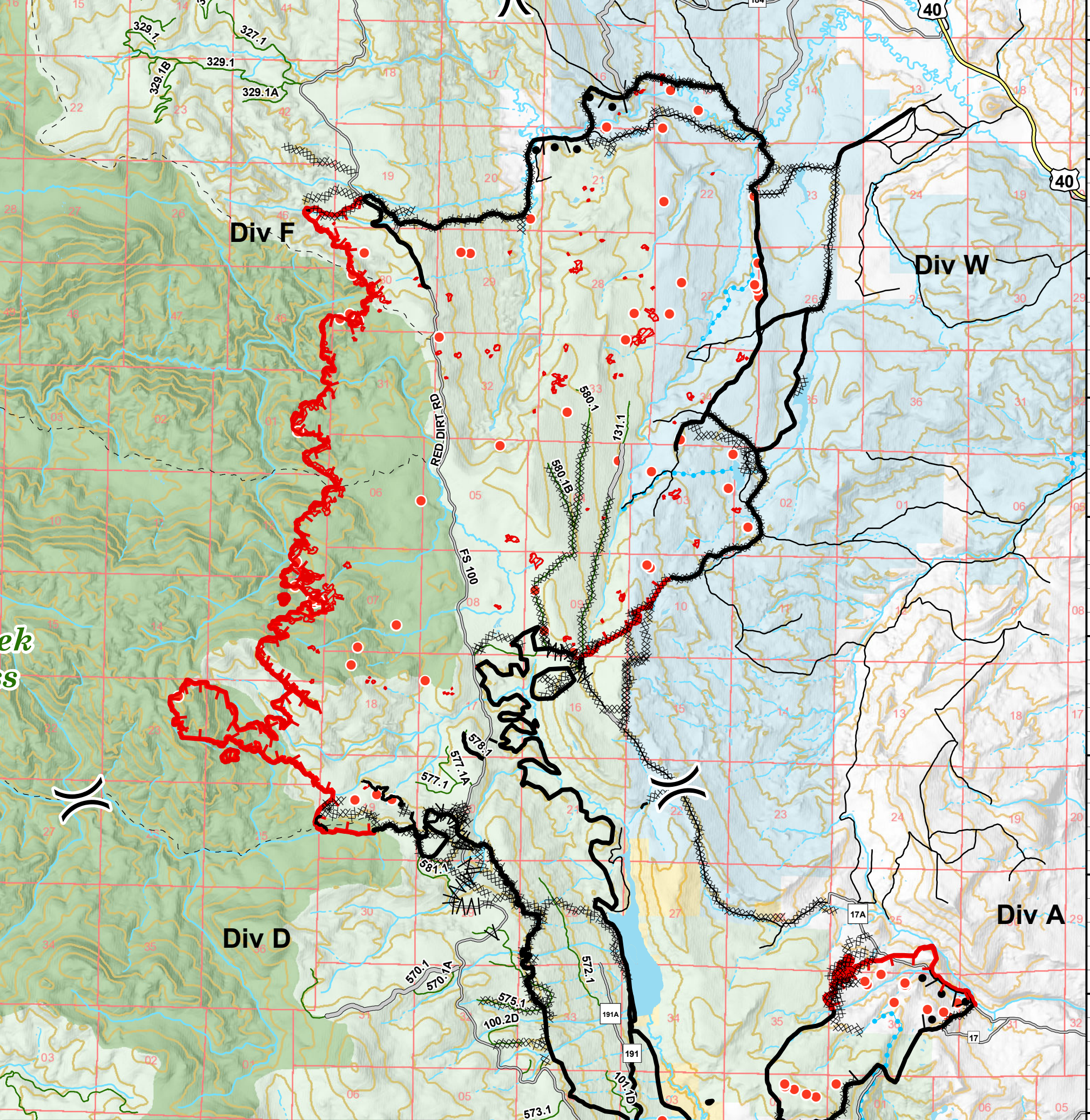


106°41'W 106°40'W 106°39'W 106°38'W 106°37'W 106°36'W 106°35'W 106°34'W 106°33'W 106°32'W 106°31'W 106°30'W

**Silver Creek Fire**  
**IR Map**  
 WY-MRF-000312  
 9/28/2018

NAD83  
 0 1 2 Miles



Isolated Heat	Highways
Intense Heat	County Roads
Heat Perimeter	Unknown/Private Route
Division Break	USFS Route
Completed Line	Trail
Completed Dozer Line	WaterBodies
Completed Hand Line	Bureau of Land Management
Road as Completed Line	Private
Uncontrolled Fire Edge	State
Access or Improved Road	US Forest Service
Line Break Completed	
Completed Burnout	
Aerial Hazard	
Other	

**Perimeter Data**  
 18,757 Acres  
 9/27/2018  
 2215 Hrs.

106°41'W 106°40'W 106°39'W 106°38'W 106°37'W 106°36'W 106°35'W 106°34'W 106°33'W 106°32'W 106°31'W 106°30'W