


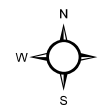
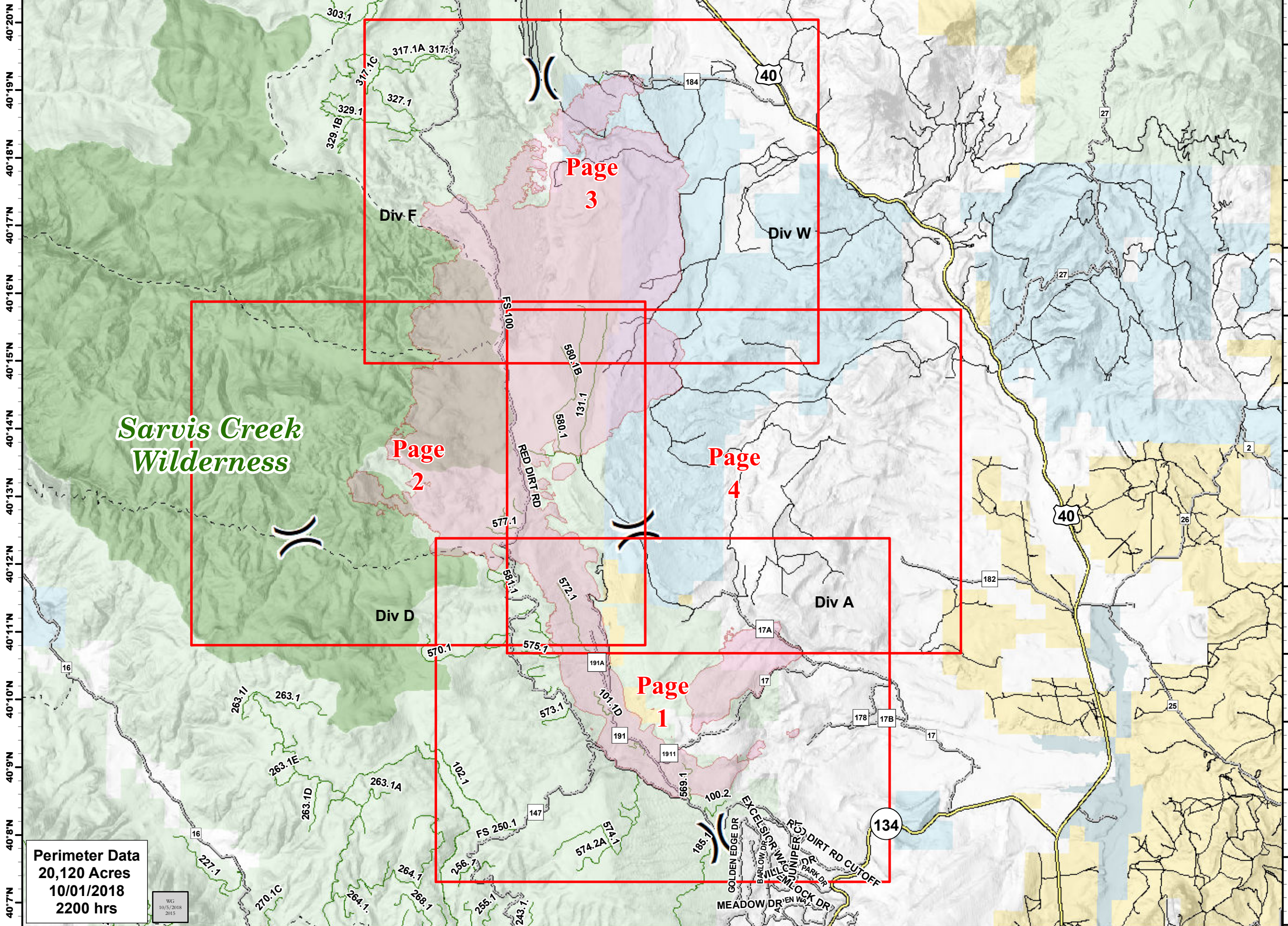
106°46'W 106°45'W 106°44'W 106°43'W 106°42'W 106°41'W 106°40'W 106°39'W 106°38'W 106°37'W 106°36'W 106°35'W 106°34'W 106°33'W 106°32'W 106°31'W 106°30'W 106°29'W 106°28'W 106°27'W 106°26'W 106°25'W 106°24'W 106°23'W 106°22'W



**Silver Creek Fire  
IAP Index Map**  
WY-MRF-000312  
10/06/2018

NAD83

0 1 2 Miles

**( )** Division Break

 Wildfire Daily Fire Perimeter

 Highways

 County Roads

 Unknown/Private Route

 USFS Route


 Trail

 Bureau of Land Management

 Private

 State

 State, County, City; Areas

 US Forest Service

*Sarvis Creek  
Wilderness*

Perimeter Data  
20,120 Acres  
10/01/2018  
2200 hrs

WG  
10/5/2018  
2015

106°45'W 106°44'W 106°43'W 106°42'W 106°41'W 106°40'W 106°39'W 106°38'W 106°37'W 106°36'W 106°35'W 106°34'W 106°33'W 106°32'W 106°31'W 106°30'W 106°29'W 106°28'W 106°27'W 106°26'W 106°25'W 106°24'W 106°23'W 106°22'W

40°20'N  
40°19'N  
40°18'N  
40°17'N  
40°16'N  
40°15'N  
40°14'N  
40°13'N  
40°12'N  
40°11'N  
40°10'N  
40°9'N  
40°8'N  
40°7'N