

TRANSPORTATION

Spring Creek
CO-CTX-001266
NAD 83
6/30/2018

(R) Repeater

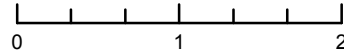
) Division Break

ROAD CLASS

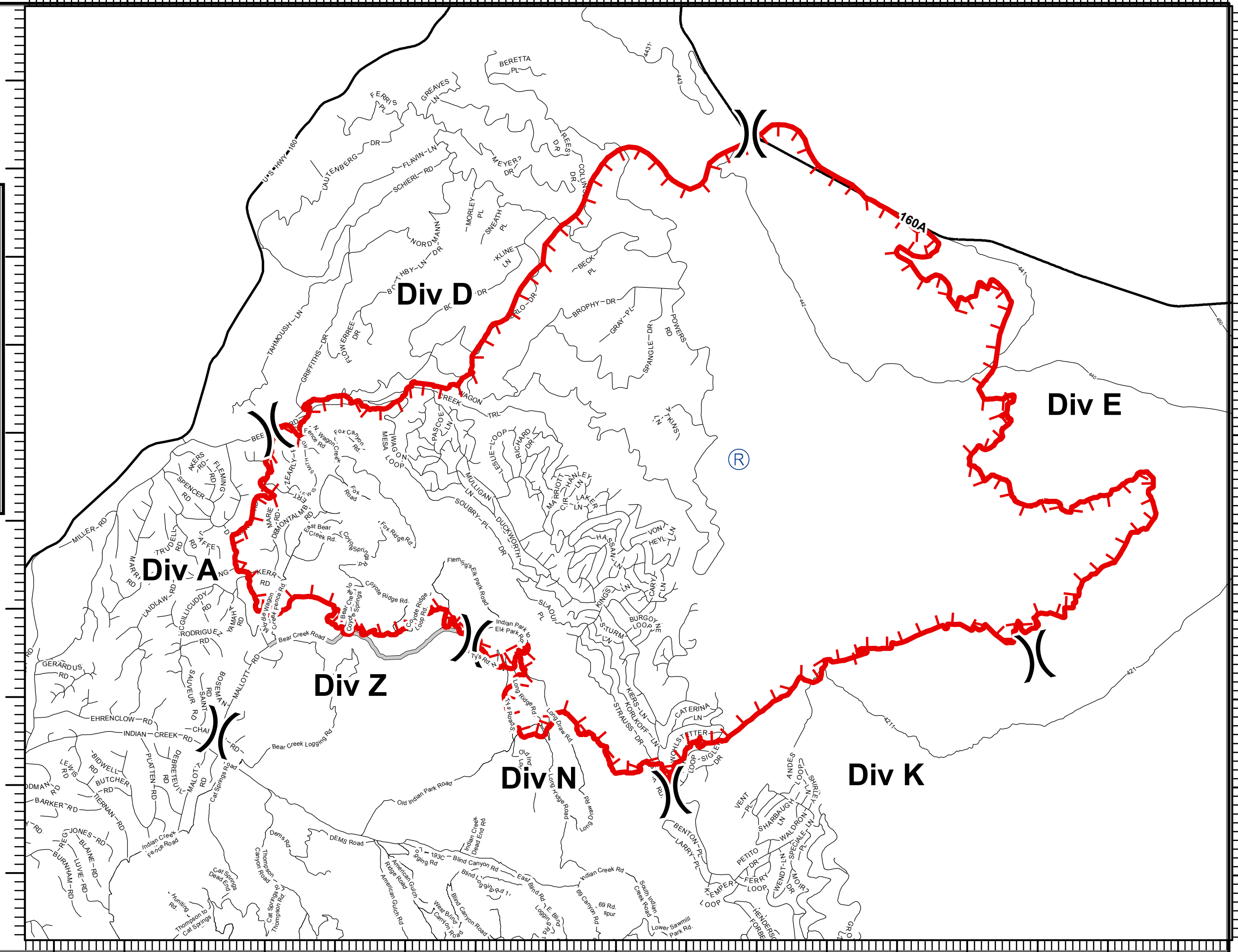
- LOCAL
- SECONDARY
- PRIMARY
- Uncontrolled Fire Edge
- Access or Improved Road



Miles



swempen
June 29, 2018
2100 Hours



105°20'W 105°19'W 105°18'W 105°17'W 105°16'W 105°15'W 105°14'W 105°13'W 105°11'W 105°11'W 105°10'W 105°8'W 105°8'W 105°7'W 105°6'W 105°5'W 105°4'W

37°35'N 37°34'N 37°33'N 37°32'N 37°31'N 37°30'N 37°29'N 37°28'N 37°26'N 37°26'N

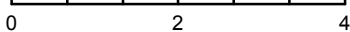
TRANSPORTATION

Spring Creek
CO-CTX-001266
NAD 83
6/30/2018

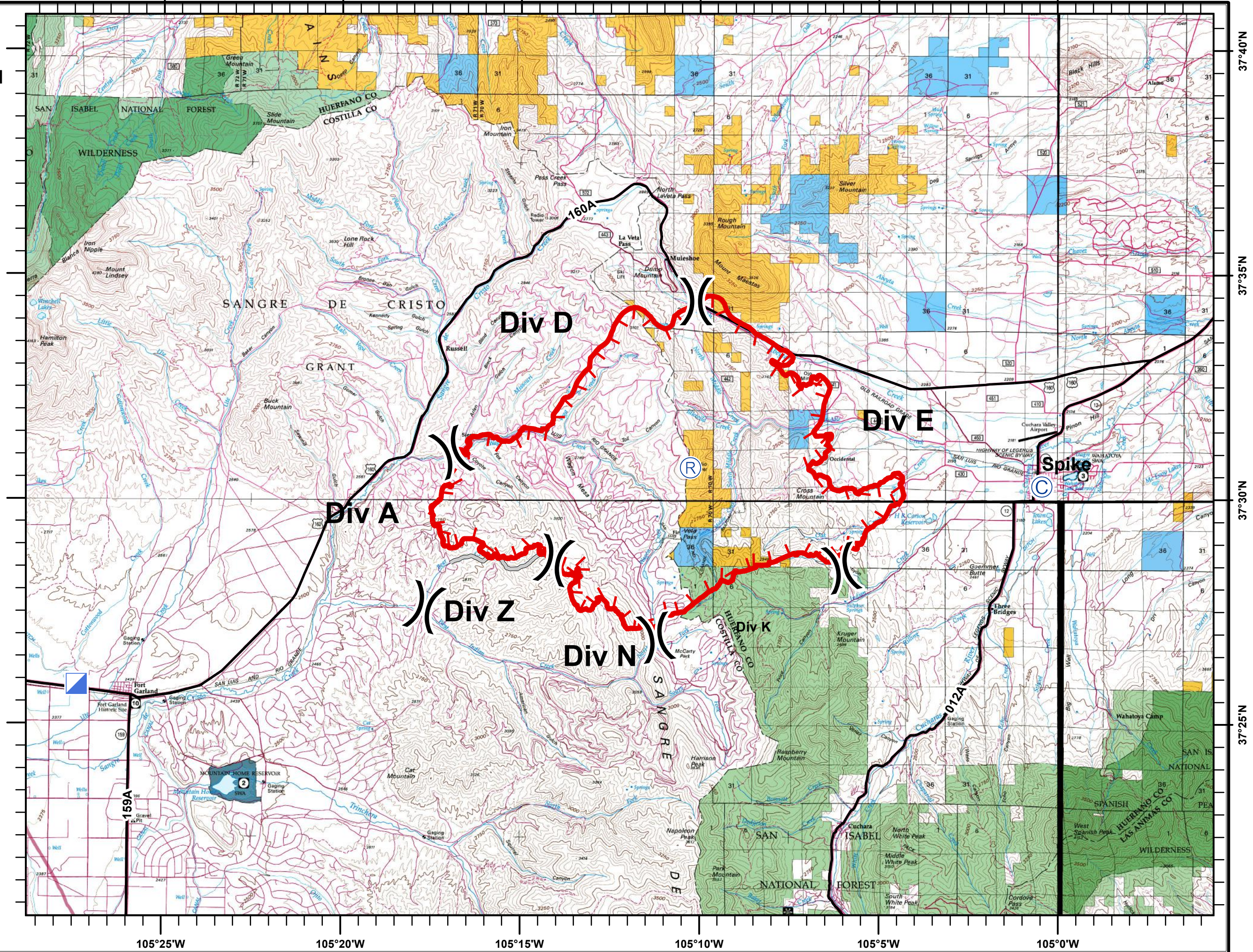
- Camp
- Incident Command Post
- Repeater
- Division Break
- Highways
- Uncontrolled Fire Edge
- Access or Improved Road



Miles



swempen
June 29, 2018
2100 Hours



37°40'N
37°35'N
37°30'N
37°25'N

105°25'W
105°20'W
105°15'W
105°10'W
105°5'W
105°0'W