

TRANSPORTATION

Spring Creek
CO-CTX-001266
NAD 83
07/02/2018

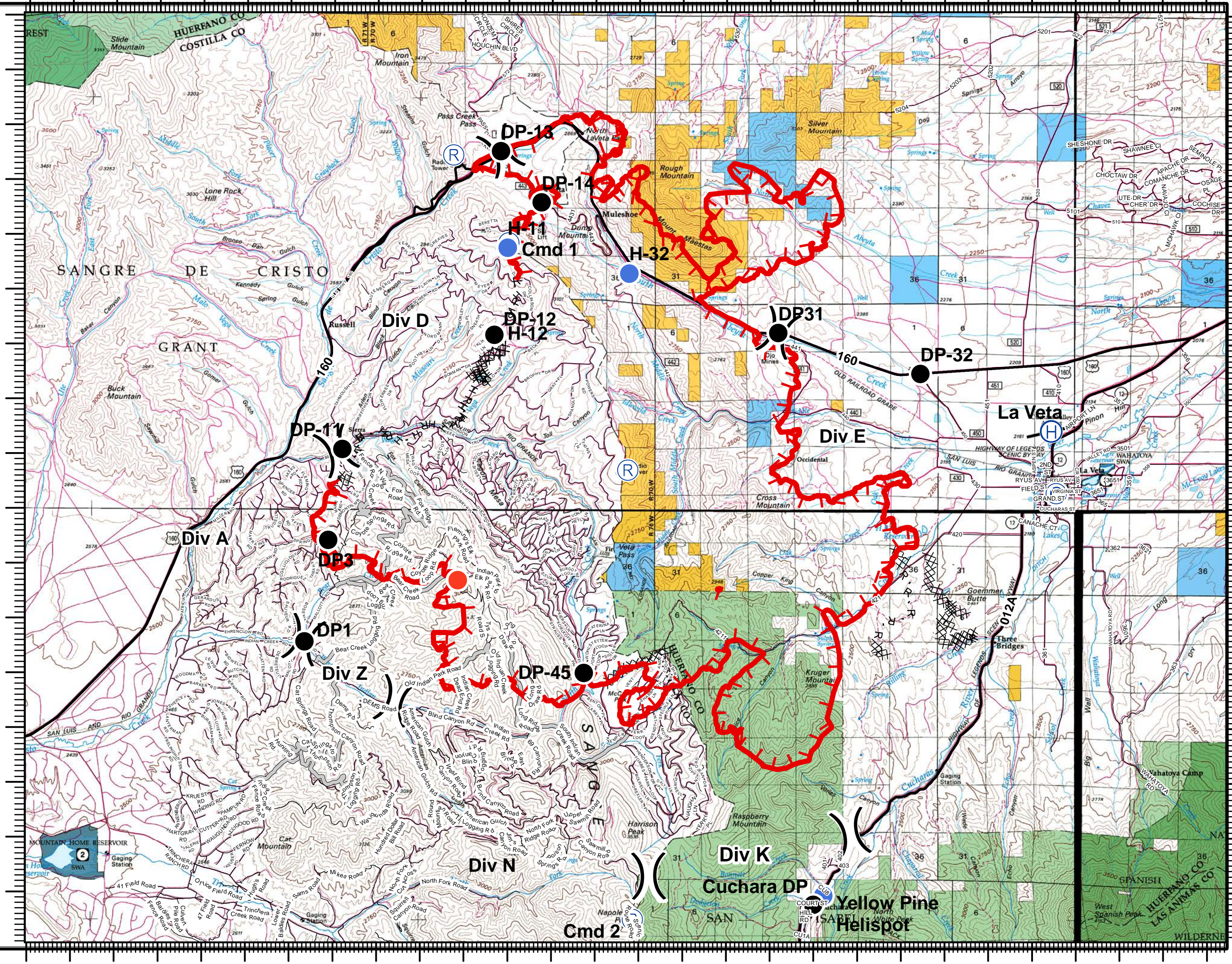
- Camp
- Drop Point
- Helibase
- Helispot
- Hot Spot
- Repeater
- Division Break

ROAD CLASS

- LOCAL
- SECONDARY
- PRIMARY
- Uncontrolled Fire Edge
- Completed Dozer Line
- Completed Hand Line
- Road as Completed Line
- Access or Improved Road

Miles
0 1.5 3

swempen
July 1, 2018
2100 Hours



105°23'W 105°21'W 105°19'W 105°17'W 105°15'W 105°13'W 105°11'W 105°8'W 105°7'W 105°5'W 105°3'W 105°1'W 104°59'W 104°56'W

37°23'N 37°25'N 37°26'N 37°26'N 37°28'N 37°29'N 37°30'N 37°31'N 37°32'N 37°33'N 37°34'N 37°35'N 37°36'N 37°37'N 37°38'N

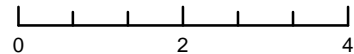
TRANSPORTATION

Spring Creek
CO-CTX-001266
NAD 07/01/2018

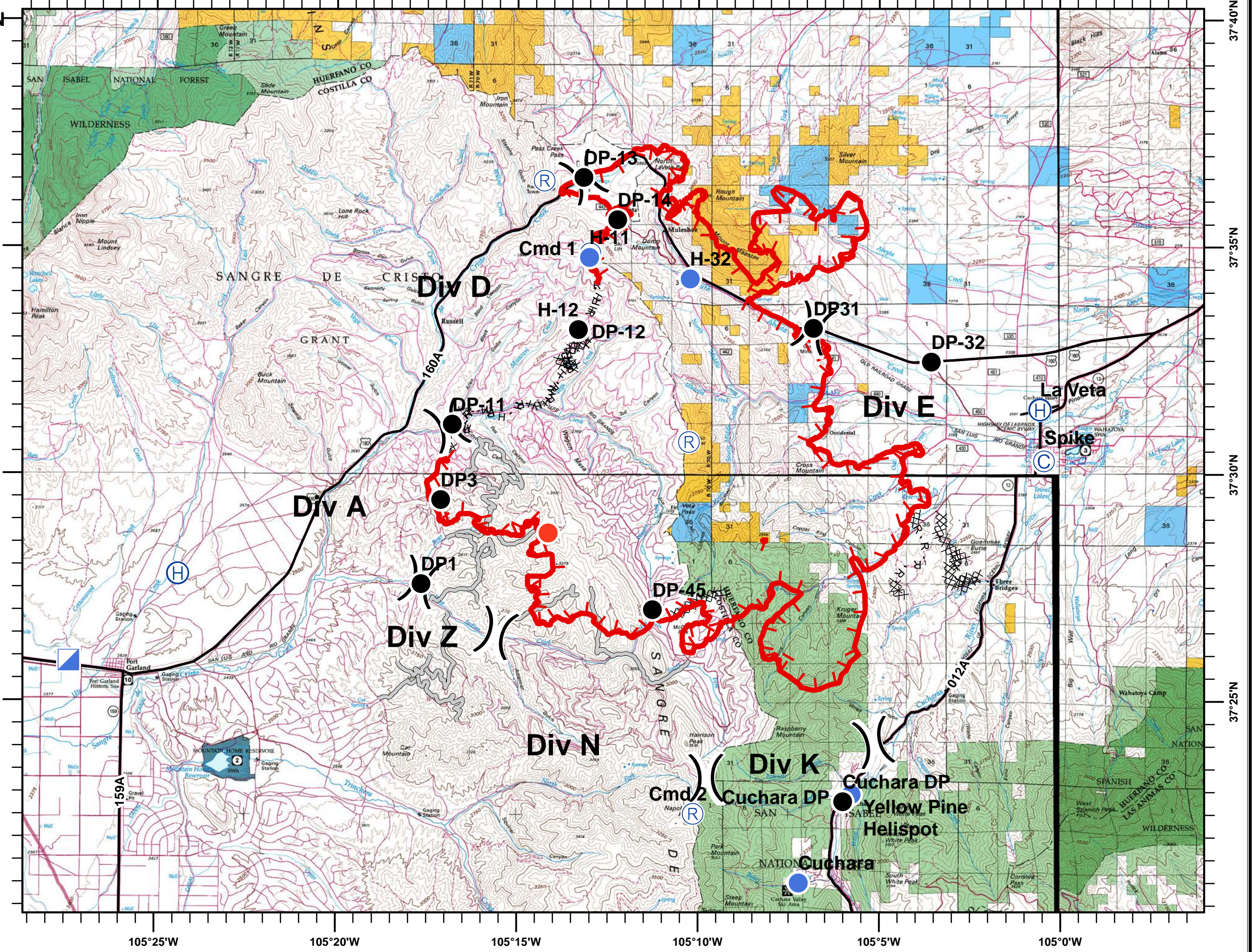
- Camp
- Drop Point
- Helibase
- Helispot
- Hot Spot
- Incident Command Post
- Repeater
- Division Break
- Highways
- Uncontrolled Fire Edge
- Completed Dozer Line
- Completed Hand Line
- Road as Road
- Road as Completed Line
- Access or Improved Road



Miles



swempen
July 1, 2018
2100 Hours



105°25'W 105°20'W 105°15'W 105°10'W 105°5'W 105°0'W

37°40'N
37°35'N
37°30'N
37°25'N