

TRANSPORTATION
Div N
Div K

Spring Creek
CO-CTX-001266
NAD 83
07/02/2018

Legend

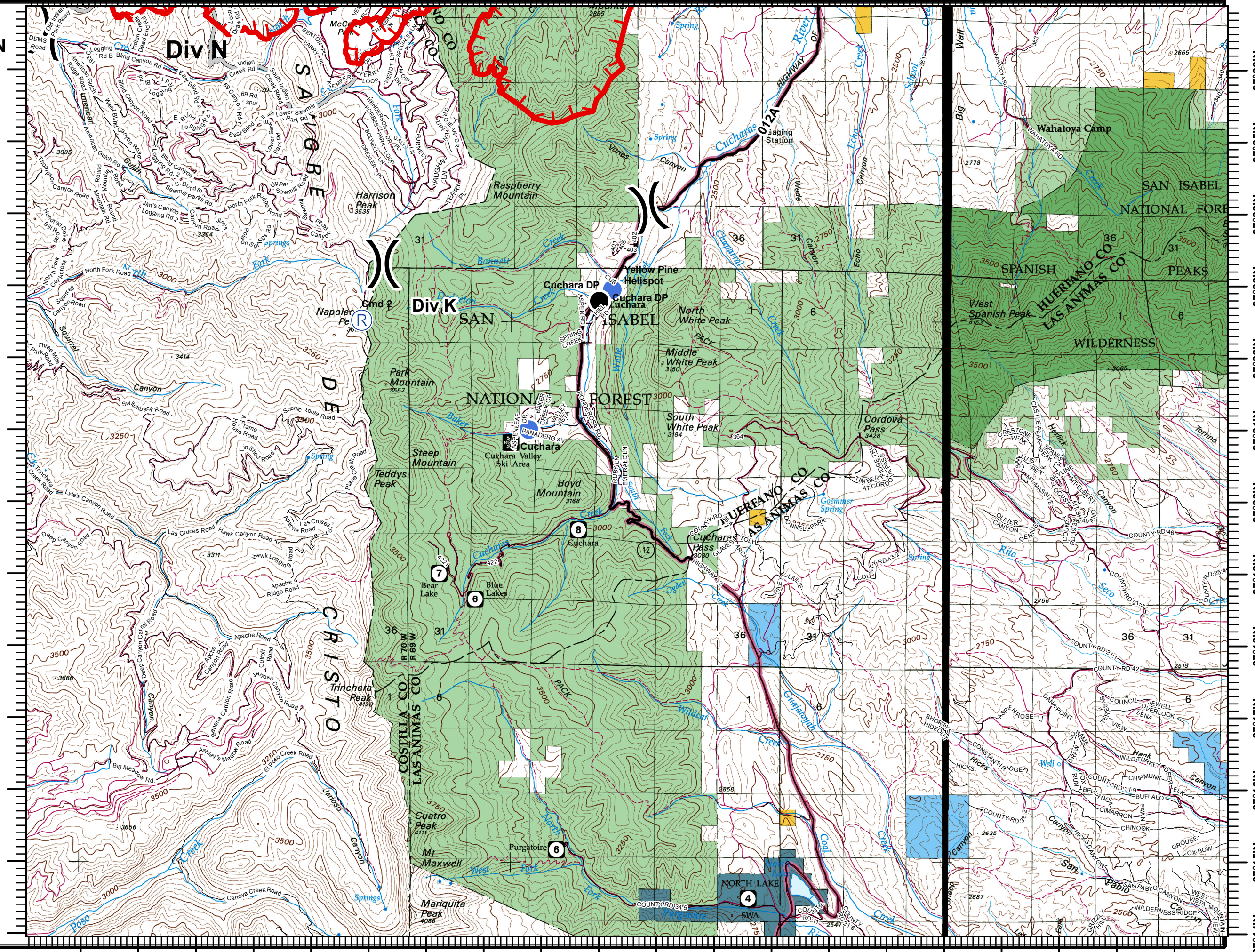

- Drop Point
- Helispot
- Ⓡ Repeater
- ⌋ Division Break

ROAD CLASS

- LOCAL
- SECONDARY
- PRIMARY
- Uncontrolled Fire Edge
- Access or Improved Road

North arrow and scale bar (0 to 2 Miles)

swempen
July 1, 2018
2100 Hours



105°15'W 105°14'W 105°13'W 105°11'W 105°11'W 105°10'W 105°8'W 105°8'W 105°7'W 105°6'W 105°5'W 105°4'W 105°3'W 105°2'W 105°1'W 105°0'W 104°59'W 104°58'W 104°56'W 104°56'W

37°26'N
37°25'N
37°23'N
37°22'N
37°21'N
37°20'N
37°19'N
37°18'N
37°17'N
37°16'N
37°15'N
37°14'N