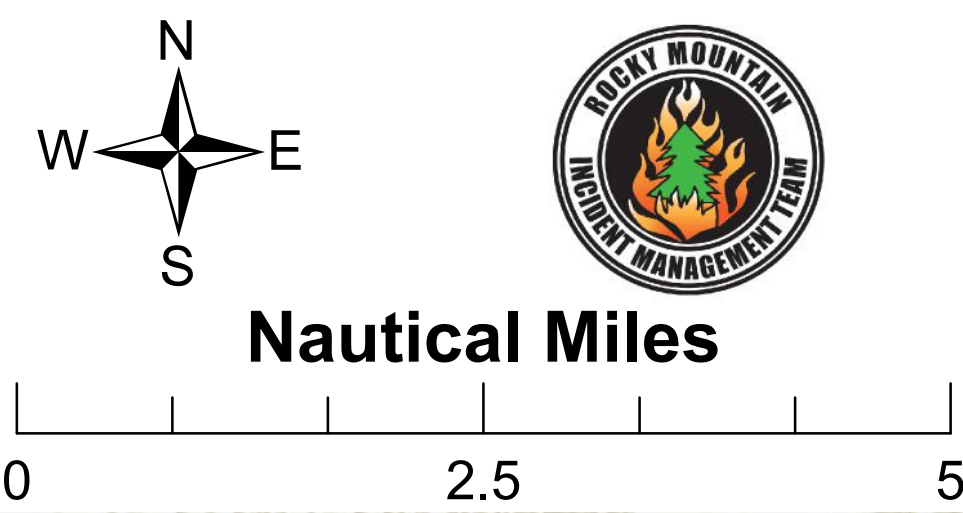


**Air Operations
Spring Creek
CO-CTX-001266
NAD 83
Approx 90,375 acres
as of 1700 07/03/2018**

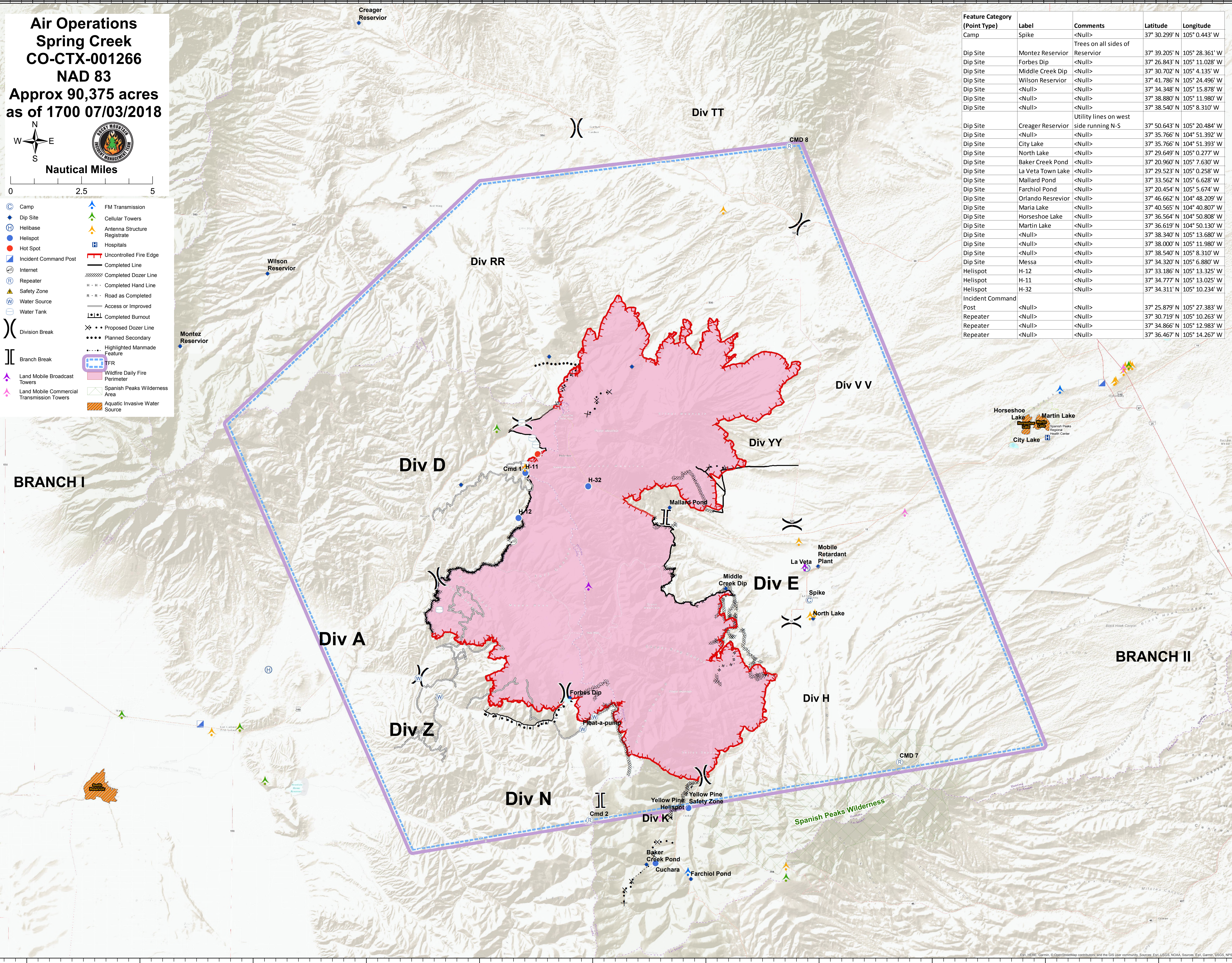


- | | |
|--|---------------------------------|
| ● Camp | ▲ FM Transmission |
| ◆ Dip Site | ▲ Cellular Towers |
| ⊕ Helibase | ▲ Antenna Structure Registrars |
| ● Helispot | ⊠ Hospitals |
| ● Hot Spot | — Uncontrolled Fire Edge |
| ⊠ Incident Command Post | — Completed Line |
| ⊠ Internet | ⊠ Completed Dozer Line |
| ⊠ Repeater | ⊠ Completed Hand Line |
| ▲ Safety Zone | ⊠ Road as Completed |
| ⊠ Water Source | ⊠ Access or Improved |
| ⊠ Water Tank | ⊠ Completed Burnout |
| ⊠ Division Break | ⊠ Proposed Dozer Line |
| ⊠ Branch Break | ⊠ Planned Secondary |
| ▲ Land Mobile Broadcast Towers | ⊠ Highlighted Manmade Feature |
| ▲ Land Mobile Commercial Transmission Towers | ⊠ TFR |
| | ⊠ Wildfire Daily Fire Perimeter |
| | ⊠ Spanish Peaks Wilderness Area |
| | ⊠ Aquatic Invasive Water Source |

Feature Category (Point Type)	Label	Comments	Latitude	Longitude
Camp	Spike	<Null>	37° 30.299' N	105° 0.443' W
Dip Site	Montez Reservoir	Reservoir	37° 39.205' N	105° 28.361' W
Dip Site	Forbes Dip	<Null>	37° 26.843' N	105° 11.028' W
Dip Site	Middle Creek Dip	<Null>	37° 30.702' N	105° 4.135' W
Dip Site	Wilson Reservoir	<Null>	37° 41.786' N	105° 24.496' W
Dip Site	<Null>	<Null>	37° 34.348' N	105° 15.878' W
Dip Site	<Null>	<Null>	37° 38.880' N	105° 11.980' W
Dip Site	<Null>	<Null>	37° 38.540' N	105° 8.310' W
Dip Site	Creager Reservoir	Utility lines on west side running N-S	37° 50.643' N	105° 20.484' W
Dip Site	<Null>	<Null>	37° 35.766' N	104° 51.392' W
Dip Site	City Lake	<Null>	37° 35.766' N	104° 51.393' W
Dip Site	North Lake	<Null>	37° 29.649' N	105° 0.277' W
Dip Site	Baker Creek Pond	<Null>	37° 20.960' N	105° 7.630' W
Dip Site	La Veta Town Lake	<Null>	37° 29.523' N	105° 0.258' W
Dip Site	Mallard Pond	<Null>	37° 33.562' N	105° 6.628' W
Dip Site	Farchiol Pond	<Null>	37° 20.454' N	105° 5.674' W
Dip Site	Orlando Reservoir	<Null>	37° 46.662' N	104° 48.209' W
Dip Site	Maria Lake	<Null>	37° 40.565' N	104° 40.807' W
Dip Site	Horseshoe Lake	<Null>	37° 36.564' N	104° 50.808' W
Dip Site	Martin Lake	<Null>	37° 36.619' N	104° 50.130' W
Dip Site	<Null>	<Null>	37° 38.340' N	105° 13.680' W
Dip Site	<Null>	<Null>	37° 38.000' N	105° 11.980' W
Dip Site	<Null>	<Null>	37° 38.540' N	105° 8.310' W
Dip Site	Messa	<Null>	37° 34.320' N	105° 6.880' W
Helispot	H-12	<Null>	37° 33.186' N	105° 13.325' W
Helispot	H-11	<Null>	37° 34.777' N	105° 13.025' W
Helispot	H-32	<Null>	37° 34.311' N	105° 10.234' W
Incident Command Post	<Null>	<Null>	37° 25.879' N	105° 27.383' W
Repeater	<Null>	<Null>	37° 30.719' N	105° 10.263' W
Repeater	<Null>	<Null>	37° 34.866' N	105° 12.983' W
Repeater	<Null>	<Null>	37° 36.467' N	105° 14.267' W

BRANCH I

BRANCH II



Esri, HERE, Garmin, © OpenStreetMap contributors, and the GIS user community, Sources: Esri, USGS, NOAA, Sources: Esri, Garmin, USGS, NPS