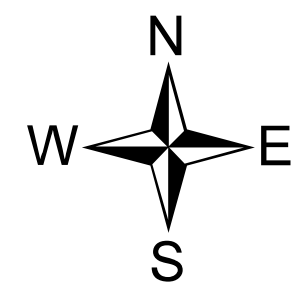


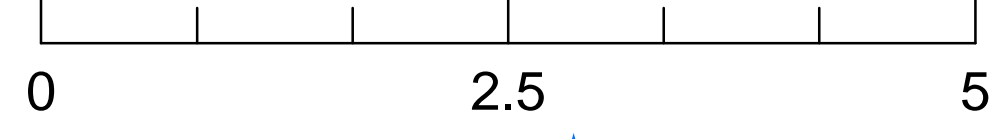
# Air Operations

**CO-CTX-1266**  
**Spring Creek**  
**NAD 83**

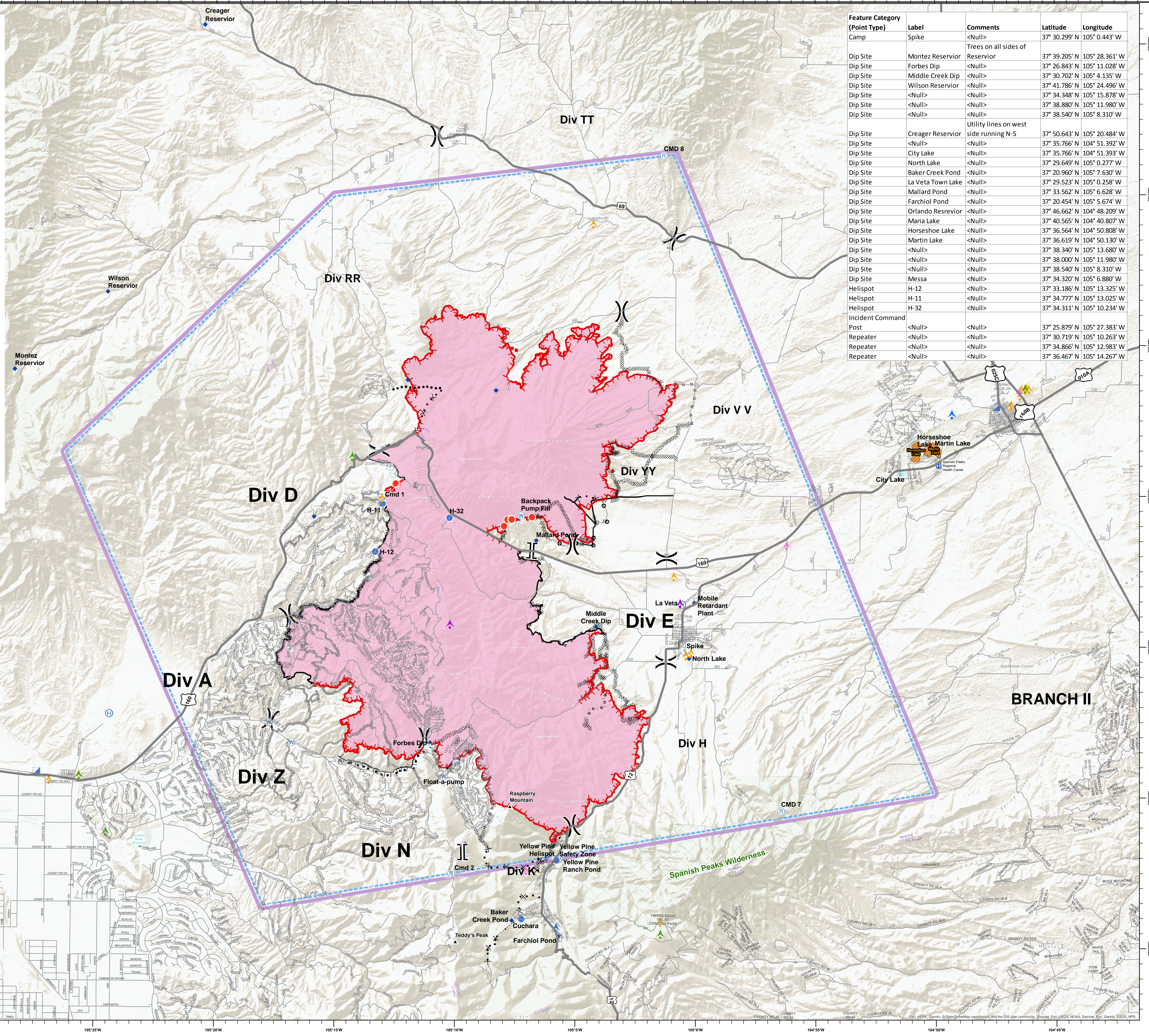
**07/05/2018**  
**Approx 95,739 acres**  
**as of 1600 7/4/2018**



Nautical Miles



- ▲ Landmarks
- Camp
- ◆ Dip Site
- ⊕ Helibase
- Hot Spot
- ⊠ Incident Command Post
- Ⓜ Internet
- Ⓜ Repeater
- ▲ Safety Zone
- Ⓜ Water Source
- Ⓜ Water Tank
- ⎓ Division Break
- ⎓ Branch Break
- ▲ Land Mobile Broadcast Towers
- ▲ Land Mobile Commercial Transmission Towers
- ▲ FM Transmission Towers
- ▲ Cellular Towers
- ▲ Antenna Structure Registrars
- ⊠ Hospitals
- ⎓ Uncontrolled Fire Edge
- ⎓ Completed Line
- ⎓ Completed Dozer Line
- ⎓ Completed Hand Line
- ⎓ Road as Completed Line
- ⎓ Access or Improved Road
- ⎓ Line Break Completed
- ⎓ Completed Burnout
- ⎓ Proposed Dozer Line
- ⎓ Planned Secondary Line
- ◇ Aerial Retardant Drop
- ⎓ Highlighted Manmade Feature
- ⎓ Other
- ⎓ IFR
- ⎓ Wildfire Daily Fire Perimeter
- ⎓ Spanish Peaks Wilderness Area
- ⎓ Aquatic Invasive Water Source



Feature Category (Point Type)	Label	Comments	Latitude	Longitude
Camp	Spike	Trees on all sides of	37° 30.299' N	105° 0.443' W
Dip Site	Montez Reservoir	Reservoir	37° 39.205' N	105° 28.361' W
Dip Site	Forbes Dip	<Null>	37° 26.843' N	105° 11.028' W
Dip Site	Middle Creek Dip	<Null>	37° 30.702' N	105° 4.135' W
Dip Site	Wilson Reservoir	<Null>	37° 41.786' N	105° 24.496' W
Dip Site	<Null>	<Null>	37° 34.348' N	105° 15.878' W
Dip Site	<Null>	<Null>	37° 38.880' N	105° 11.980' W
Dip Site	<Null>	<Null>	37° 38.540' N	105° 8.310' W
Dip Site	Creager Reservoir	Utility lines on west side running N-S	37° 50.643' N	105° 20.484' W
Dip Site	<Null>	<Null>	37° 35.766' N	104° 51.392' W
Dip Site	City Lake	<Null>	37° 35.766' N	104° 51.393' W
Dip Site	North Lake	<Null>	37° 29.649' N	105° 0.277' W
Dip Site	Baker Creek Pond	<Null>	37° 20.960' N	105° 7.630' W
Dip Site	La Veta Town Lake	<Null>	37° 29.523' N	105° 0.258' W
Dip Site	Mallard Pond	<Null>	37° 33.562' N	105° 6.628' W
Dip Site	Farchiol Pond	<Null>	37° 20.454' N	105° 5.674' W
Dip Site	Orlando Reservoir	<Null>	37° 46.662' N	104° 48.209' W
Dip Site	Maria Lake	<Null>	37° 40.565' N	104° 40.807' W
Dip Site	Horseshoe Lake	<Null>	37° 36.564' N	104° 50.808' W
Dip Site	Martin Lake	<Null>	37° 36.619' N	104° 50.130' W
Dip Site	<Null>	<Null>	37° 38.340' N	105° 13.680' W
Dip Site	<Null>	<Null>	37° 38.000' N	105° 11.980' W
Dip Site	<Null>	<Null>	37° 38.540' N	105° 8.310' W
Dip Site	Messa	<Null>	37° 34.320' N	105° 6.880' W
Helispot	H-12	<Null>	37° 33.186' N	105° 13.325' W
Helispot	H-11	<Null>	37° 34.777' N	105° 13.025' W
Helispot	H-32	<Null>	37° 34.311' N	105° 10.234' W
Incident Command Post	<Null>	<Null>	37° 25.879' N	105° 27.383' W
Repeater	<Null>	<Null>	37° 30.719' N	105° 10.263' W
Repeater	<Null>	<Null>	37° 34.866' N	105° 12.983' W
Repeater	<Null>	<Null>	37° 36.467' N	105° 14.267' W

BRANCH II

Spanish Peaks Wilderness

BRANCH I