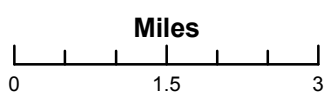


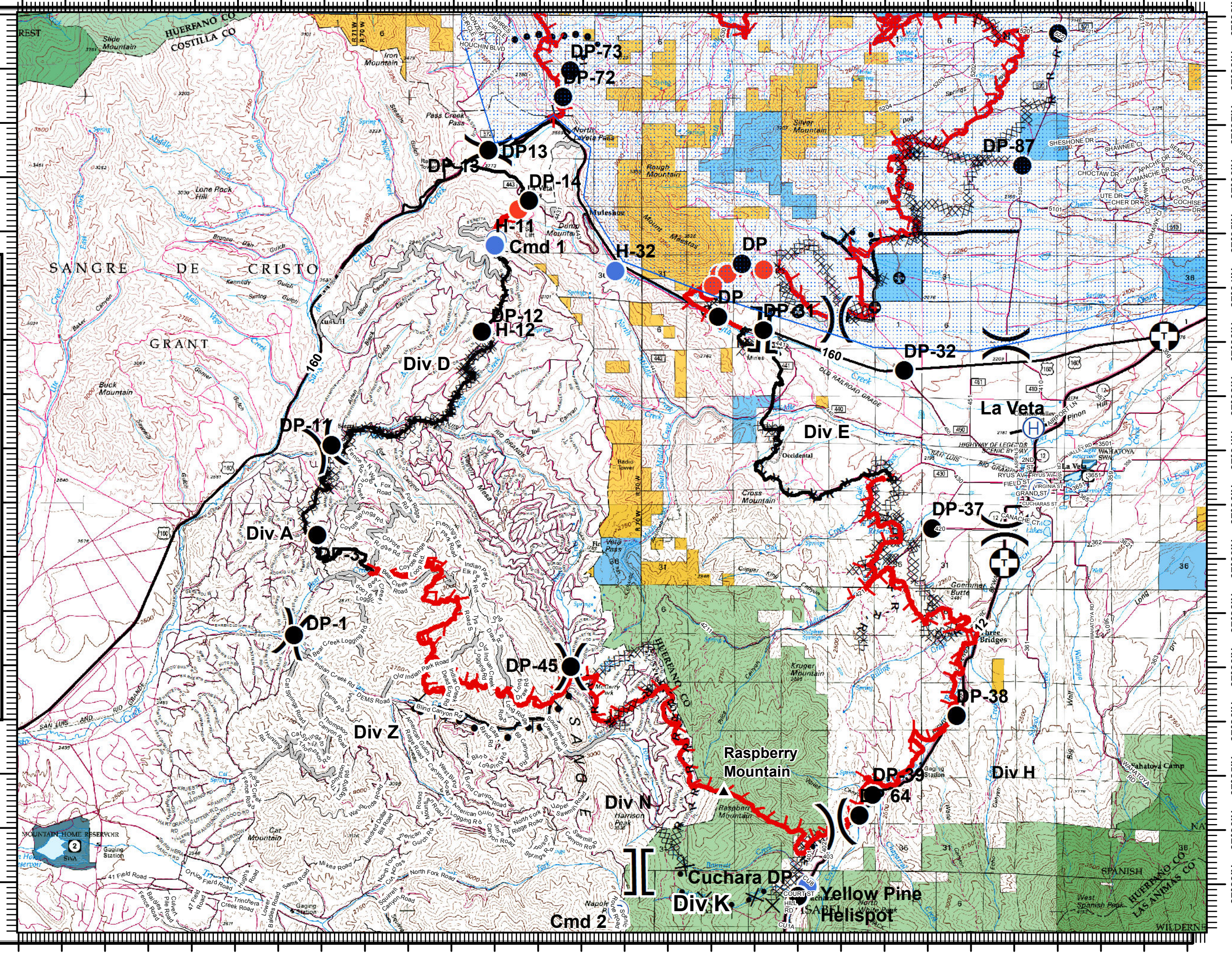
Transportation

CO-CTX1266
Spring Creek
NAD 83
07/05/2018
Approx 95,739 acres
as of 1600 07/04/2018

▲ Landmarks	— Uncontrolled Fire Edge
⊕ Closures	— Completed Line
Ⓢ Camp	⊗ Completed Dozer Line
● Drop Point	H - Completed Hand Line
Ⓜ Helibase	R - Road as Completed Line
● Helispot	— Access or Improved Road
● Hot Spot	— Line Break Completed
Ⓡ Repeater	⊙ Completed Burnout
⌋ Division Break	⊗ Proposed Dozer Line
⌌ Branch Break	● Planned Secondary Line
	◇ Aerial Retardant Drop
	● Highlighted Manmade Feature
	⊕ Other
	Ⓜ Team Blue



S. Wempen
7/4/2018
2049 hrs



105°23'W 105°21'W 105°19'W 105°17'W 105°15'W 105°13'W 105°11'W 105°8'W 105°7'W 105°5'W 105°3'W 105°1'W 104°59'W 104°56'W

37°23'N 37°23'N 37°23'N 37°25'N 37°26'N 37°26'N 37°28'N 37°29'N 37°30'N 37°31'N 37°32'N 37°33'N 37°34'N 37°35'N 37°36'N 37°37'N 37°38'N