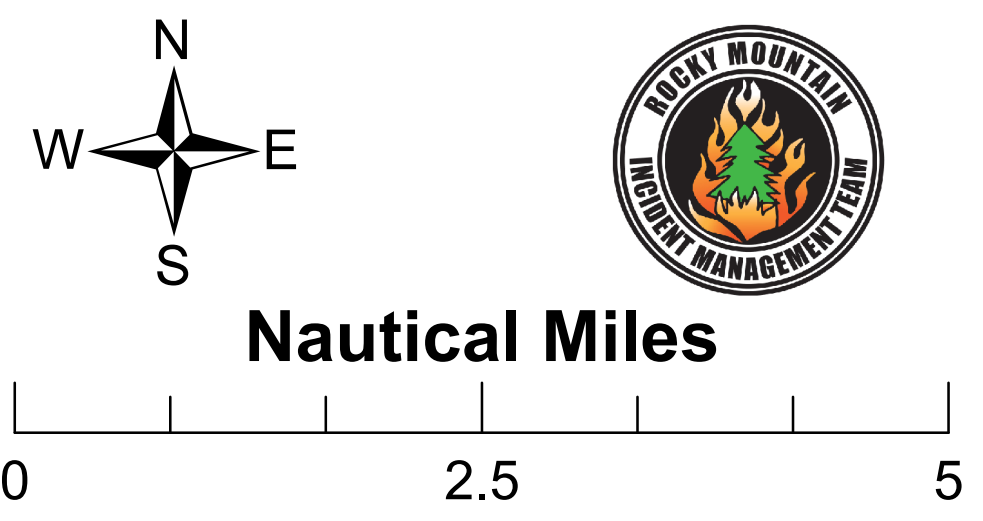


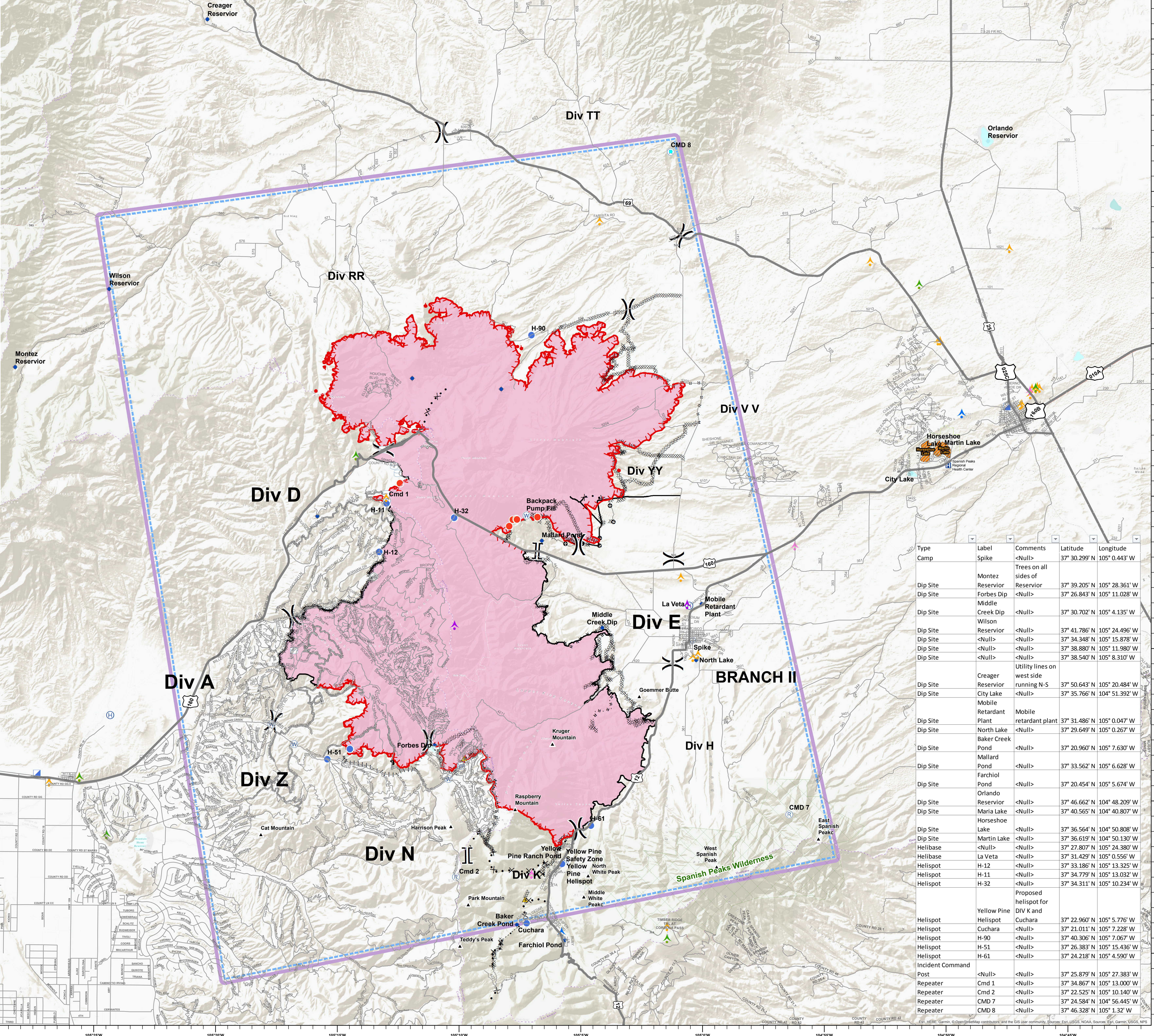
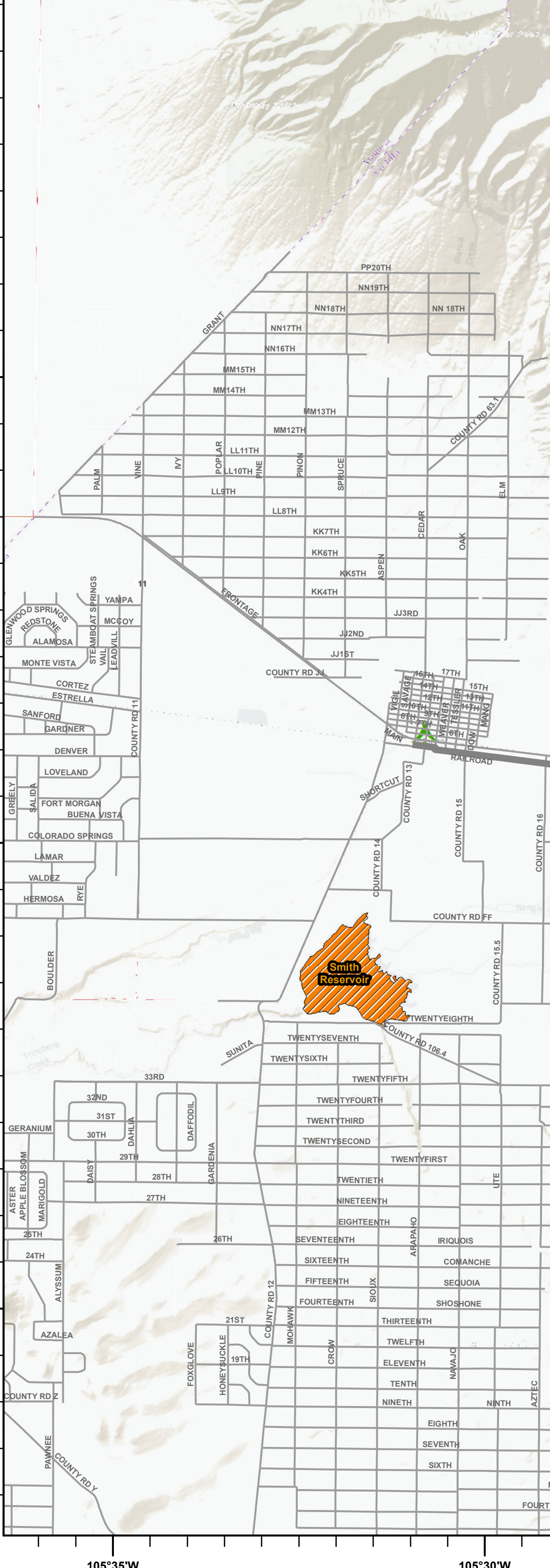
Air Operations

CO-CTX-1266
Spring Creek
NAD 83
07/05/2018
Approx 103,657 acres
as of 1430 7/5/2018



- ▲ Landmarks
- Camp
- ◆ Dip Site
- ⊕ Helibase
- Helispot
- Hot Spot
- ⊕ Incident Command Post
- ⊕ Internet Access
- ⊕ Repeater
- ⊕ Safety Zone
- ⊕ Water Source
- ⊕ Water Tank
- ⊕ Division Break
- ⊕ Branch Break
- ▲ Land Mobile Broadcast Towers
- ▲ Land Mobile Commercial Transmission Towers
- ▲ FM Transmission Towers
- ▲ Cellular Towers
- ▲ Antenna Structure Registrars
- ⊕ Hospitals
- ⊕ Uncontrolled Fire Edge
- ⊕ Completed Line
- ⊕ Completed Dozer Line
- ⊕ Completed Hand Line
- ⊕ Road as Completed Line
- ⊕ Access or Improved Road
- ⊕ Line Break Completed
- ⊕ Proposed Burnout
- ⊕ Proposed Dozer Line
- ⊕ Aerial Retardant Drop
- ⊕ Highlighted Manmade Feature
- ⊕ Other
- ⊕ TFR
- ⊕ Wildfire Daily Fire Perimeter
- ⊕ Spanish Peaks Wilderness Area
- ⊕ Aquatic Invasive Water Source

BRANCH I



| Type | Label | Comments | Latitude | Longitude |
|-----------------------|------------------------|-----------------------------------------|---------------|----------------|
| Camp | Spike | <Null> | 37° 30.299' N | 105° 0.443' W |
| Dip Site | Montez Reservoir | Trees on all sides of Reservoir | 37° 39.205' N | 105° 28.361' W |
| Dip Site | Forbes Dip | <Null> | 37° 26.843' N | 105° 11.028' W |
| Dip Site | Middle Creek Dip | <Null> | 37° 30.702' N | 105° 4.135' W |
| Dip Site | Wilson Reservoir | <Null> | 37° 41.786' N | 105° 24.496' W |
| Dip Site | <Null> | <Null> | 37° 34.348' N | 105° 15.878' W |
| Dip Site | <Null> | <Null> | 37° 38.880' N | 105° 11.980' W |
| Dip Site | <Null> | <Null> | 37° 38.540' N | 105° 8.310' W |
| Dip Site | Creager Reservoir | Utility lines on west side running N-S | 37° 50.643' N | 105° 20.484' W |
| Dip Site | City Lake | <Null> | 37° 35.766' N | 104° 51.392' W |
| Dip Site | Mobile Retardant Plant | Mobile retardant plant | 37° 31.486' N | 105° 0.047' W |
| Dip Site | North Lake | <Null> | 37° 29.649' N | 105° 0.267' W |
| Dip Site | Baker Creek Pond | <Null> | 37° 20.960' N | 105° 7.630' W |
| Dip Site | Mallard Pond | <Null> | 37° 33.562' N | 105° 6.628' W |
| Dip Site | Farchiol Pond | <Null> | 37° 20.454' N | 105° 5.674' W |
| Dip Site | Orlando Reservoir | <Null> | 37° 46.662' N | 104° 48.209' W |
| Dip Site | Maria Lake | <Null> | 37° 40.565' N | 104° 40.807' W |
| Dip Site | Horseshoe Lake | <Null> | 37° 36.564' N | 104° 50.808' W |
| Dip Site | Martin Lake | <Null> | 37° 36.619' N | 104° 50.130' W |
| Helibase | <Null> | <Null> | 37° 27.807' N | 105° 24.380' W |
| Helibase | La Veta | <Null> | 37° 31.429' N | 105° 0.556' W |
| Helispot | H-12 | <Null> | 37° 33.186' N | 105° 13.325' W |
| Helispot | H-11 | <Null> | 37° 34.779' N | 105° 13.032' W |
| Helispot | H-32 | <Null> | 37° 34.311' N | 105° 10.234' W |
| Helispot | Yellow Pine Helispot | Proposed helispot for DIV K and Cuchara | 37° 22.960' N | 105° 5.776' W |
| Helispot | Cuchara | <Null> | 37° 21.011' N | 105° 7.228' W |
| Helispot | H-90 | <Null> | 37° 40.306' N | 105° 7.067' W |
| Helispot | H-51 | <Null> | 37° 26.383' N | 105° 15.436' W |
| Helispot | H-61 | <Null> | 37° 24.218' N | 105° 4.590' W |
| Incident Command Post | <Null> | <Null> | 37° 25.879' N | 105° 27.383' W |
| Repeater | Cmd 1 | <Null> | 37° 34.867' N | 105° 13.000' W |
| Repeater | Cmd 2 | <Null> | 37° 22.525' N | 105° 10.140' W |
| Repeater | Cmd 7 | <Null> | 37° 24.584' N | 104° 56.445' W |
| Repeater | Cmd 8 | <Null> | 37° 46.328' N | 105° 1.32' W |

Esri, HERE, Garmin, © OpenStreetMap contributors, and the GIS user community, Sources: Esri, USGS, NOAA, Sources: Esri, Garmin, USGS, NPS