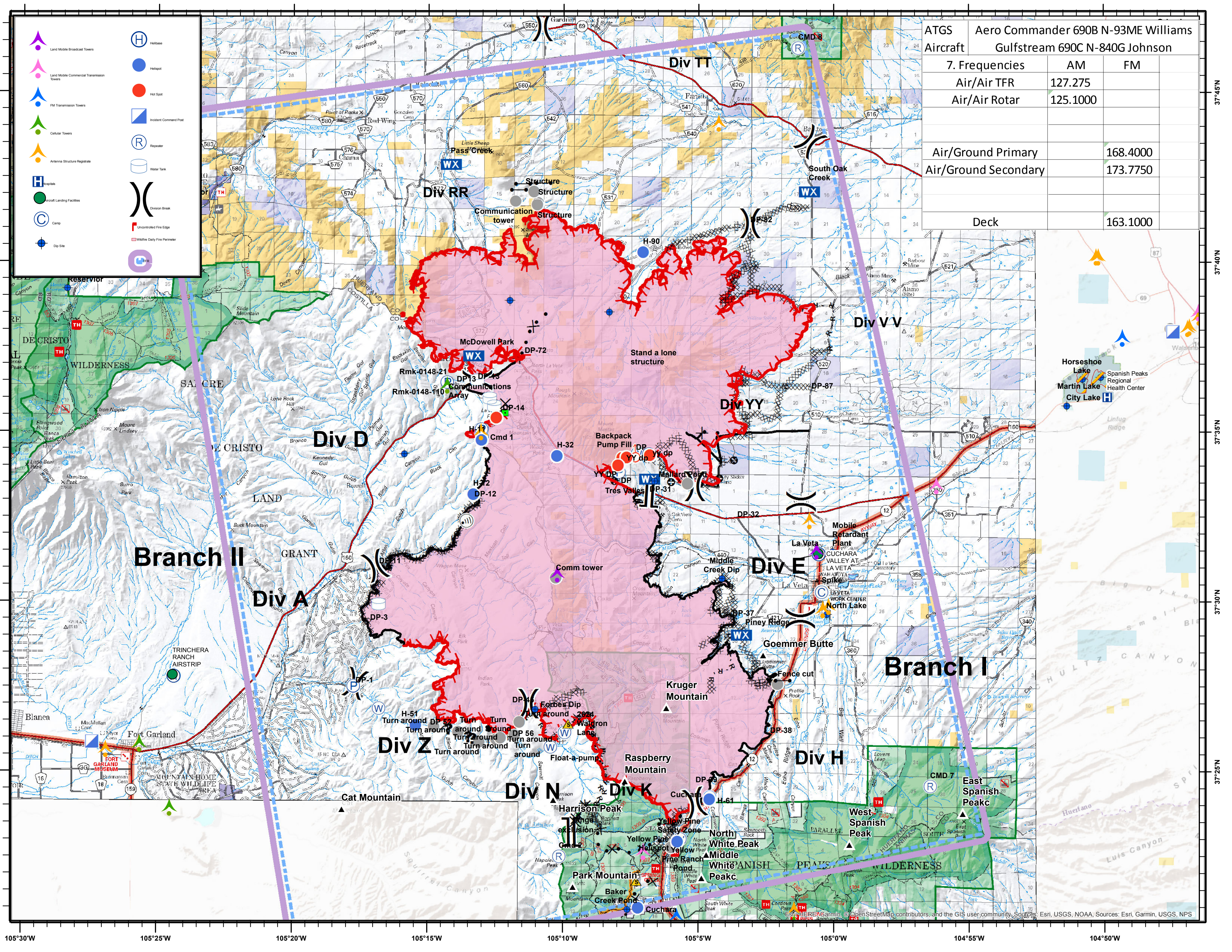


- Land Mobile Broadcast Towers
- Land Mobile Commercial Transmission Towers
- FM Transmission Towers
- Cellular Towers
- Antenna Structure Registrars
- Hospital
- Aircraft Landing Facilities
- Camp
- Dip Site
- Helibase
- Helipod
- Hot Spot
- Incident Command Post
- Repeater
- Water Tank
- Division Break
- Uncontrolled Fire Edge
- Wildfire Daily Fire Perimeter
- TFR

ATGS Aircraft	Aero Commander 690B N-93ME Williams	
	Gulfstream 690C N-840G Johnson	
7. Frequencies	AM	FM
Air/Air TFR	127.275	
Air/Air Rotar	125.1000	
Air/Ground Primary		168.4000
Air/Ground Secondary		173.7750
Deck		163.1000



Esri, HERE, Garmin, © OpenStreetMap contributors, and the GIS user community. Sources: Esri, USGS, NOAA. Sources: Esri, Garmin, USGS, NPS