

TRANSPORTATION

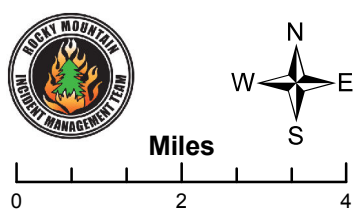
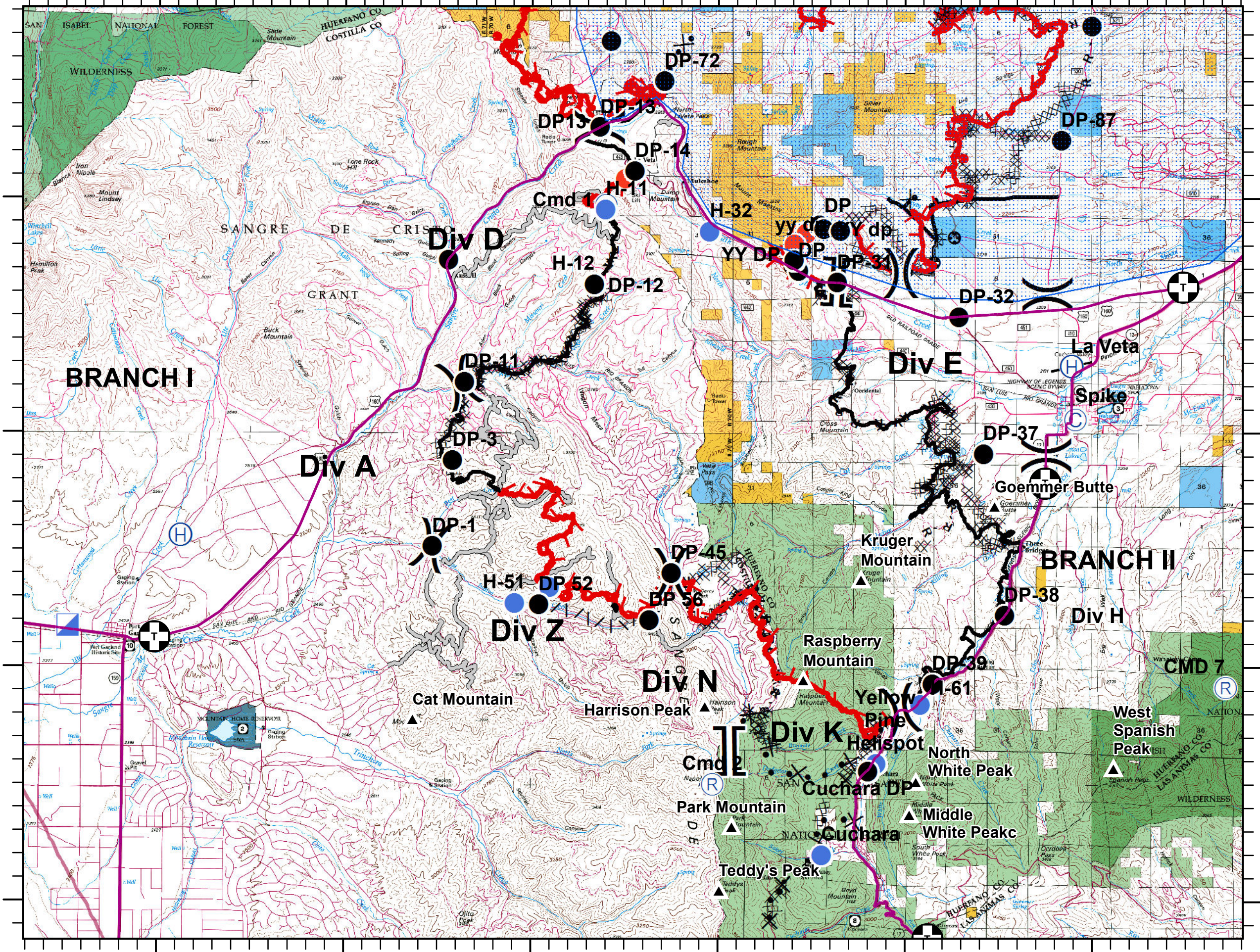
Spring Creek
CO-CTX1266

NAD 83

07/06/2018

Approx. 103,657 acres
as of 1430 07/05/2018

- ▲ Landmarks
- ⊕ Closures
- ⊙ Camp
- Drop Point
- ⊙ Helibase
- Helispot
- Hot Spot
- ▣ Incident Command Post
- ⊙ Repeater
- ⌋ Division Break
- ⌋ Branch Break
- ▬ Uncontrolled Fire Edge
- ▬ Completed Line
- ▬ Completed Dozer Line
- H - Completed Hand Line
- R - Road as Completed Line
- ▬ Access or Improved Road
- ▬ Line Break Completed
- ▬ Proposed Burnout
- ⊗ Proposed Dozer Line
- ◇ Aerial Retardant Drop
- ⋯ Highlighted Manmade Feature
- ⊕ Other
- ▣ TeamBlue



S. Wempen
7/5/2018
2039 hrs

105°25'W 105°20'W 105°15'W 105°10'W 105°5'W 105°0'W

37°35'N 37°30'N 37°25'N 37°20'N