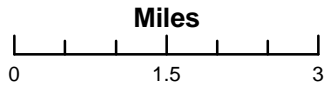
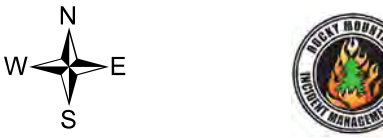


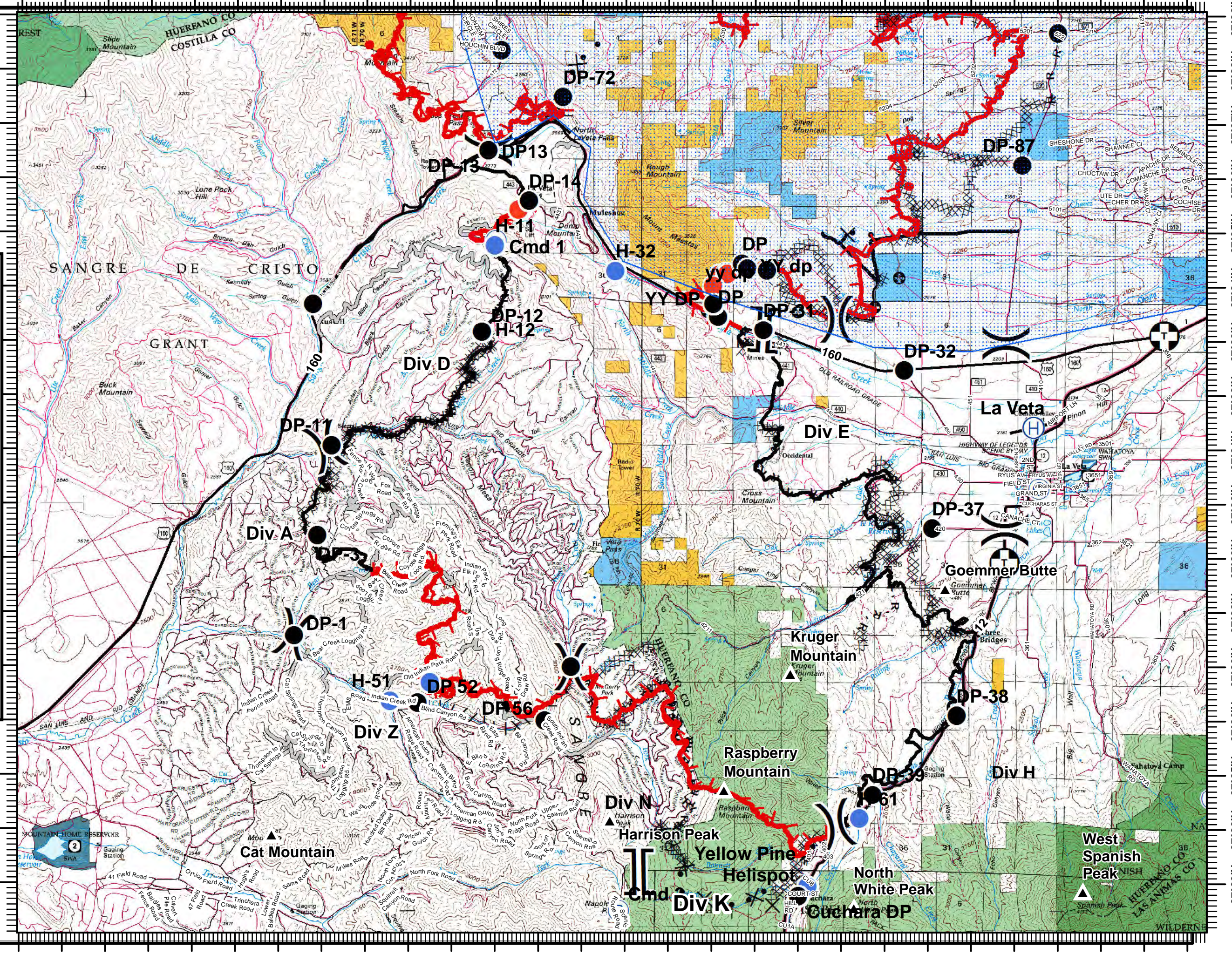
Transportation

CO-CTX1266
Spring Creek
NAD 83
07/06/2018
Approx 103,657 acres
as of 1430 07/05/2018

▲ Landmarks	Uncontrolled Fire Edge
⊕ Closures	Completed Line
Ⓢ Camp	Completed Dozer Line
● Drop Point	H - Completed Hand Line
Ⓜ Helibase	R - Road as Completed Line
● Helispot	Access or Improved Road
● Hot Spot	Line Break Completed
Ⓡ Repeater	Proposed Burnout
Ⓢ Division Break	Proposed Dozer Line
Ⓢ Branch Break	Aerial Retardant Drop
	Highlighted Manmade Feature
	Other
	Team Blue



S. Wempen
 7/5/2018
 2037 hrs



105°23'W 105°21'W 105°19'W 105°17'W 105°15'W 105°13'W 105°11'W 105°8'W 105°7'W 105°5'W 105°3'W 105°1'W 104°59'W 104°56'W

37°23'N 37°23'N 37°25'N 37°26'N 37°26'N 37°28'N 37°28'N 37°29'N 37°30'N 37°31'N 37°32'N 37°33'N 37°34'N 37°35'N 37°36'N 37°37'N 37°38'N

TRANSPORTATION

Spring Creek
CO-CTX1266

NAD 83

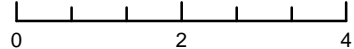
07/06/2018

Approx. 103,657 acres
as of 1430 07/05/2018

- ▲ Landmarks
- ⊕ Closures
- Ⓒ Camp
- Drop Point
- Ⓕ Helibase
- Helispot
- Hot Spot
- ▣ Incident Command Post
- Ⓔ Repeater
-) (Division Break
-]] Branch Break
- ▬ Uncontrolled Fire Edge
- ▬ Completed Line
- ▬ Completed Dozer Line
- H - Completed Hand Line
- R - Road as Completed Line
- ▬ Access or Improved Road
- ▬ Line Break Completed
- ▬ Proposed Burnout
- ⊗ Proposed Dozer Line
- ◇ Aerial Retardant Drop
- ⋯ Highlighted Manmade Feature
- ⊕ Other
- ▣ TeamBlue



Miles



S. Wempen
7/5/2018
2039 hrs

