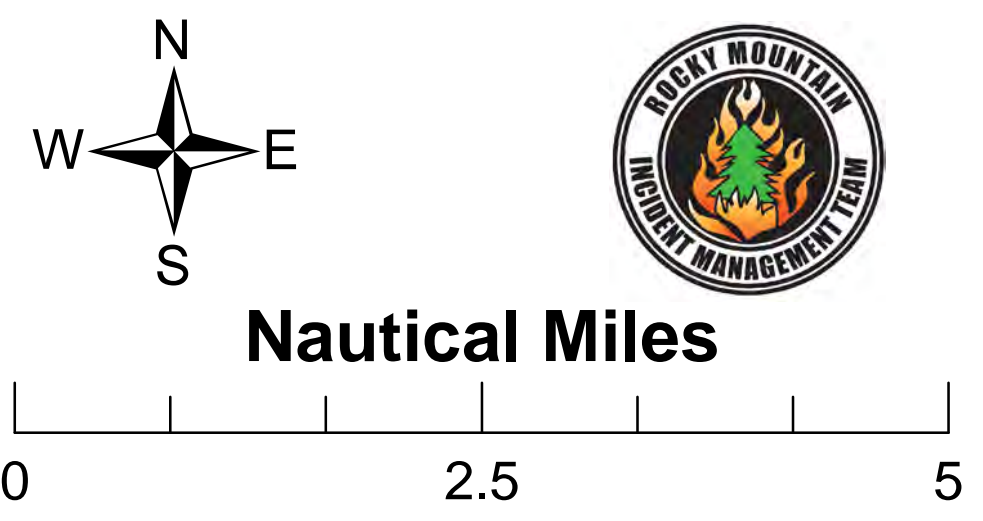


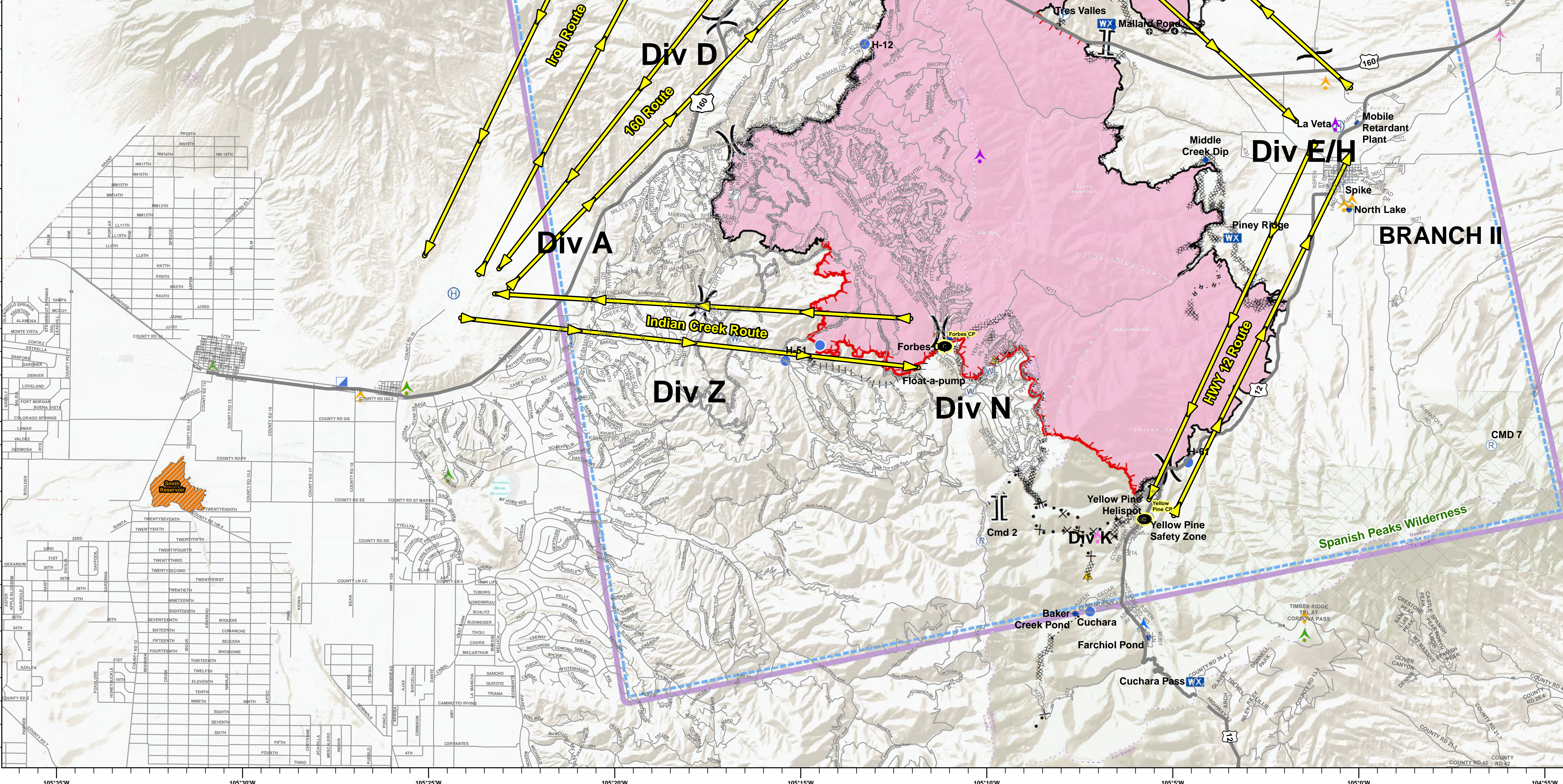
Air Operations

CO-CTX-1266
Spring Creek
NAD 83
07/07/2018
Approx 105,773 acres
as of 1617 7/6/2018



- Check Points
- Air_Routes
- Camp
- Dip Site
- Helibase
- Helispot
- Incident Command Post
- Landmark
- Mobile Weather Unit
- Pump
- Repeater
- Safety Zone
- Water Source
- Water Tank
- Division Break
- Branch Break
- Land Mobile Broadcast Towers
- Land Mobile Commercial Transmission Towers
- FM Transmission Towers
- Cellular Towers
- Antenna Structure Registrars
- Hospitals
- Uncontrolled Fire Edge
- Completed Line
- Completed Dozer Line
- Completed Hand Line
- Road as Completed Line
- Access or Improved Road
- MWW Line Break Completed
- Proposed Burnout
- Proposed Dozer Line
- Aerial Retardant Drop
- Highlighted Manmade Feature
- Other
- TFR
- Wildfire Daily Fire Perimeter
- Spanish Peaks Wilderness Area
- Aquatic Invasive Water Source

BRANCH I



BRANCH II

Type	Label	Comments	Latitude	Longitude
Camp	Spike	<Null>	37° 30.299' N	105° 0.443' W
Dip Site	Montez Reservoir	Trees on all sides of Reservoir	37° 39.205' N	105° 28.361' W
Dip Site	Forbes Dip	<Null>	37° 26.843' N	105° 11.028' W
Dip Site	Middle Creek Dip	<Null>	37° 30.702' N	105° 4.135' W
Dip Site	Wilson Reservoir	<Null>	37° 41.786' N	105° 24.496' W
Dip Site	<Null>	<Null>	37° 34.348' N	105° 15.878' W
Dip Site	<Null>	<Null>	37° 38.880' N	105° 11.980' W
Dip Site	<Null>	<Null>	37° 38.540' N	105° 8.310' W
Dip Site	Creager Reservoir	Utility lines on west side running N-S	37° 50.643' N	105° 20.484' W
Dip Site	City Lake	<Null>	37° 35.766' N	104° 51.392' W
Dip Site	Retardant Plant	Mobile retardant plant	37° 31.486' N	105° 0.047' W
Dip Site	North Lake	<Null>	37° 29.649' N	105° 0.267' W
Dip Site	Baker Creek Pond	<Null>	37° 20.960' N	105° 7.630' W
Dip Site	Mallard Pond	<Null>	37° 33.562' N	105° 6.628' W
Dip Site	Farchiol Pond	<Null>	37° 20.454' N	105° 5.674' W
Dip Site	Orlando Reservoir	<Null>	37° 46.662' N	104° 48.209' W
Dip Site	Maria Lake	<Null>	37° 40.565' N	104° 40.807' W
Dip Site	Horseshoe Lake	<Null>	37° 36.564' N	104° 50.808' W
Dip Site	Martin Lake	<Null>	37° 36.619' N	104° 50.130' W
Helibase	<Null>	<Null>	37° 27.807' N	105° 24.380' W
Helibase	La Veta	<Null>	37° 31.429' N	105° 0.556' W
Helispot	H-12	<Null>	37° 33.186' N	105° 13.325' W
Helispot	H-11	<Null>	37° 34.779' N	105° 13.032' W
Helispot	H-32	<Null>	37° 34.311' N	105° 10.234' W
Helispot	Yellow Pine Helispot	Proposed helispot for DIV K and Cuchara	37° 22.960' N	105° 5.776' W
Helispot	Cuchara	<Null>	37° 21.011' N	105° 7.228' W
Helispot	H-90	<Null>	37° 40.306' N	105° 7.067' W
Helispot	H-51	<Null>	37° 26.383' N	105° 15.436' W
Helispot	H-61	<Null>	37° 24.218' N	105° 4.590' W
Incident Command Post	<Null>	<Null>	37° 25.879' N	105° 27.383' W
Repeater	Cmd 1	<Null>	37° 34.867' N	105° 13.000' W
Repeater	Cmd 2	<Null>	37° 22.525' N	105° 10.140' W
Repeater	Cmd 7	<Null>	37° 24.584' N	104° 56.445' W
Repeater	Cmd 8	<Null>	37° 46.328' N	105° 1.32' W

Esri, HERE, Garmin, © OpenStreetMap contributors, and the GIS user community. Sources: Esri, USGS, NOAA, Source: Esri, Garmin, USGS, NPS