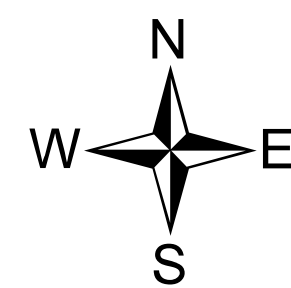


# Air Operations

**CO-CTX-1266  
Spring Creek  
NAD 83**

**07/08/2018**

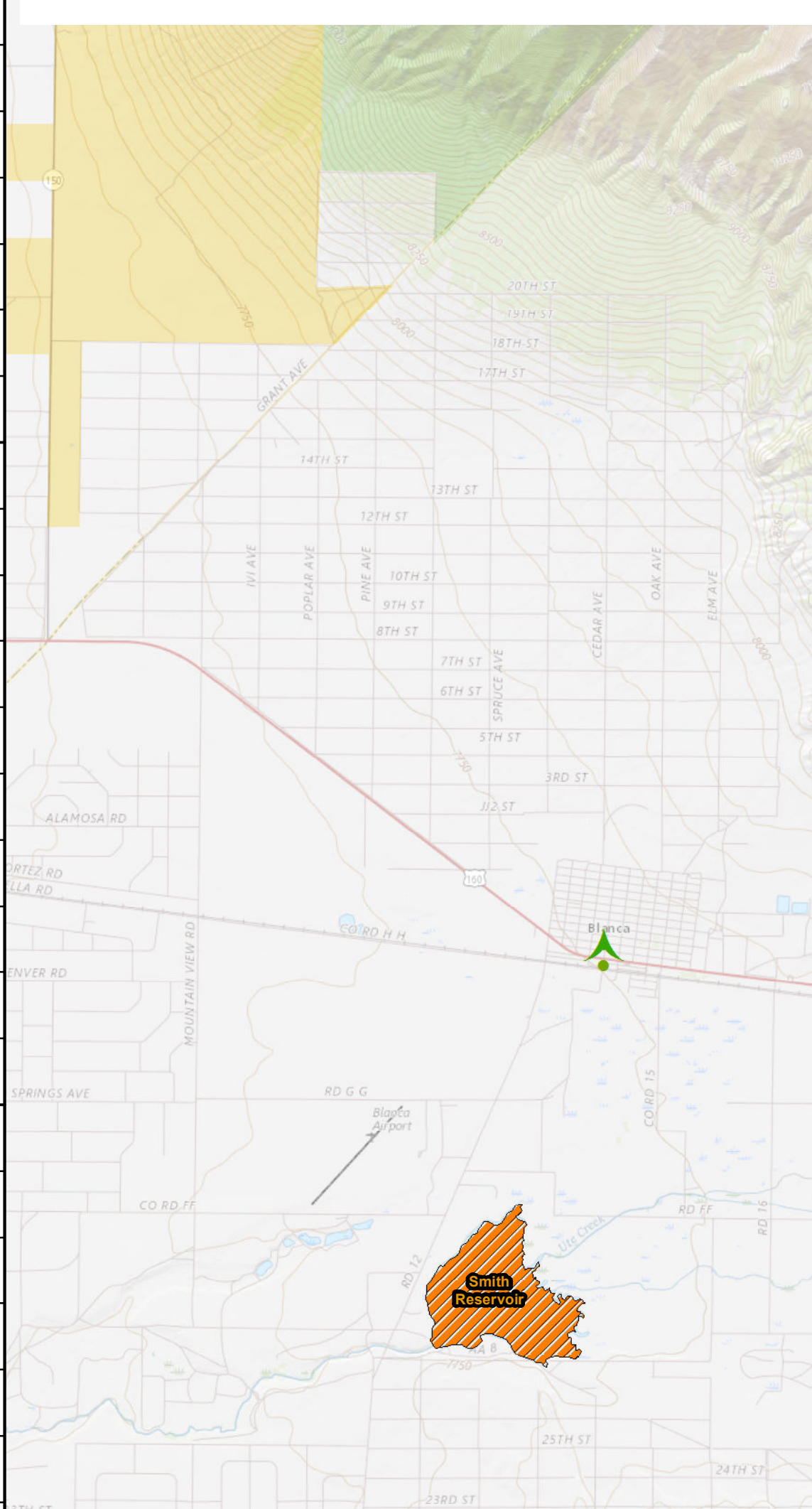
**Approx 106,985 acres  
as of 0316 7/7/2018**



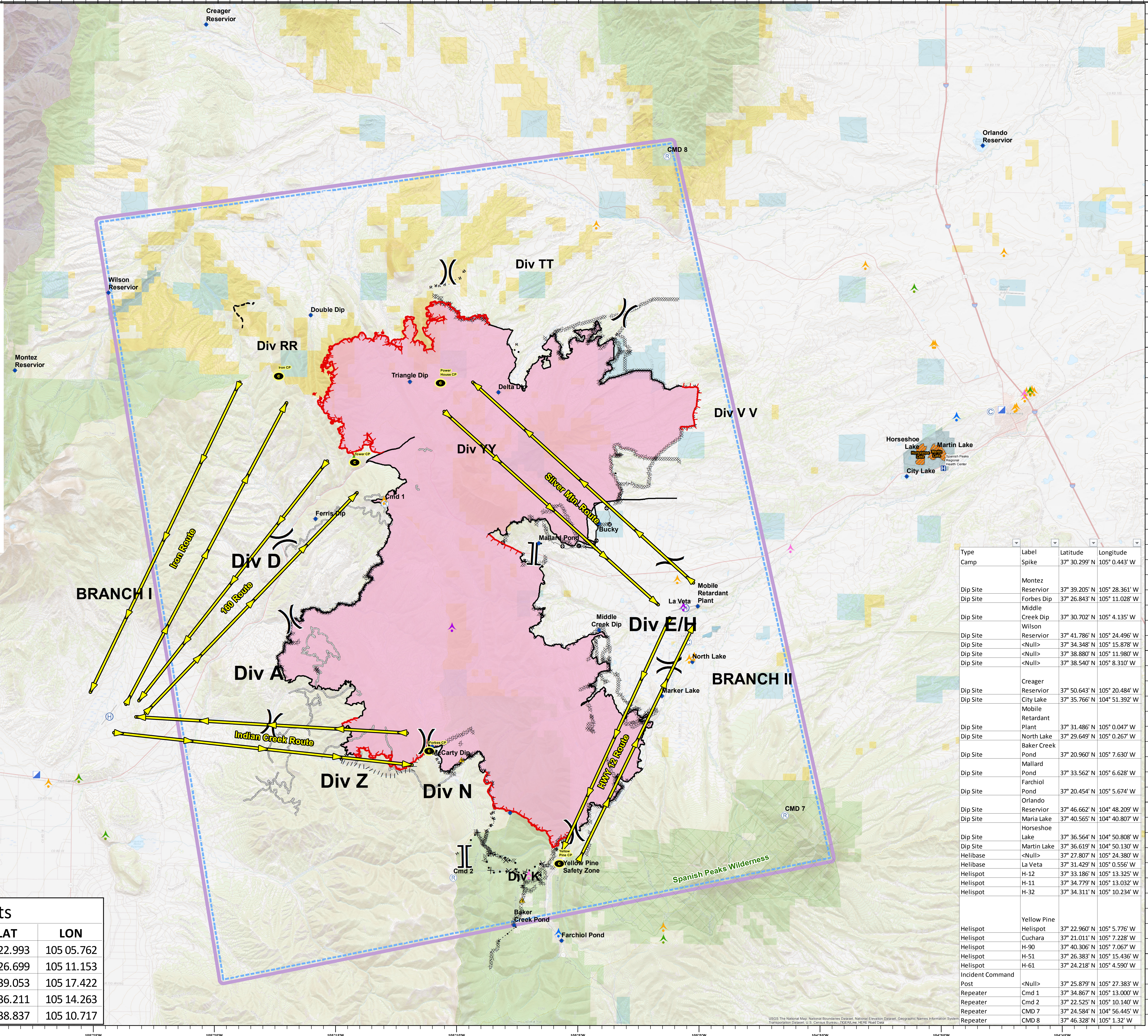
**Nautical Miles**

0 2.5 5

- Check Points
- Air\_Routes
- Land Mobile Broadcast Towers
- Land Mobile Commercial Transmission Towers
- FM Transmission Towers
- Cellular Towers
- Antenna Structure Registrars
- Hospitals
- Camp
- Dip Site
- Helibase
- Incident Command Post
- Repeater
- Safety Zone
- Division Break
- Branch Break
- Uncontrolled Fire Edge
- Completed Line
- Completed Dozer Line
- Completed Hand Line
- Road as Completed Line
- Access or Improved Road
- Line Break Completed
- Proposed Burnout
- Proposed Dozer Line
- Planned Fire Line
- Aerial Retardant Drop
- Highlighted Manmade Feature
- Other
- TFR
- Spanish Peaks Wilderness Area
- Aquatic Invasive Water Source
- Wildfire Daily Fire Perimeter



Check Points			
Name	Route	LAT	LON
Yellow Pine	Hwy 12	37 22.993	105 05.762
Forbes/McCarty	Indian Creek	37 26.699	105 11.153
Iron	Iron	37 39.053	105 17.422
Tower	160	37 36.211	105 14.263
Power House	Silver Mtn	37 38.837	105 10.717



Type	Label	Latitude	Longitude
Camp	Spike	37° 30.299' N	105° 0.443' W
Dip Site	Montez Reservoir	37° 39.205' N	105° 28.361' W
Dip Site	Forbes Dip	37° 26.843' N	105° 11.028' W
Dip Site	Middle Creek Dip	37° 30.702' N	105° 4.135' W
Dip Site	Wilson Reservoir	37° 41.786' N	105° 24.496' W
Dip Site	<Null>	37° 34.348' N	105° 15.878' W
Dip Site	<Null>	37° 38.880' N	105° 11.980' W
Dip Site	<Null>	37° 38.540' N	105° 8.310' W
Dip Site	Creager Reservoir	37° 50.643' N	105° 20.484' W
Dip Site	City Lake	37° 35.766' N	104° 51.392' W
Dip Site	Mobile Retardant Plant	37° 31.486' N	105° 0.047' W
Dip Site	North Lake	37° 29.649' N	105° 0.267' W
Dip Site	Baker Creek Pond	37° 20.960' N	105° 7.630' W
Dip Site	Mallard Pond	37° 33.562' N	105° 6.628' W
Dip Site	Farchiol Pond	37° 20.454' N	105° 5.674' W
Dip Site	Orlando Reservoir	37° 46.662' N	104° 48.209' W
Dip Site	Maria Lake	37° 40.565' N	104° 40.807' W
Dip Site	Horseshoe Lake	37° 36.564' N	104° 50.808' W
Dip Site	Martin Lake	37° 36.619' N	104° 50.130' W
Helibase	<Null>	37° 27.807' N	105° 24.380' W
Helibase	La Veta	37° 31.429' N	105° 0.556' W
Helispot	H-12	37° 33.186' N	105° 13.325' W
Helispot	H-11	37° 34.779' N	105° 13.032' W
Helispot	H-32	37° 34.311' N	105° 10.234' W
Helispot	Yellow Pine	37° 22.960' N	105° 5.776' W
Helispot	Cuchara	37° 21.011' N	105° 7.228' W
Helispot	H-90	37° 40.306' N	105° 7.067' W
Helispot	H-51	37° 26.383' N	105° 15.436' W
Helispot	H-61	37° 24.218' N	105° 4.590' W
Incident Command Post	<Null>	37° 25.879' N	105° 27.383' W
Repeater	Cmd 1	37° 34.867' N	105° 13.000' W
Repeater	Cmd 2	37° 22.525' N	105° 10.140' W
Repeater	CMD 7	37° 24.584' N	104° 56.445' W
Repeater	CMD 8	37° 46.328' N	105° 1.32' W

USGS The National Map, National Boundaries Dataset, National Elevation Dataset, Geographic Names Information System, Transportation Dataset, U.S. Census Bureau, TIGER/Line, HERE Road Data