

Air Operations

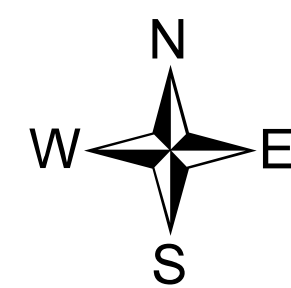
CO-CTX-1266

Spring Creek

NAD 83

07/09/2018

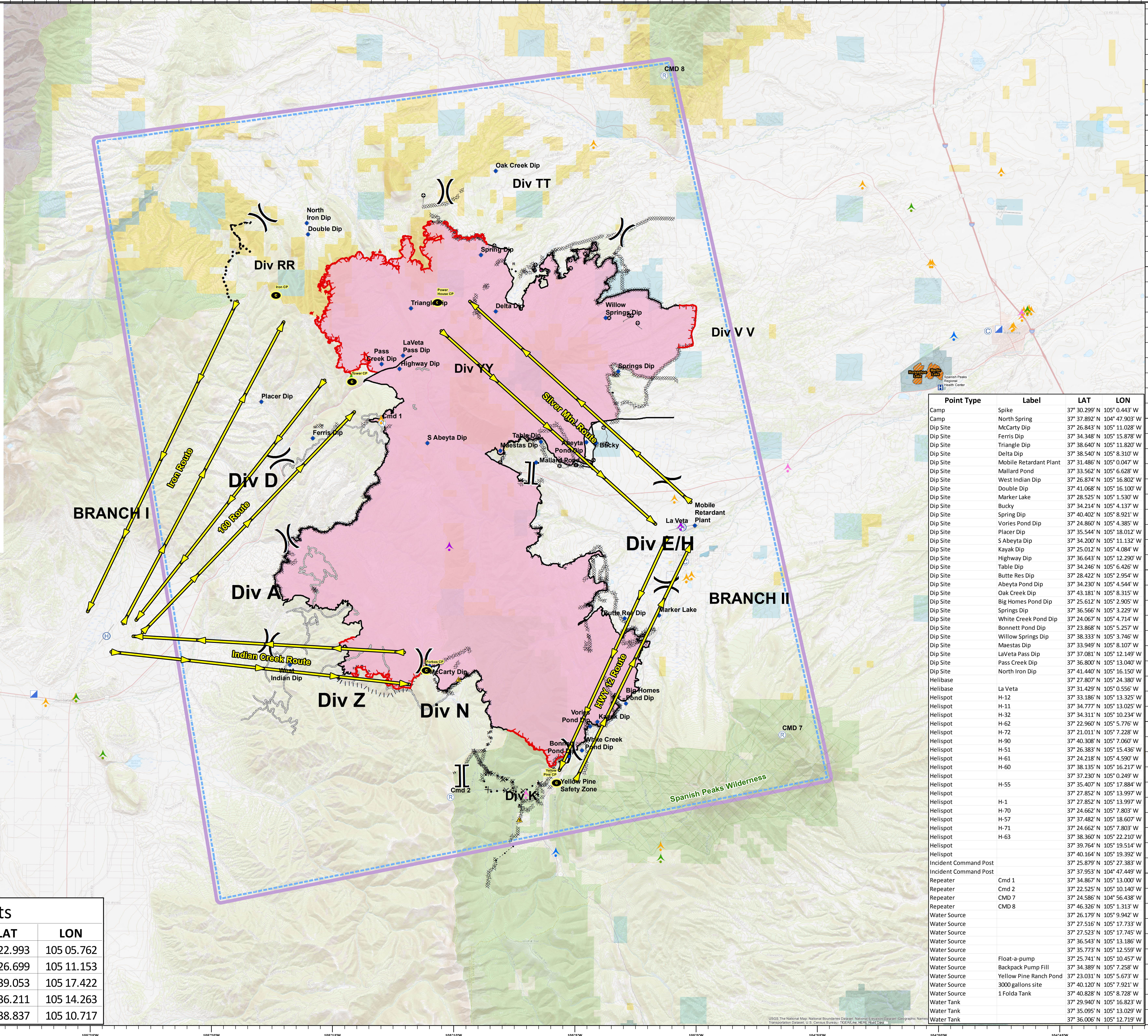
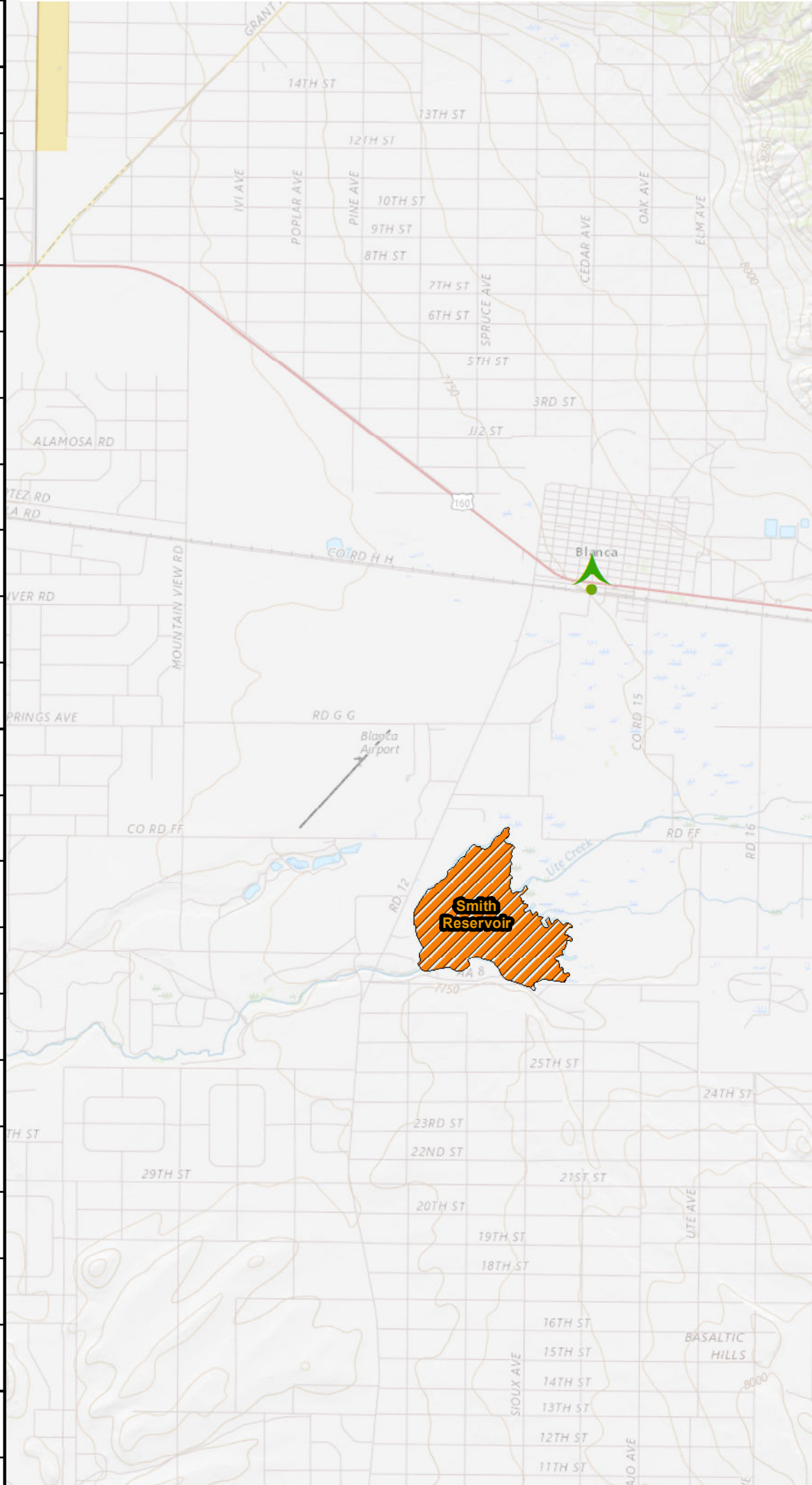
Approx 107,307 acres
as of 1542 7/8/2018



Nautical Miles

0 2.5 5

- Check Points
- Air_Routes
- Spanish Peaks Wilderness Area
- Aquatic Invasive Water Source
- Land Mobile Broadcast Towers
- Land Mobile Commercial Transmission Towers
- FM Transmission Towers
- Cellular Towers
- Antenna Structure Registrare
- Hospitals
- Camp
- Dip Site
- Helibase
- Incident Command Post
- Repeater
- Safety Zone
- Division Break
- Branch Break
- Uncontrolled Fire Edge
- Completed Line
- Completed Dozer Line
- Completed Hand Line
- Road as Completed Line
- Access or Improved Road
- Line Break Completed
- Proposed Burnout
- Proposed Dozer Line
- Planned Fire Line
- Planned Secondary Line
- Highlighted Manmade Feature
- Other
- Unknown
- Wildfire Daily Fire Perimeter
- TFR



Point Type	Label	LAT	LOX
Camp	Spike	37° 30.299' N	105° 0.443' W
Camp	North Spring	37° 37.892' N	104° 47.903' W
Dip Site	McCarty Dip	37° 26.843' N	105° 11.028' W
Dip Site	Ferris Dip	37° 34.348' N	105° 15.878' W
Dip Site	Triangle Dip	37° 38.640' N	105° 11.820' W
Dip Site	Delta Dip	37° 38.540' N	105° 8.310' W
Dip Site	Mobile Retardant Plant	37° 31.486' N	105° 0.047' W
Dip Site	Mallard Pond	37° 33.562' N	105° 6.628' W
Dip Site	West Indian Dip	37° 26.874' N	105° 16.802' W
Dip Site	Double Dip	37° 41.068' N	105° 16.100' W
Dip Site	Marker Lake	37° 28.525' N	105° 1.530' W
Dip Site	Bucky	37° 34.214' N	105° 4.137' W
Dip Site	Spring Dip	37° 40.402' N	105° 8.921' W
Dip Site	Vories Pond Dip	37° 24.860' N	105° 4.385' W
Dip Site	Placer Dip	37° 35.544' N	105° 18.012' W
Dip Site	S Abeyta Dip	37° 34.200' N	105° 11.132' W
Dip Site	Kayak Dip	37° 25.012' N	105° 4.084' W
Dip Site	Highway Dip	37° 36.643' N	105° 12.290' W
Dip Site	Table Dip	37° 34.246' N	105° 6.426' W
Dip Site	Butte Res Dip	37° 28.422' N	105° 2.954' W
Dip Site	Abeyta Pond Dip	37° 34.230' N	105° 4.544' W
Dip Site	Oak Creek Dip	37° 43.181' N	105° 8.315' W
Dip Site	Big Homes Pond Dip	37° 25.612' N	105° 2.905' W
Dip Site	Springs Dip	37° 36.566' N	105° 3.229' W
Dip Site	White Creek Pond Dip	37° 24.067' N	105° 4.714' W
Dip Site	Bonnett Pond Dip	37° 23.868' N	105° 5.257' W
Dip Site	Willow Springs Dip	37° 38.333' N	105° 3.746' W
Dip Site	Maestas Dip	37° 33.949' N	105° 8.107' W
Dip Site	LaVeta Pass Dip	37° 37.081' N	105° 12.149' W
Dip Site	Pass Creek Dip	37° 36.800' N	105° 13.040' W
Dip Site	North Iron Dip	37° 41.440' N	105° 16.150' W
Helibase	La Veta	37° 27.807' N	105° 24.380' W
Helibase	H-12	37° 31.429' N	105° 0.556' W
Helibase	H-11	37° 33.186' N	105° 13.325' W
Helibase	H-32	37° 34.777' N	105° 13.025' W
Helibase	H-62	37° 34.311' N	105° 10.234' W
Helibase	H-72	37° 22.960' N	105° 5.776' W
Helibase	H-90	37° 21.011' N	105° 7.228' W
Helibase	H-51	37° 40.308' N	105° 7.060' W
Helibase	H-61	37° 26.383' N	105° 15.436' W
Helibase	H-60	37° 24.218' N	105° 4.590' W
Helibase	H-55	37° 38.135' N	105° 16.217' W
Helibase	H-1	37° 37.230' N	105° 0.249' W
Helibase	H-70	37° 35.407' N	105° 17.884' W
Helibase	H-57	37° 27.852' N	105° 13.997' W
Helibase	H-71	37° 24.662' N	105° 7.803' W
Helibase	H-63	37° 37.482' N	105° 18.607' W
Helibase	H-63	37° 24.662' N	105° 7.803' W
Helibase	H-63	37° 38.360' N	105° 22.210' W
Helibase	H-63	37° 39.764' N	105° 19.514' W
Helibase	H-63	37° 40.164' N	105° 19.392' W
Incident Command Post		37° 25.879' N	105° 27.383' W
Incident Command Post		37° 37.953' N	104° 47.449' W
Repeater	Cmd 1	37° 34.867' N	105° 13.000' W
Repeater	Cmd 2	37° 22.525' N	105° 10.140' W
Repeater	CMD 7	37° 24.586' N	104° 56.438' W
Repeater	CMD 8	37° 46.326' N	105° 1.313' W
Water Source		37° 26.179' N	105° 9.942' W
Water Source		37° 27.516' N	105° 17.733' W
Water Source		37° 27.523' N	105° 17.745' W
Water Source		37° 36.543' N	105° 13.186' W
Water Source		37° 35.773' N	105° 12.559' W
Water Source	Float-a-pump	37° 25.741' N	105° 10.457' W
Water Source	Backpack Pump Fill	37° 34.389' N	105° 7.258' W
Water Source	Yellow Pine Ranch Pond	37° 23.031' N	105° 5.673' W
Water Source	3000 gallons site	37° 40.120' N	105° 7.921' W
Water Source	1 Folda Tank	37° 40.828' N	105° 8.728' W
Water Tank		37° 29.940' N	105° 16.823' W
Water Tank		37° 35.095' N	105° 13.029' W
Water Tank		37° 36.006' N	105° 12.719' W

Check Points			
Name	Route	LAT	LOX
Yellow Pine	Hwy 12	37 22.993	105 05.762
Forbes/McCarty	Indian Creek	37 26.699	105 11.153
Iron	Iron	37 39.053	105 17.422
Tower	160	37 36.211	105 14.263
Power House	Silver Mtn	37 38.837	105 10.717

USGS The National Map, National Boundaries Dataset, National Elevation Dataset, Geographic Names Transportation Dataset, U.S. Census Bureau, TIGER/Line, NE, RE, Road Data