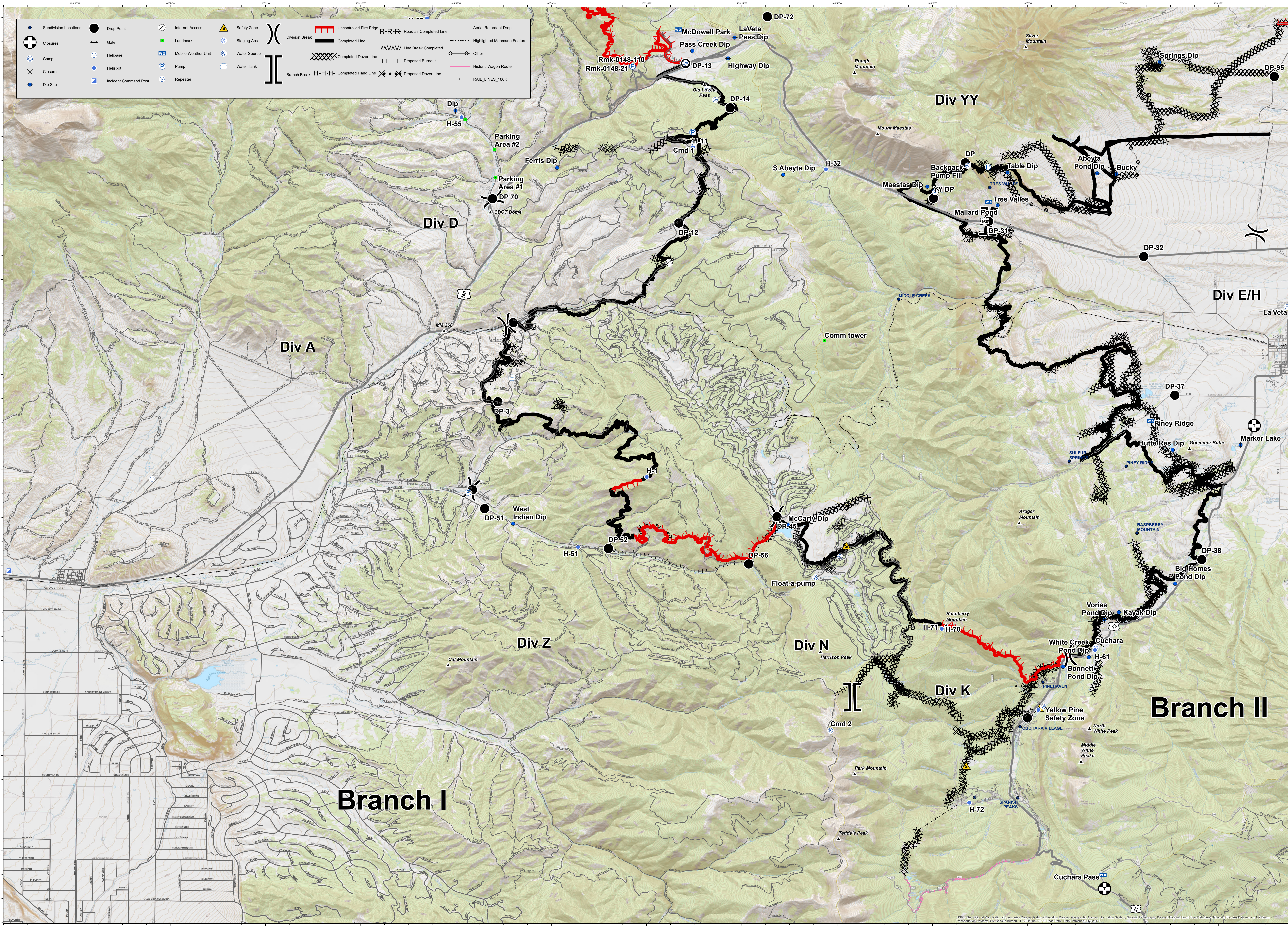


● Subdivision Locations	● Drop Point	Ⓜ Internet Access	⚠ Safety Zone	⎓ Division Break	▬ Uncontrolled Fire Edge	R-R-R Road as Completed Line	⬇ Aerial Retardant Drop
⊕ Closures	→ Gate	■ Landmark	Ⓜ Staging Area	▬ Completed Line	▬ Completed Dozer Line	▬ Line Break Completed	⬇ Highlighted Manmade Feature
Ⓜ Camp	Ⓜ Helibase	Ⓜ Mobile Weather Unit	Ⓜ Water Source	▬ Proposed Burnout	▬ Proposed Dozer Line	▬ Historic Wagon Route	⬇ Other
Ⓜ Closure	Ⓜ Helispot	Ⓜ Pump	Ⓜ Water Tank	▬ Branch Break	▬ Completed Hand Line	▬ RAIL_LINES_100K	
Ⓜ Dip Site	Ⓜ Incident Command Post	Ⓜ Repeater					



Branch I

Branch II

Spring Creek Fire - CO-CTX-1266 - Ground Support

July 8, 2018 - Day Shift
 Approx 107,307 acres as of 7/08/18 1542hrs

NAD 83 - UTM Zone 13
 G. Torres
 7/8/2018 - 2213 hrs

