









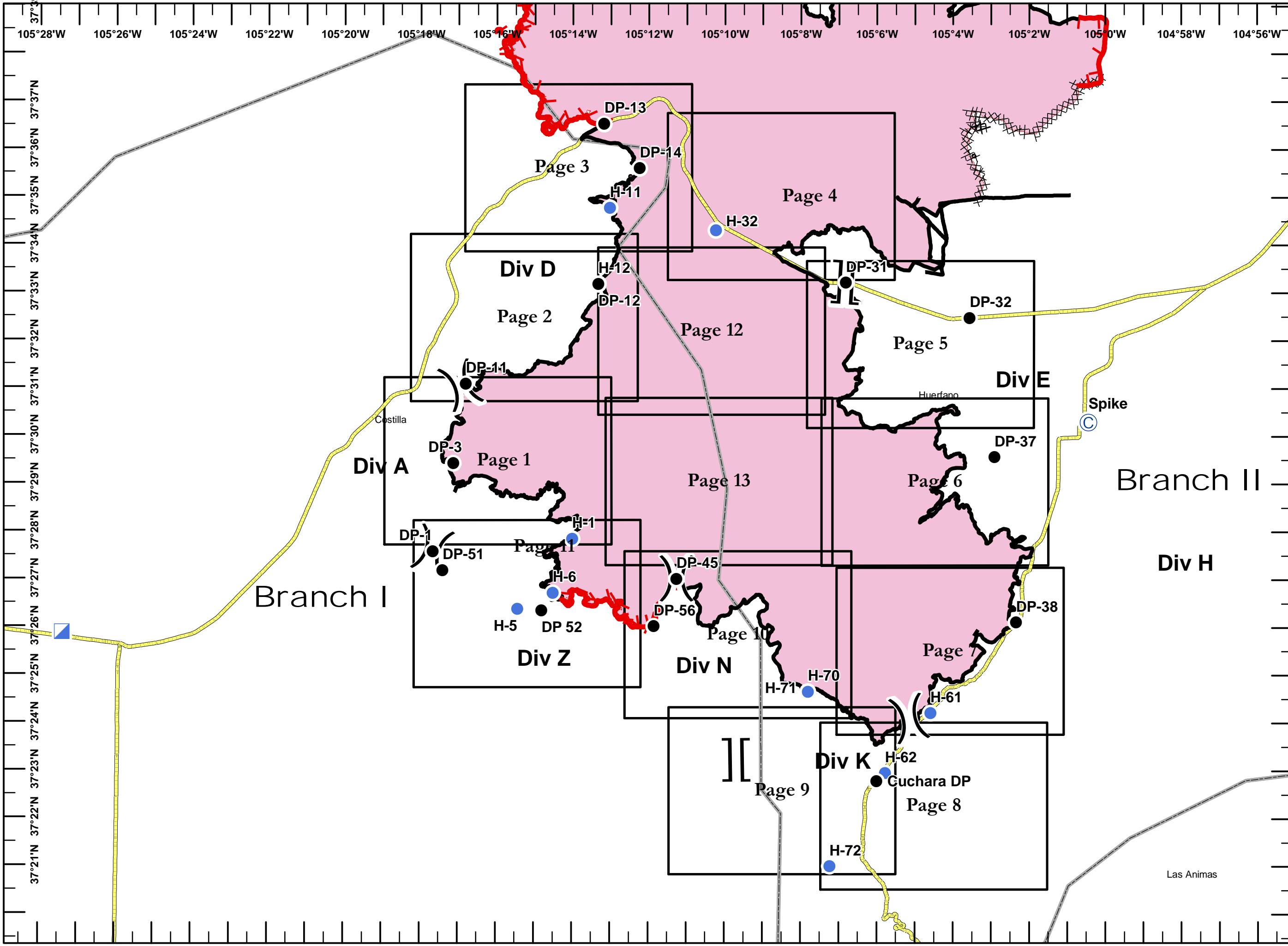
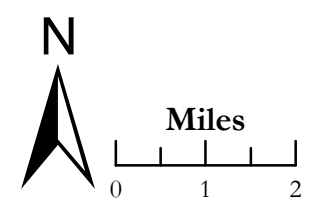


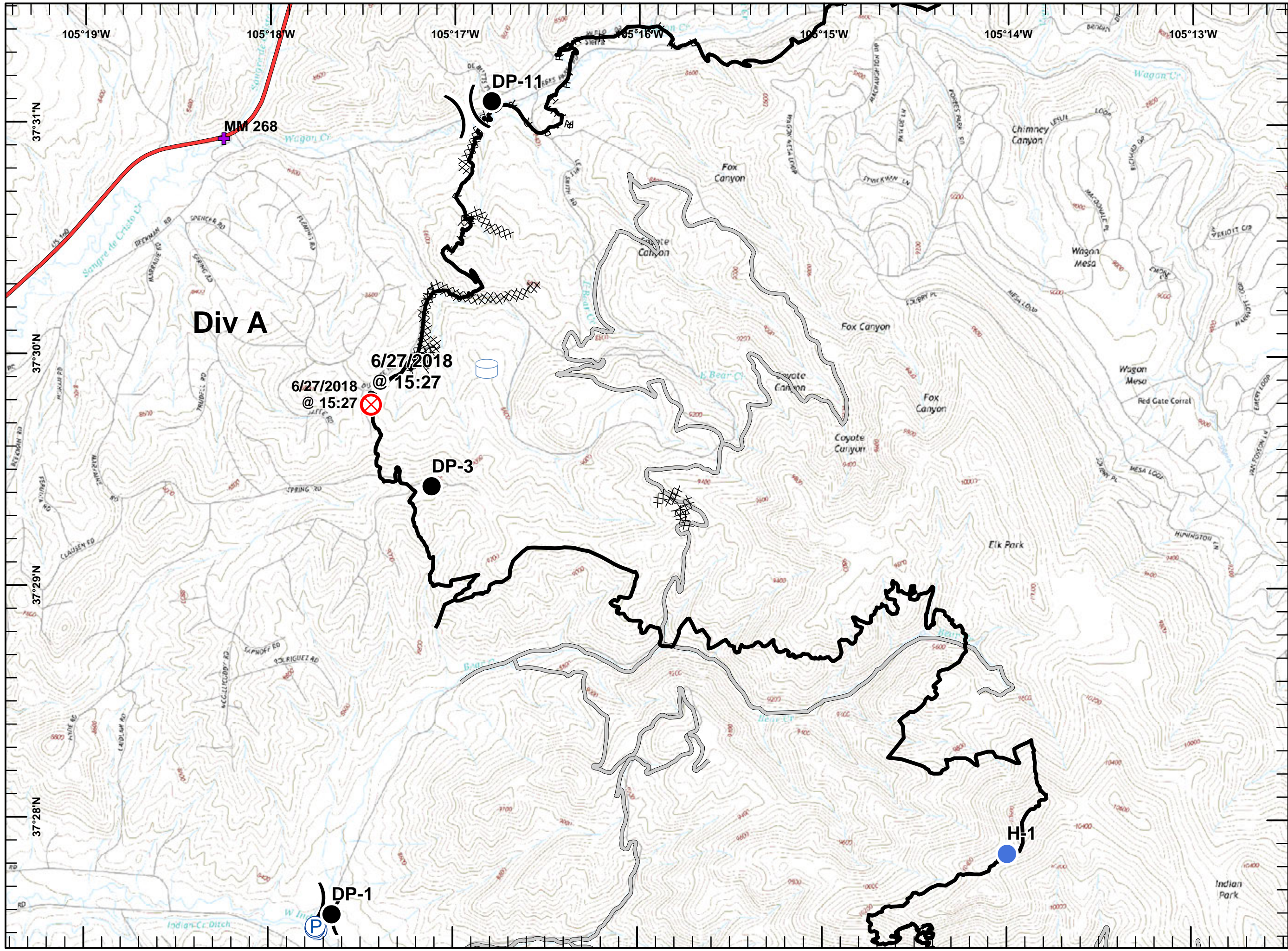
**Spring Creek Fire**  
**IAP Map**  
 COCTX-1266  
 July 11, 2018  
 Day Shift  
 Approx. 107,967 acres  
 as of 7/9/18 @ 1630 hrs  
 Datum: NAD 83  
 Index Map

**Legend - Select Features**

-  Uncontrolled Fire Edge
-  Completed Line
-  Completed Dozer Line
-  Camp
-  Drop Point
-  Helispot
-  Incident Command Post
-  Division Break
-  Branch Break
-  GridIndex\_IAP\_24K

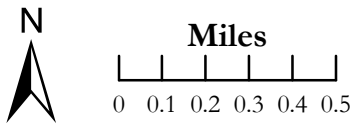


Spring Creek Fire  
 IAP Map  
 COCTX-1266  
 July 11, 2018  
 Day Shift  
 Approx. 107,967 acres  
 as of 7/9/18 @ 1630 hrs  
 Datum: NAD 83  
 Page 1 of 13  
 Br I - Div A



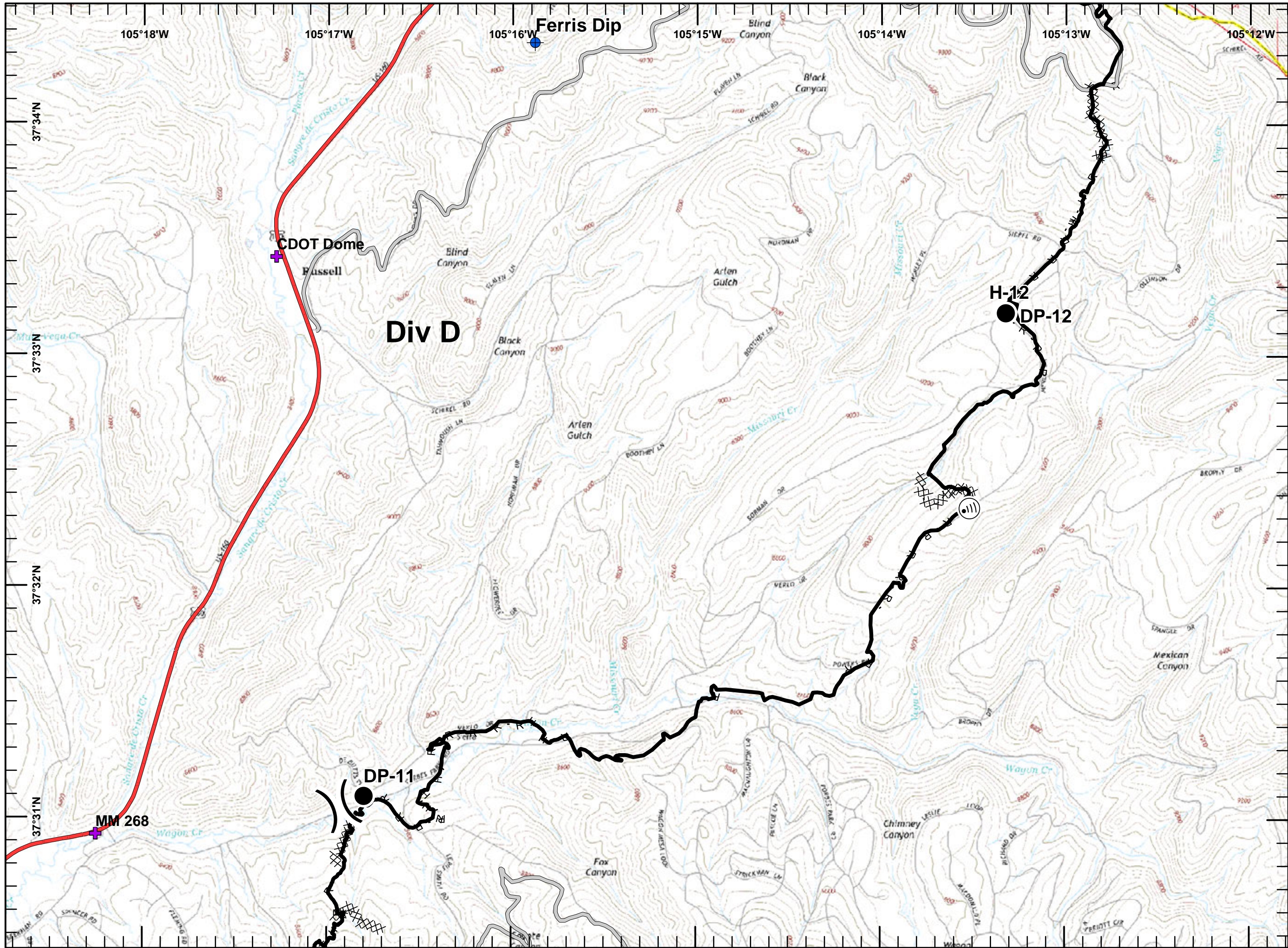
**Legend**

- Completed Line
- Completed Dozer Line
- Completed Hand Line
- Road as Completed Line
- Access or Improved Road
- SpringCreek\_Landmarks




DHammond  
 7/10/2018  
 2017

Spring Creek Fire  
 IAP Map  
 COCTX-1266  
 July 11, 2018  
 Day Shift  
 Approx. 107,967 acres  
 as of 7/9/18 @ 1630 hrs  
 Datum: NAD 83  
 Page 2 of 13  
 Br I - Div D



**Legend**

- Completed Line
- Completed Dozer Line
- Completed Hand Line
- Road as Completed Line
- Access or Improved Road
- SpringCreek\_Landmarks

N




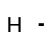



Miles  
 0 0.1 0.2 0.3 0.4 0.5


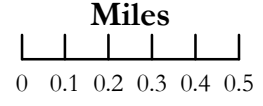
Rocky Mountain Fire District Management Team


DHammond  
 7/10/2018  
 2017

**Spring Creek Fire**  
**IAP Map**  
 COCTX-1266  
 July 11, 2018  
 Day Shift  
 Approx. 107,967 acres  
 as of 7/9/18 @ 1630 hrs  
 Datum: NAD 83  
 Page 3 of 13  
 Br I - Div D

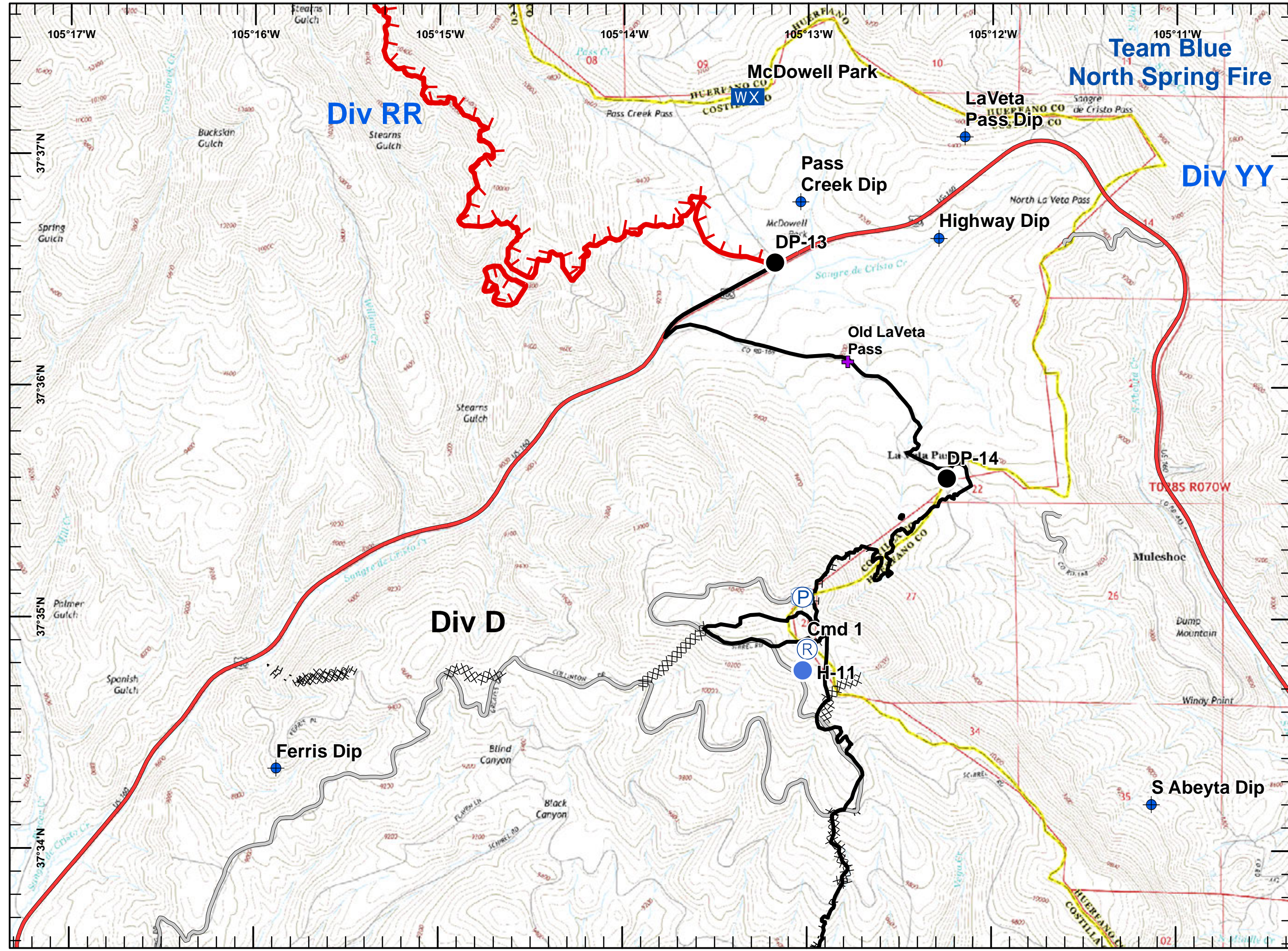
**Legend**

-  Uncontrolled Fire Edge
-  Completed Line
-  Completed Dozer Line
-  Completed Hand Line
-  Road as Completed Line
-  Access or Improved Road
-  SpringCreek\_Landmarks



 DHammond  
 7/10/2018  
 2017



**Team Blue**  
**North Spring Fire**  
**Div YY**

**Div RR**

**Div D**

McDowell Park

LaVeta Pass Dip

Pass Creek Dip

Highway Dip

DP-13

DP-14

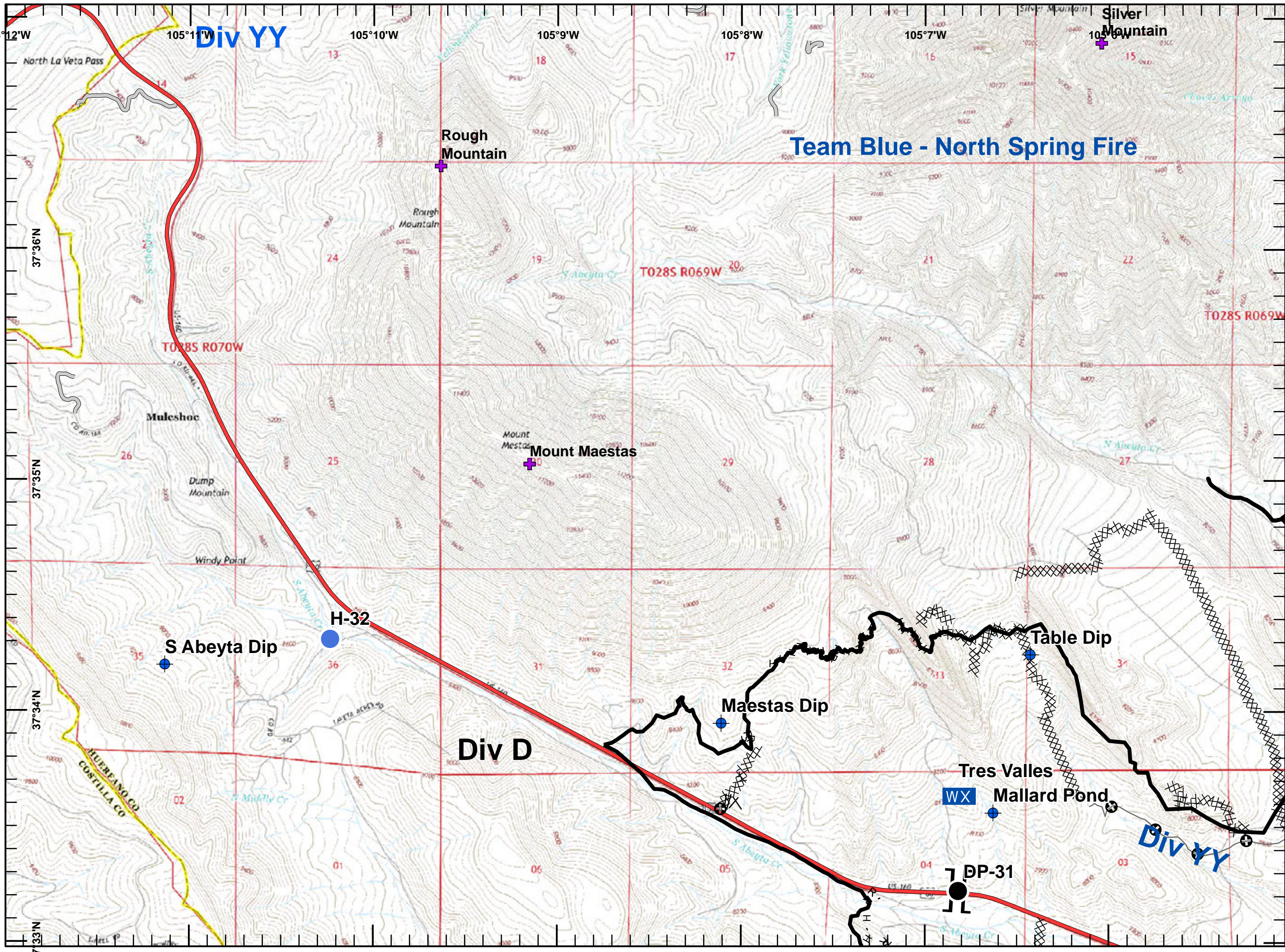
Cmd 1

H-11

Ferris Dip

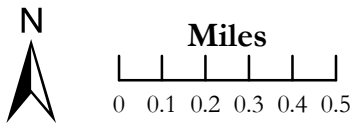
S Abeyta Dip

**Spring Creek Fire**  
**IAP Map**  
 COCTX-1266  
 July 11, 2018  
 Day Shift  
 Approx. 107,967 acres  
 as of 7/9/18 @ 1630 hrs  
 Datum: NAD 83  
 Page 4 of 13  
 Br I - Div D



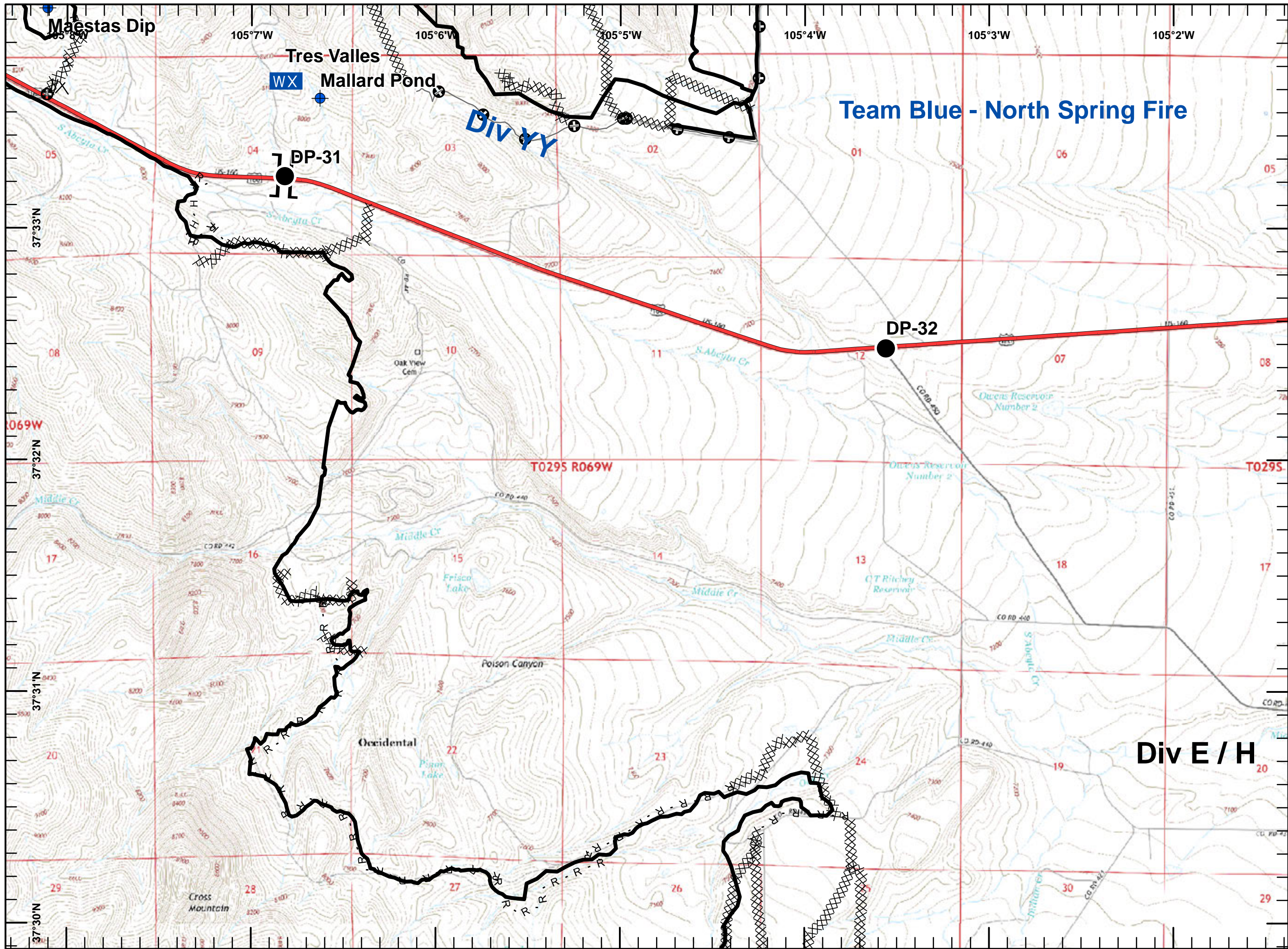
**Legend**

- Completed Line
- Completed Dozer Line
- Completed Hand Line
- Road as Completed Line
- Access or Improved Road
- Line Break Completed
- Aerial Retardant Drop
- Other
- SpringCreek\_Landmarks



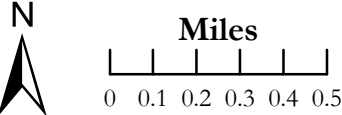
DHammond  
 7/10/2018  
 2017

Spring Creek Fire  
 IAP Map  
 COCTX-1266  
 July 11, 2018  
 Day Shift  
 Approx. 107,967 acres  
 as of 7/9/18 @ 1630 hrs  
 Datum: NAD 83  
 Page 5 of 13  
 Br II - Div E/H



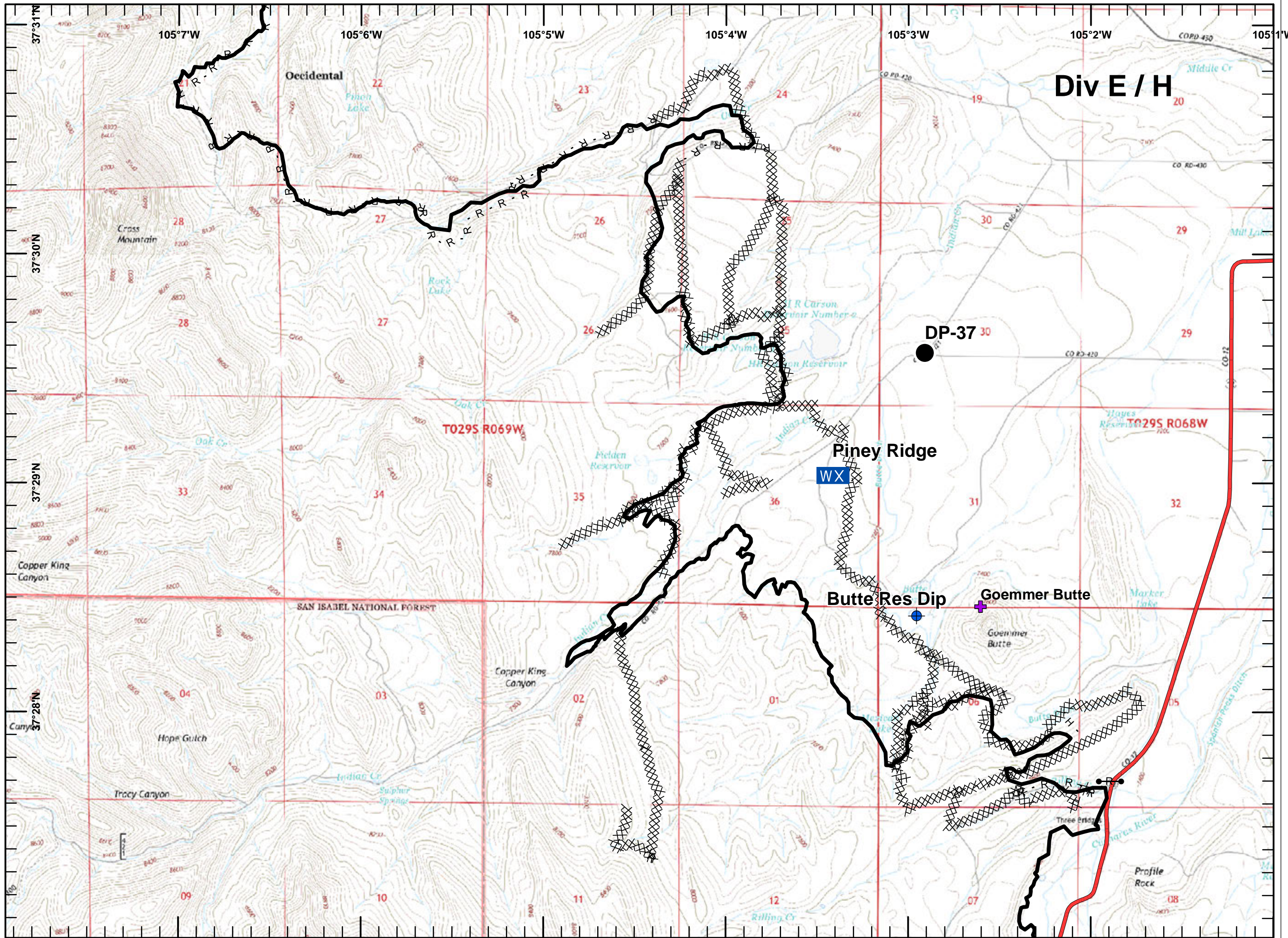
**Legend**

- Completed Line
- XXXX Completed Dozer Line
- H - Completed Hand Line
- R - Road as Completed Line
- ⌋ Line Break Completed
- ⊕ Other








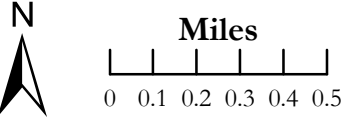
DHammond  
 7/10/2018  
 2017

**Spring Creek Fire**  
**IAP Map**  
 COCTX-1266  
 July 11, 2018  
 Day Shift  
 Approx. 107,967 acres  
 as of 7/9/18 @ 1630 hrs  
 Datum: NAD 83  
 Page 6 of 13  
 Br II - Div E/H



**Legend**






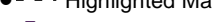
-  Completed Line
-  Completed Dozer Line
-  Completed Hand Line
-  Road as Completed Line
-  SpringCreek\_Landmarks


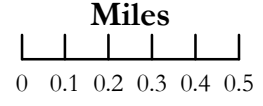




DHammond  
 7/10/2018  
 2017

**Spring Creek Fire**  
**IAP Map**  
 COCTX-1266  
 July 11, 2018  
 Day Shift  
 Approx. 107,967 acres  
 as of 7/9/18 @ 1630 hrs  
 Datum: NAD 83  
 Page 7 of 13  
 Br II - Div E/H

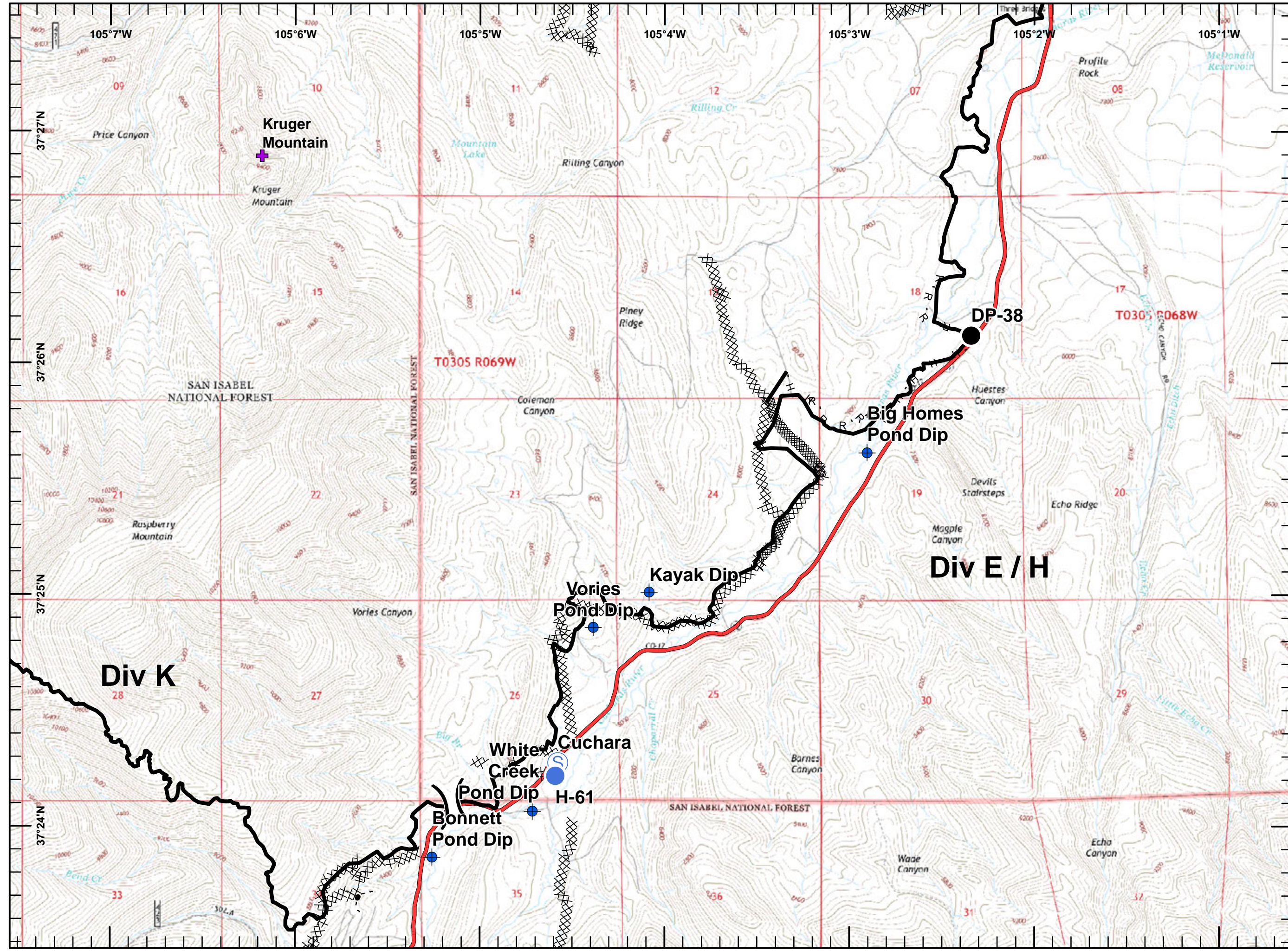
**Legend**

-  Completed Line
-  Completed Dozer Line
-  Completed Hand Line
-  Road as Completed Line
-  Highlighted Manmade Feature
-  SpringCreek\_Landmarks

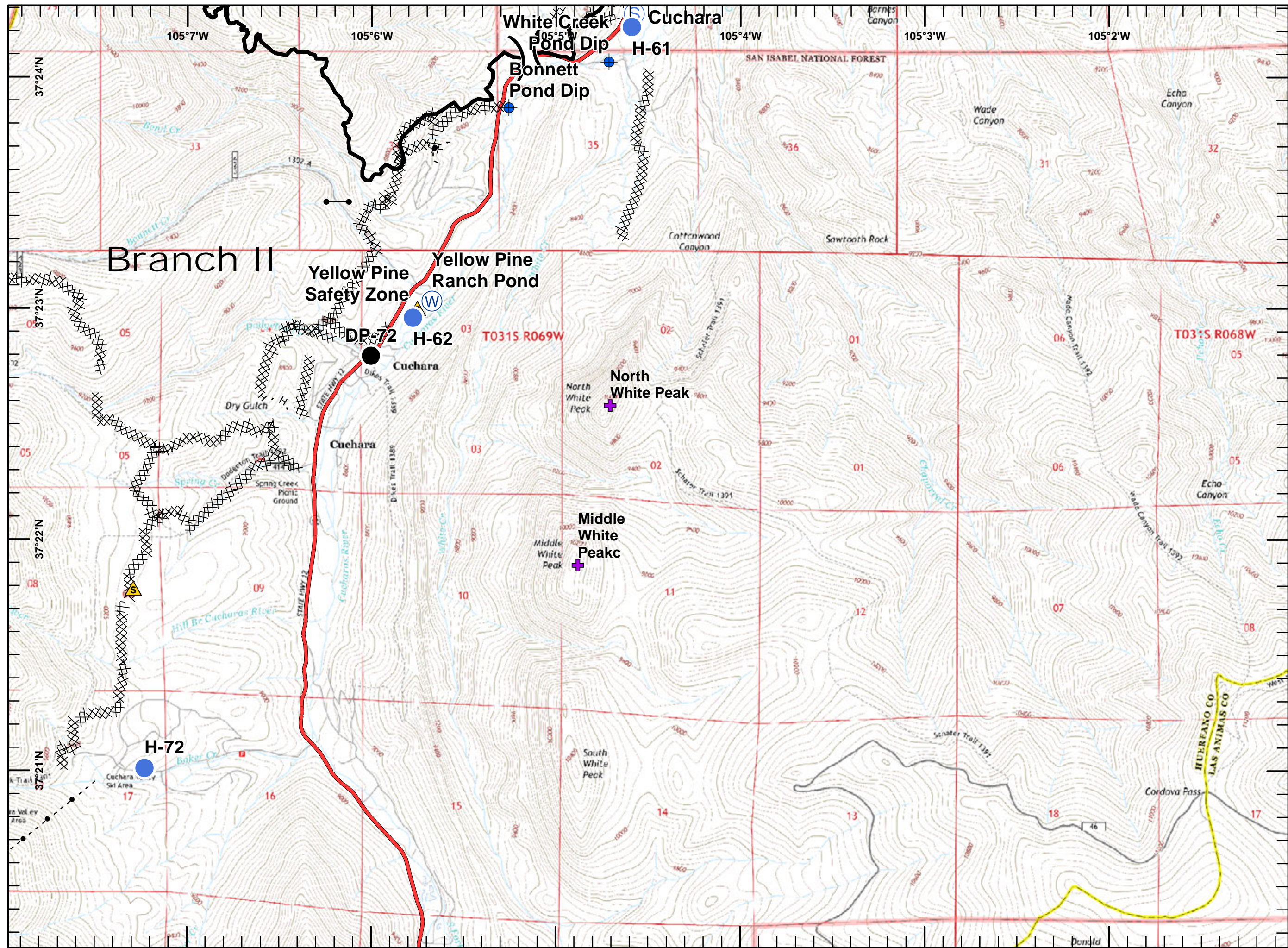


 DHammond  
 7/10/2018  
 2017



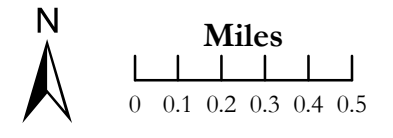


**Spring Creek Fire**  
**IAP Map**  
 COCTX-1266  
 July 11, 2018  
 Day Shift  
 Approx. 107,967 acres  
 as of 7/9/18 @ 1630 hrs  
 Datum: NAD 83  
 Page 8 of 13  
 Br II - Div K



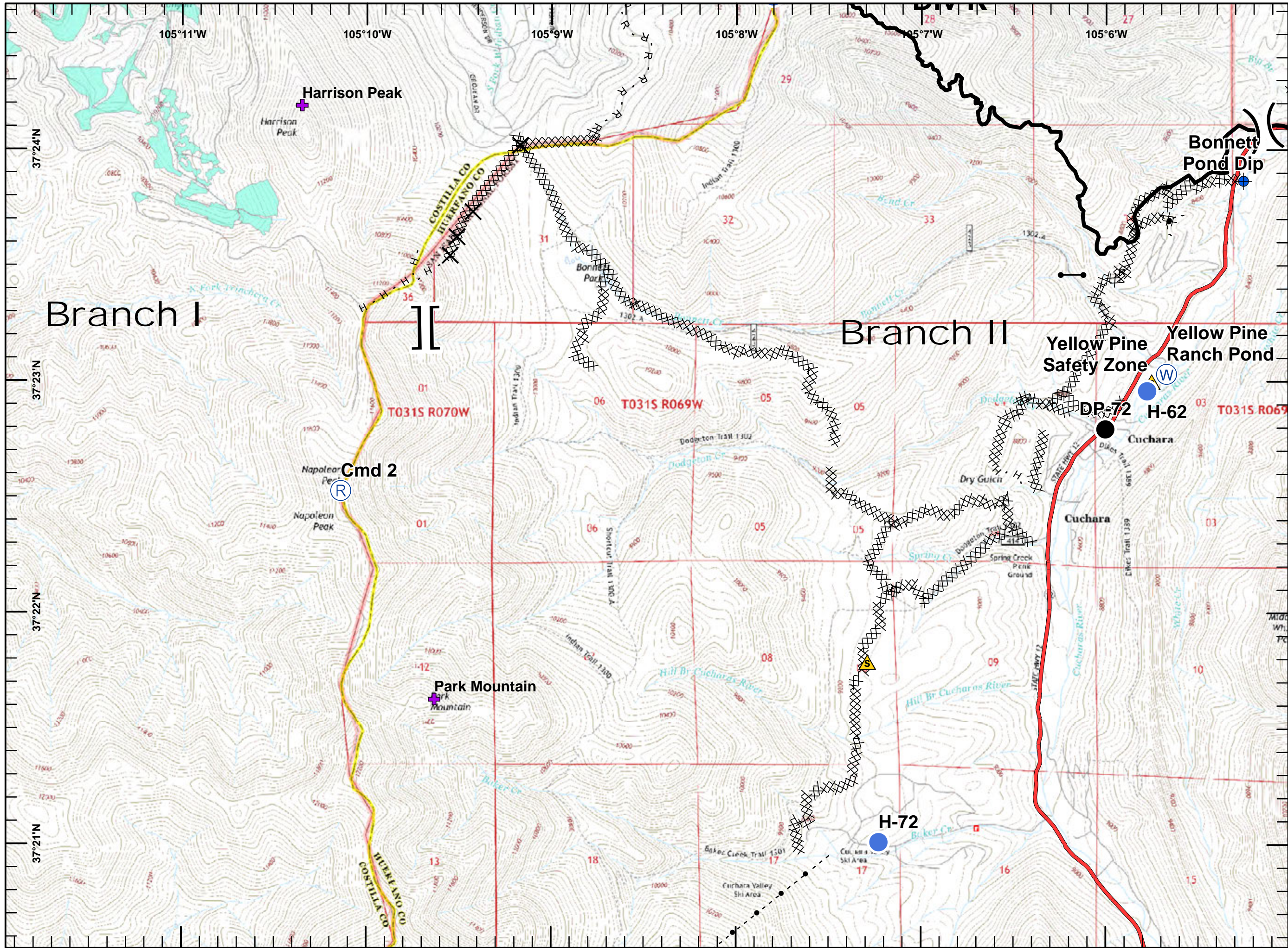
**Legend**

- Completed Line
- XXXX Completed Dozer Line
- H - Completed Hand Line
- R - Road as Completed Line
- - - - Highlighted Manmade Feature
- + SpringCreek\_Landmarks



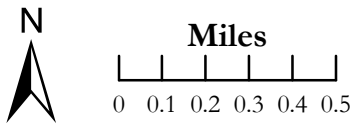
DHammond  
 7/10/2018  
 2017

Spring Creek Fire  
 IAP Map  
 COCTX-1266  
 July 11, 2018  
 Day Shift  
 Approx. 107,967 acres  
 as of 7/9/18 @ 1630 hrs  
 Datum: NAD 83  
 Page 9 of 13  
 Br II - Div K



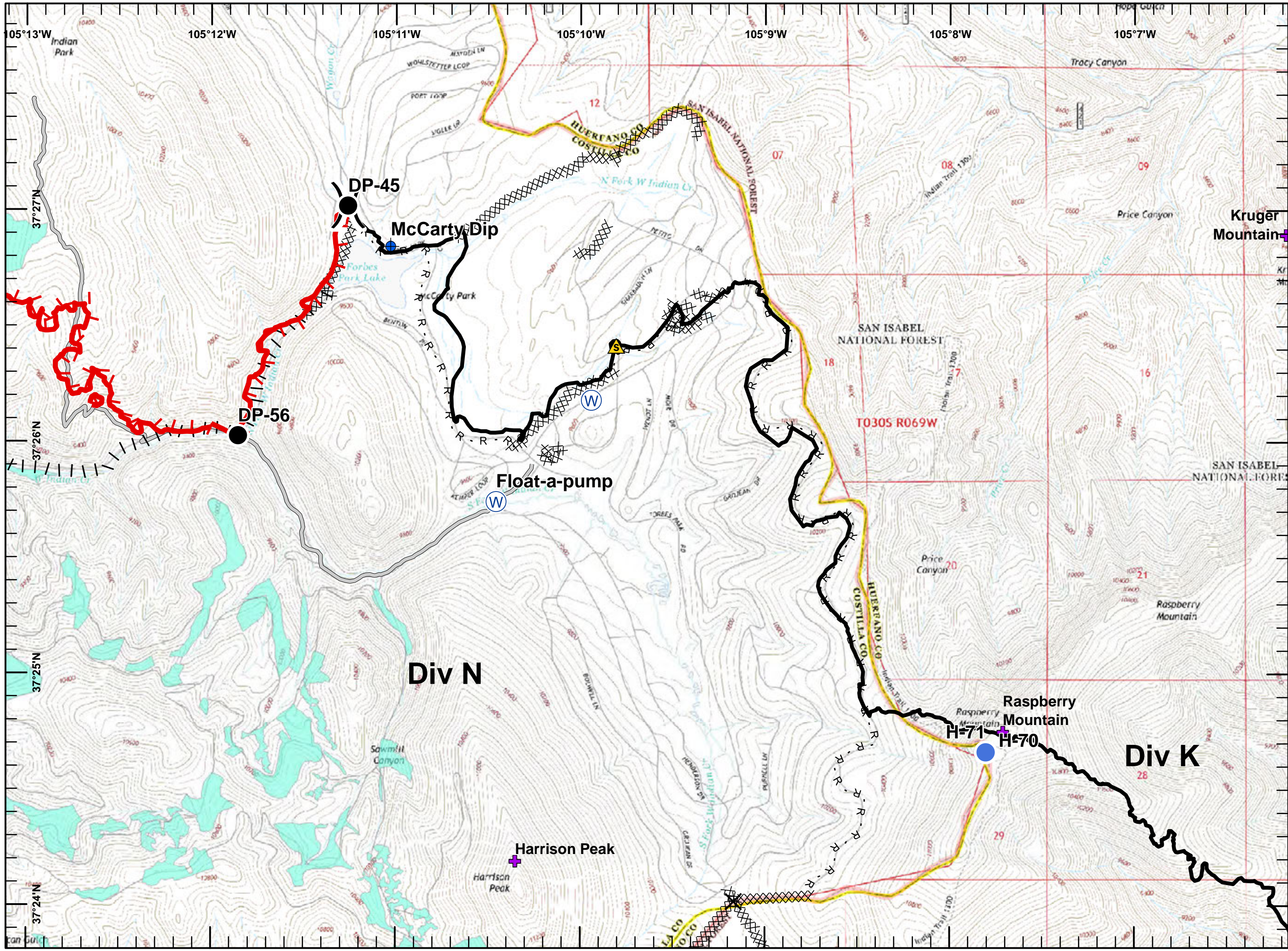
**Legend**

- Completed Line
- XXXX Completed Dozer Line
- H - Completed Hand Line
- R - Road as Completed Line
- - - Highlighted Manmade Feature
- Vegetation Treatment 2010-2015
- SpringCreek\_Landmarks



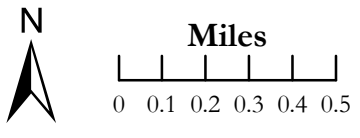
Rocky Mountain Fire Management Team logo. Text box: DHammond 7/10/2018 2017

**Spring Creek Fire**  
**IAP Map**  
 COCTX-1266  
 July 11, 2018  
 Day Shift  
 Approx. 107,967 acres  
 as of 7/9/18 @ 1630 hrs  
 Datum: NAD 83  
 Page 10 of 13  
 Br I - Div N



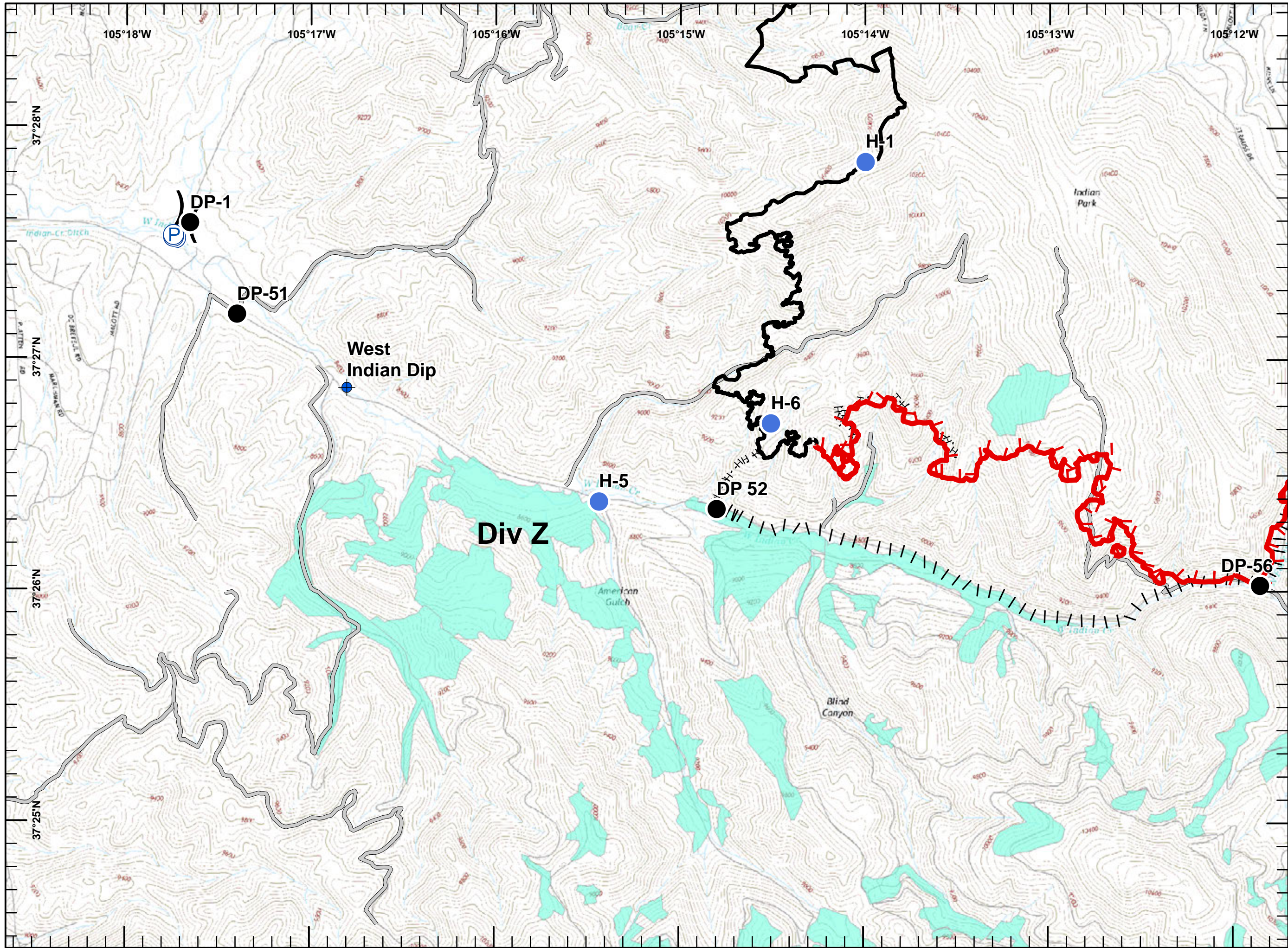
**Legend**

- Uncontrolled Fire Edge
- Completed Line
- Completed Dozer Line
- Completed Hand Line
- Road as Completed Line
- Access or Improved Road
- Proposed Burnout
- Vegetation Treatment 2010-2015
- SpringCreek\_Landmarks



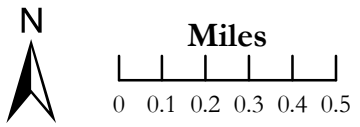
DHammond  
 7/10/2018  
 2017

**Spring Creek Fire**  
**IAP Map**  
 COCTX-1266  
 July 11, 2018  
 Day Shift  
 Approx. 107,967 acres  
 as of 7/9/18 @ 1630 hrs  
 Datum: NAD 83  
 Page 11 of 13  
 Br I - Div Z



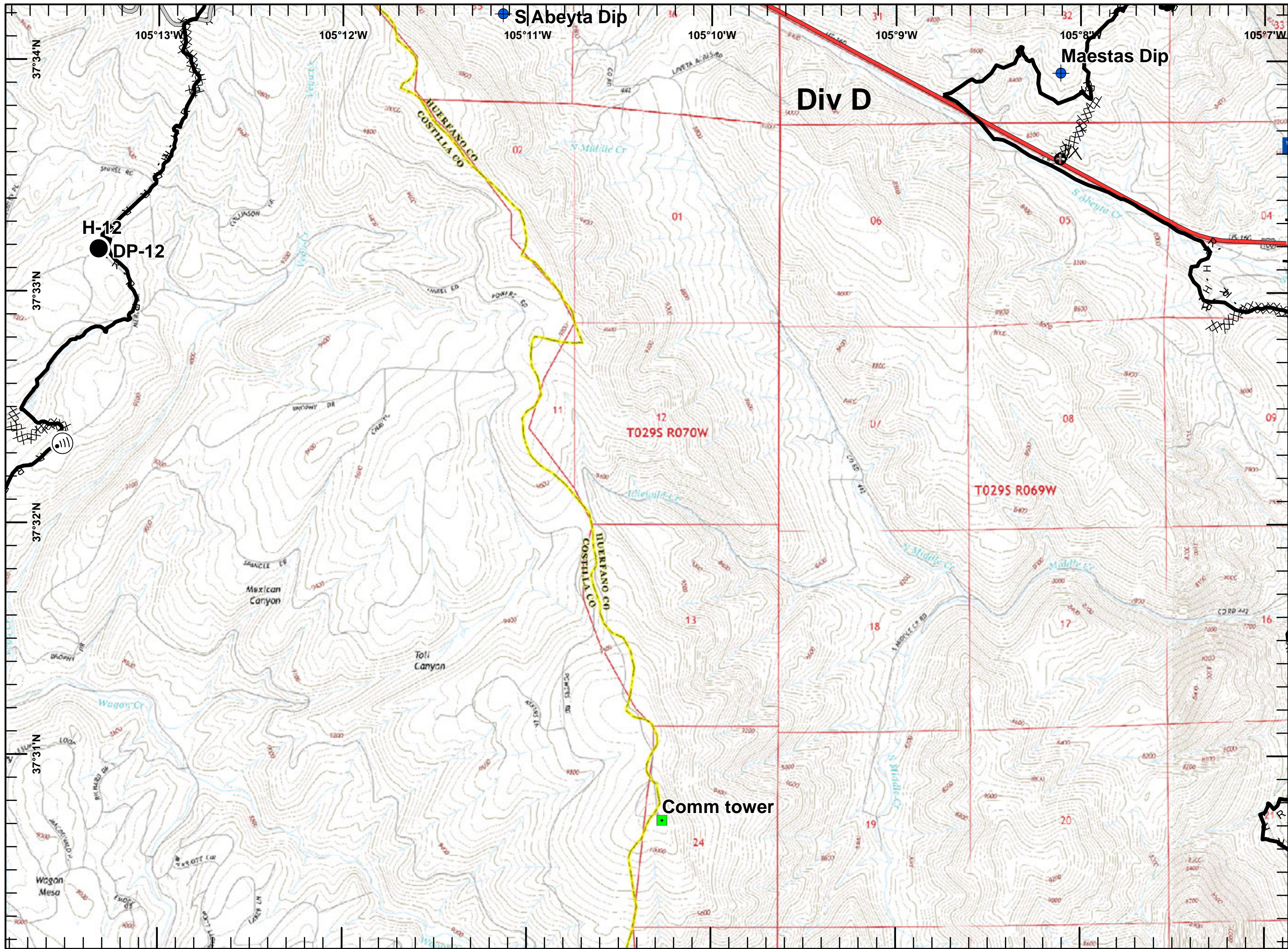
**Legend**

- ▬ Uncontrolled Fire Edge
- Completed Line
- Completed Hand Line
- Access or Improved Road
- Proposed Burnout
- Vegetation Treatment 2010-2015




DHammond  
7/10/2018  
2017

Spring Creek Fire  
 IAP Map  
 COCTX-1266  
 July 11, 2018  
 Day Shift  
 Approx. 107,967 acres  
 as of 7/9/18 @ 1630 hrs  
 Datum: NAD 83  
 Page 12 of 13  
 Center



**Legend**

- Completed Line
- Completed Dozer Line
- Completed Hand Line
- Road as Completed Line
- Access or Improved Road
- Line Break Completed
- Other





N

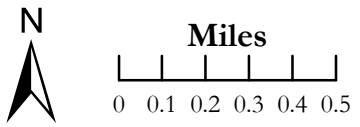
Miles  
 0 0.1 0.2 0.3 0.4 0.5

DHammond  
 7/10/2018  
 2017

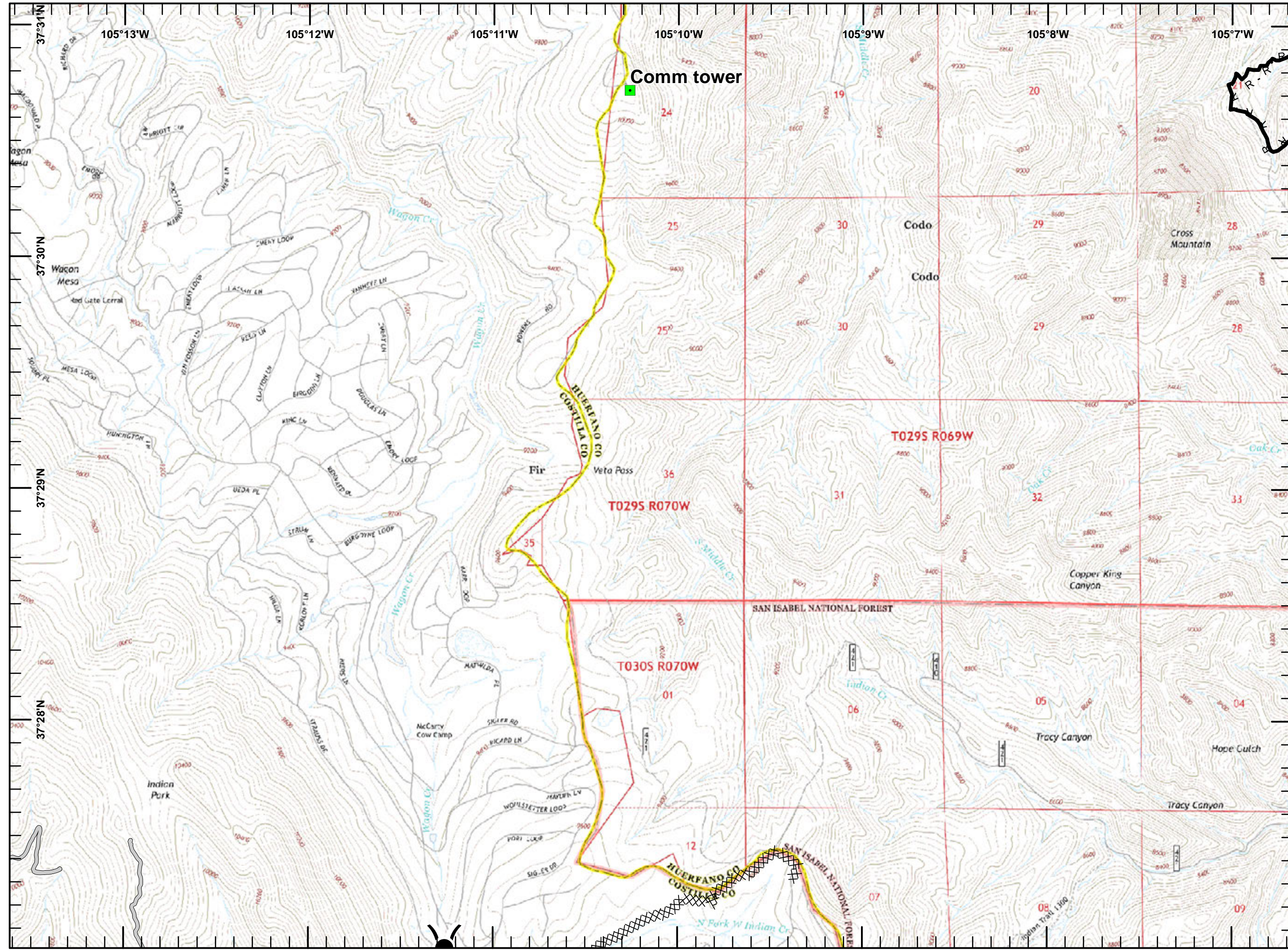
Spring Creek Fire  
 IAP Map  
 COCTX-1266  
 July 11, 2018  
 Day Shift  
 Approx. 107,967 acres  
 as of 7/9/18 @ 1630 hrs  
 Datum: NAD 83  
 Page 13 of 13  
 Center

**Legend**

-  Completed Line
-  Completed Dozer Line
-  R - Road as Completed Line
-  Access or Improved Road



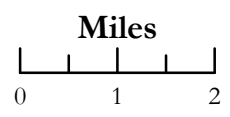

DHammond  
 7/10/2018  
 2017



**Spring Creek Fire**  
**IAP Map**  
 COCTX-1266  
 July 11, 2018  
 Day Shift  
 Approx. 107,967 acres  
 as of 7/9/18 @ 1630 hrs  
 Datum: NAD 83

**Legend**

- ▬ Uncontrolled Fire Edge
- Completed Line
- Completed Dozer Line
- Drop Point
- H Helibase
- Helispot
- Incident Command Post
- ) ( Division Break
- ] [ Branch Break
- ▲ Subdivision Points
- + Spring Creek Landmarks



DHammond  
 7/10/2018  
 2020

