

Pilot Map

Spring Creek
CO-CTX-001266
North Spring
CO-HUX-001313
NAD 83



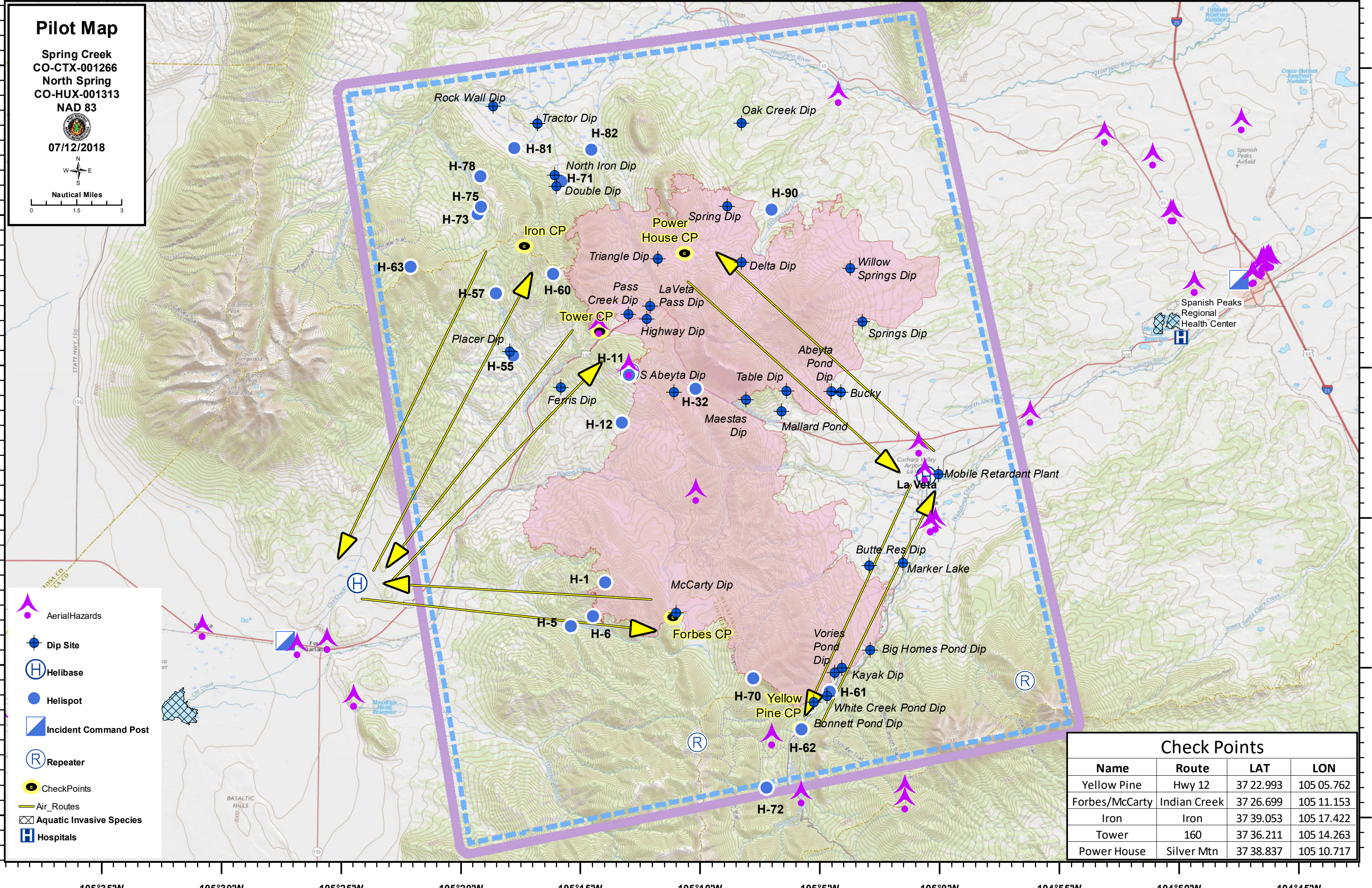
07/12/2018



Nautical Miles
0 1.5 3

- Aerial Hazards
- Dip Site
- Helibase
- Helispot
- Incident Command Post
- Repeater
- CheckPoints
- Air_Routes
- Aquatic Invasive Species
- Hospitals

Check Points			
Name	Route	LAT	LON
Yellow Pine	Hwy 12	37 22.993	105 05.762
Forbes/McCarty	Indian Creek	37 26.699	105 11.153
Iron	Iron	37 39.053	105 17.422
Tower	160	37 36.211	105 14.263
Power House	Silver Mtn	37 38.837	105 10.717



105°35'W 105°30'W 105°25'W 105°20'W 105°15'W 105°10'W 105°5'W 105°0'W 104°55'W 104°50'W 104°45'W

37°45'N
37°40'N
37°35'N
37°30'N
37°25'N
37°20'N