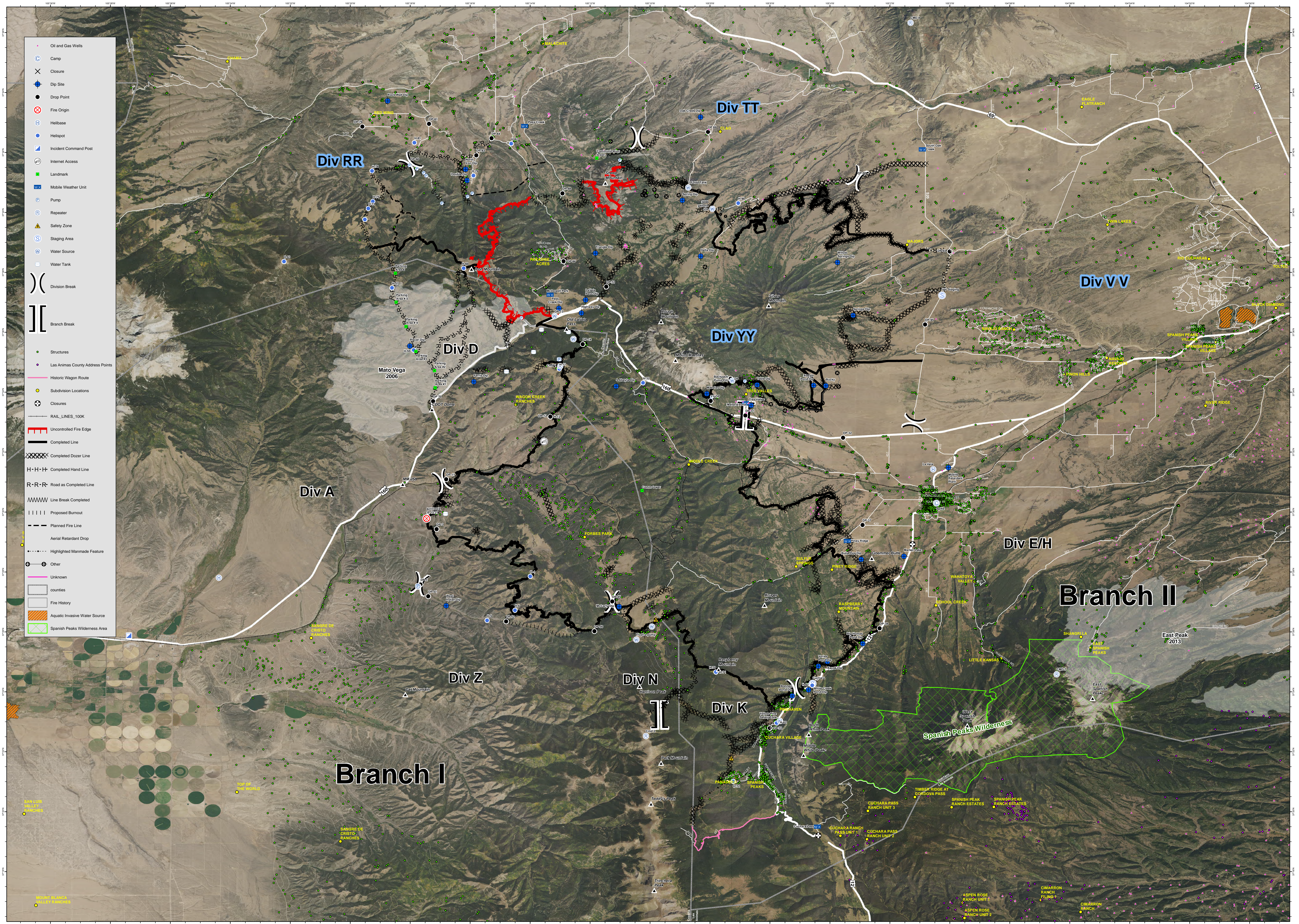


- Oil and Gas Wells
- Camp
- Closure
- Dip Site
- Drop Point
- Fire Origin
- Helibase
- Helispot
- Incident Command Post
- Internet Access
- Landmark
- Mobile Weather Unit
- Pump
- Repeater
- Safety Zone
- Staging Area
- Water Source
- Water Tank
- Division Break
- Branch Break
- Structures
- Las Animas County Address Points
- Historic Wagon Route
- Subdivision Locations
- Closures
- RAIL_LINES_100K
- Uncontrolled Fire Edge
- Completed Line
- Completed Dozer Line
- Completed Hand Line
- Road as Completed Line
- Line Break Completed
- Proposed Burnout
- Planned Fire Line
- Aerial Retardant Drop
- Highlighted Manmade Feature
- Other
- Unknown
- counties
- Fire History
- Aquatic Invasive Water Source
- Spanish Peaks Wilderness Area



Spring Creek Fire - CO-CTX-1266 - Situation Map

July 12, 2018 - Day Shift
 Approx 107,967 acres as of 7/9/18 1630 hrs

