

# Air Operations

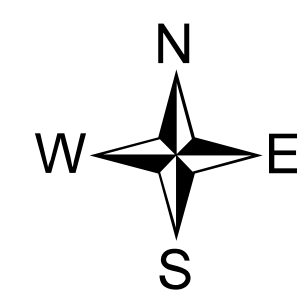
CO-CTX-1266

Spring Creek

NAD 83

07/10/2018

Approx 107,697 acres  
as of 1630 7/9/2018



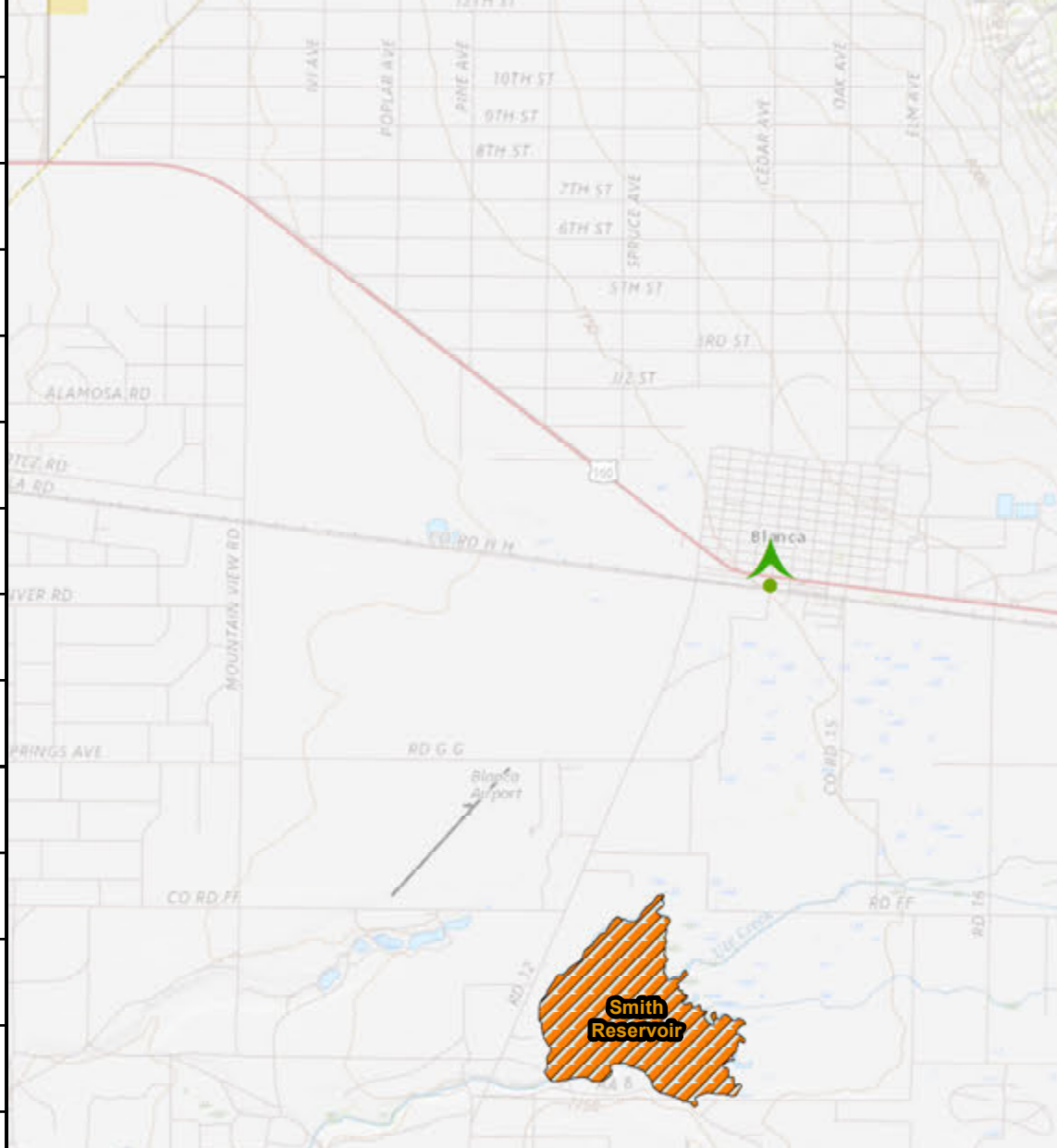
Nautical Miles



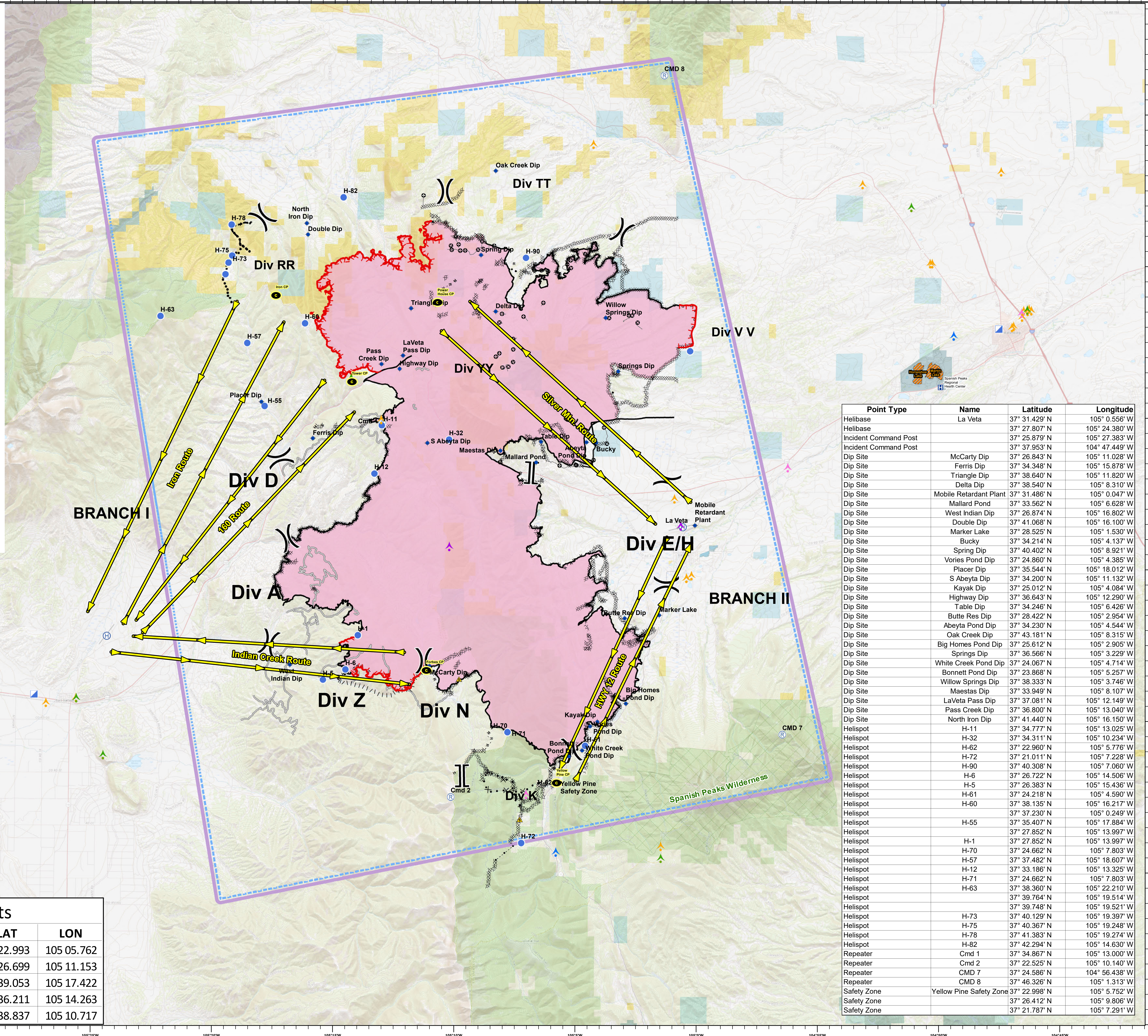
- Check Points
- Air Routes
- Spanish Peaks Wilderness Area
- Aquatic Invasive Water Source
- Land Mobile Broadcast Towers
- Land Mobile Commercial Transmission Towers
- FM Transmission Towers
- Cellular Towers
- Antenna Structure Registrars
- Hospitals
- Dip Site
- Helibase
- Helispot
- Incident Command Post
- Repeater
- Safety Zone
- Uncontrolled Fire Edge
- Completed Line
- Completed Dozer Line
- Completed Hand Line
- Road as Completed Line
- Access or Improved Road
- Line Break Completed
- Proposed Burnout
- Proposed Dozer Line
- Planned Fire Line
- Planned Secondary Line
- Aerial Retardant Drop
- Highlighted Manmade Feature
- Other
- Unknown
- Wildfire Daily Fire Perimeter
- IFR

Division Break

Branch Break



Check Points			
Name	Route	LAT	LON
Yellow Pine	Hwy 12	37 22.993	105 05.762
Forbes/McCarty	Indian Creek	37 26.699	105 11.153
Iron	Iron	37 39.053	105 17.422
Tower	160	37 36.211	105 14.263
Power House	Silver Mtn	37 38.837	105 10.717



Point Type	Name	Latitude	Longitude
Helibase	La Veta	37° 31.429' N	105° 0.556' W
Helibase		37° 27.807' N	105° 24.380' W
Incident Command Post		37° 25.879' N	105° 27.383' W
Incident Command Post		37° 37.953' N	104° 47.449' W
Dip Site	McCarty Dip	37° 26.843' N	105° 11.028' W
Dip Site	Ferris Dip	37° 34.348' N	105° 15.878' W
Dip Site	Triangle Dip	37° 38.640' N	105° 11.820' W
Dip Site	Delta Dip	37° 38.540' N	105° 8.310' W
Dip Site	Mobile Retardant Plant	37° 31.486' N	105° 0.047' W
Dip Site	Mallard Pond	37° 33.562' N	105° 6.628' W
Dip Site	West Indian Dip	37° 26.874' N	105° 16.802' W
Dip Site	Double Dip	37° 41.068' N	105° 16.100' W
Dip Site	Marker Lake	37° 28.525' N	105° 1.530' W
Dip Site	Bucky	37° 34.214' N	105° 4.137' W
Dip Site	Spring Dip	37° 40.402' N	105° 8.921' W
Dip Site	Vories Pond Dip	37° 24.860' N	105° 4.385' W
Dip Site	Placer Dip	37° 35.544' N	105° 18.012' W
Dip Site	S Abeyta Dip	37° 34.200' N	105° 11.132' W
Dip Site	Kayak Dip	37° 25.012' N	105° 4.084' W
Dip Site	Highway Dip	37° 36.643' N	105° 12.290' W
Dip Site	Table Dip	37° 34.246' N	105° 6.426' W
Dip Site	Butte Res Dip	37° 28.422' N	105° 2.954' W
Dip Site	Abeyta Pond Dip	37° 34.230' N	105° 4.544' W
Dip Site	Oak Creek Dip	37° 43.181' N	105° 8.315' W
Dip Site	Big Homes Pond Dip	37° 25.612' N	105° 2.905' W
Dip Site	Springs Dip	37° 36.566' N	105° 3.229' W
Dip Site	White Creek Pond Dip	37° 24.067' N	105° 4.714' W
Dip Site	Bonnett Pond Dip	37° 23.868' N	105° 5.257' W
Dip Site	Willow Springs Dip	37° 38.333' N	105° 3.746' W
Dip Site	Maestas Dip	37° 33.949' N	105° 8.107' W
Dip Site	LaVeta Pass Dip	37° 37.081' N	105° 12.149' W
Dip Site	Pass Creek Dip	37° 36.800' N	105° 13.040' W
Dip Site	North Iron Dip	37° 41.440' N	105° 16.150' W
Helispot	H-11	37° 34.777' N	105° 13.025' W
Helispot	H-32	37° 34.311' N	105° 10.234' W
Helispot	H-62	37° 22.960' N	105° 5.776' W
Helispot	H-72	37° 21.011' N	105° 7.228' W
Helispot	H-90	37° 40.308' N	105° 7.060' W
Helispot	H-6	37° 26.722' N	105° 14.506' W
Helispot	H-5	37° 26.383' N	105° 15.436' W
Helispot	H-61	37° 24.218' N	105° 4.590' W
Helispot	H-60	37° 38.135' N	105° 16.217' W
Helispot	H-55	37° 35.407' N	105° 17.884' W
Helispot	H-72	37° 27.852' N	105° 13.997' W
Helispot	H-1	37° 27.852' N	105° 13.997' W
Helispot	H-70	37° 24.662' N	105° 7.803' W
Helispot	H-57	37° 37.482' N	105° 18.607' W
Helispot	H-12	37° 33.186' N	105° 13.325' W
Helispot	H-71	37° 24.662' N	105° 7.803' W
Helispot	H-63	37° 38.360' N	105° 22.210' W
Helispot		37° 39.764' N	105° 19.514' W
Helispot		37° 39.748' N	105° 19.521' W
Helispot	H-73	37° 40.129' N	105° 19.397' W
Helispot	H-75	37° 40.367' N	105° 19.248' W
Helispot	H-78	37° 41.383' N	105° 19.274' W
Helispot	H-82	37° 42.294' N	105° 14.630' W
Repeater	Cmd 1	37° 34.867' N	105° 13.000' W
Repeater	Cmd 2	37° 22.525' N	105° 10.140' W
Repeater	CMD 7	37° 24.586' N	104° 56.438' W
Repeater	CMD 8	37° 46.326' N	105° 1.313' W
Safety Zone	Yellow Pine Safety Zone	37° 22.998' N	105° 5.752' W
Safety Zone		37° 26.412' N	105° 9.806' W
Safety Zone		37° 21.787' N	105° 7.291' W