

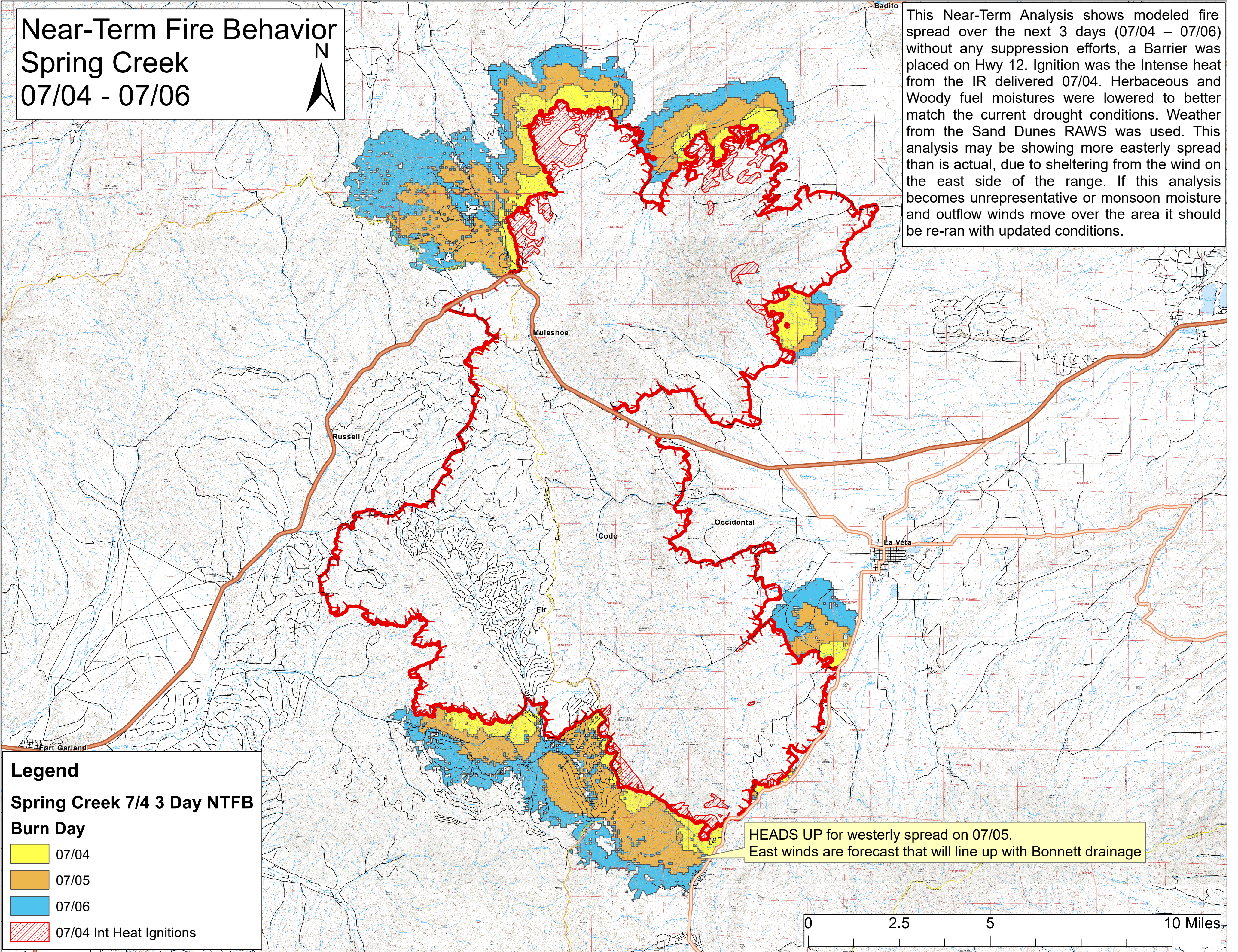
# Near-Term Fire Behavior

## Spring Creek

07/04 - 07/06



This Near-Term Analysis shows modeled fire spread over the next 3 days (07/04 – 07/06) without any suppression efforts, a Barrier was placed on Hwy 12. Ignition was the Intense heat from the IR delivered 07/04. Herbaceous and Woody fuel moistures were lowered to better match the current drought conditions. Weather from the Sand Dunes RAWS was used. This analysis may be showing more easterly spread than is actual, due to sheltering from the wind on the east side of the range. If this analysis becomes unrepresentative or monsoon moisture and outflow winds move over the area it should be re-ran with updated conditions.



**Legend**

**Spring Creek 7/4 3 Day NTFB**

**Burn Day**

- 07/04
- 07/05
- 07/06
- 07/04 Int Heat Ignitions

HEADS UP for westerly spread on 07/05.  
East winds are forecast that will line up with Bonnett drainage

