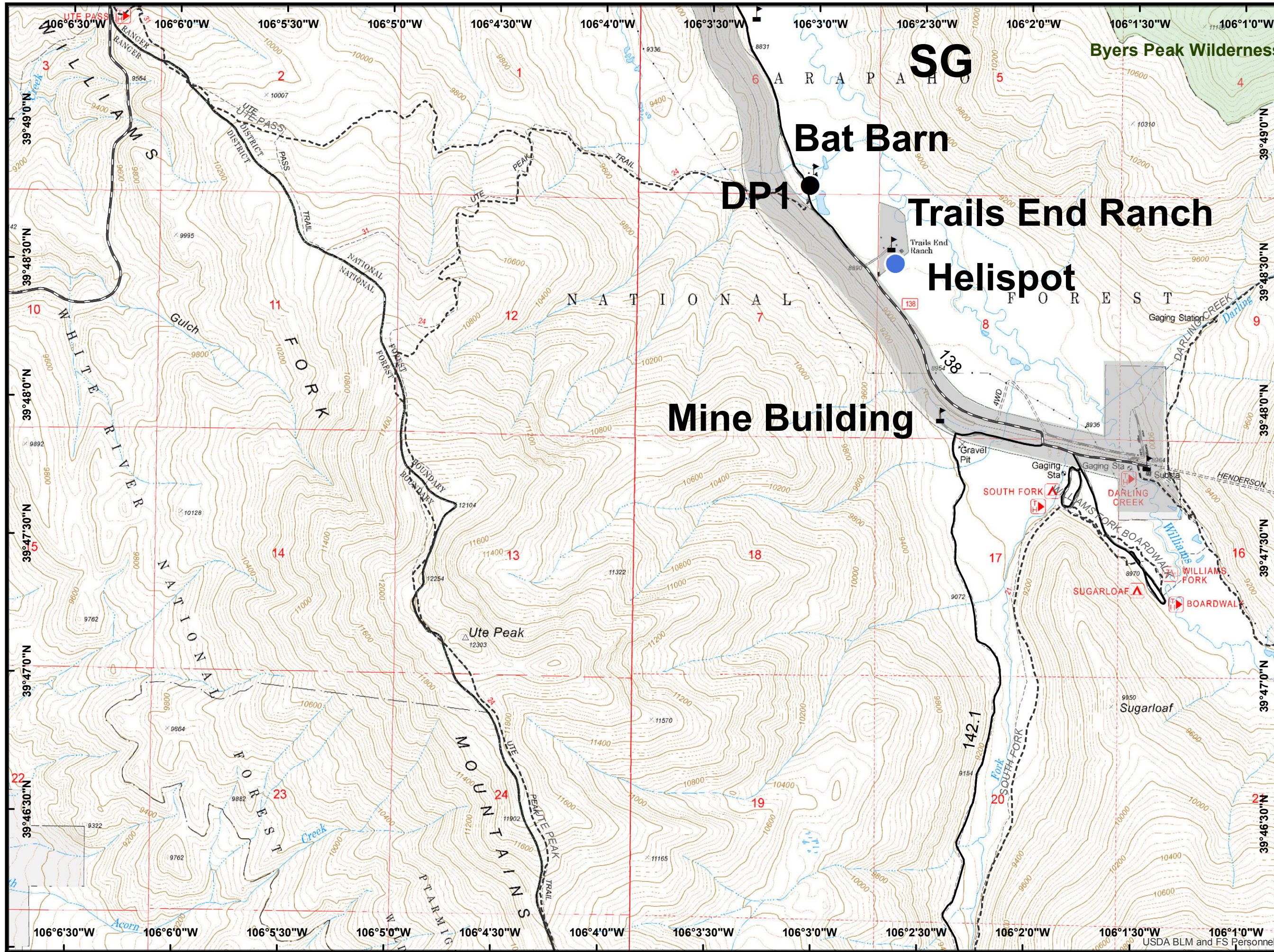











**Sugarloaf Fire**  
**CO-ARF-000354**  
**1214 Acres**  
**July 4, 2018**  
**0700 Hours**

Page 5 of 6



**Legend**

-  Drop Point
-  Helispot
-  Value at Risk
-  Wilderness
-  National Forest Land
-  Non-Federal Land
-  National Forest System Trail
-  National Forest System Road
-  County Roads



1:24,000

