

107°56'W

107°55'W

107°54'W

### Infrared Map

Sulphur (CO-WRD-000326)

Map Date: 07/25/2018

Imagery Date: 07/24/2018

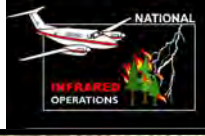
Imagery Time: 2142 MDT

IR Interpreted Acres: 671 acres

IRIN: Tammy Hocut

- Isolated Heat Sources
- Heat Perimeter
- Intense Heat
- Scattered Heat

WGS 1984 UTM Zone 13N



40°9'N

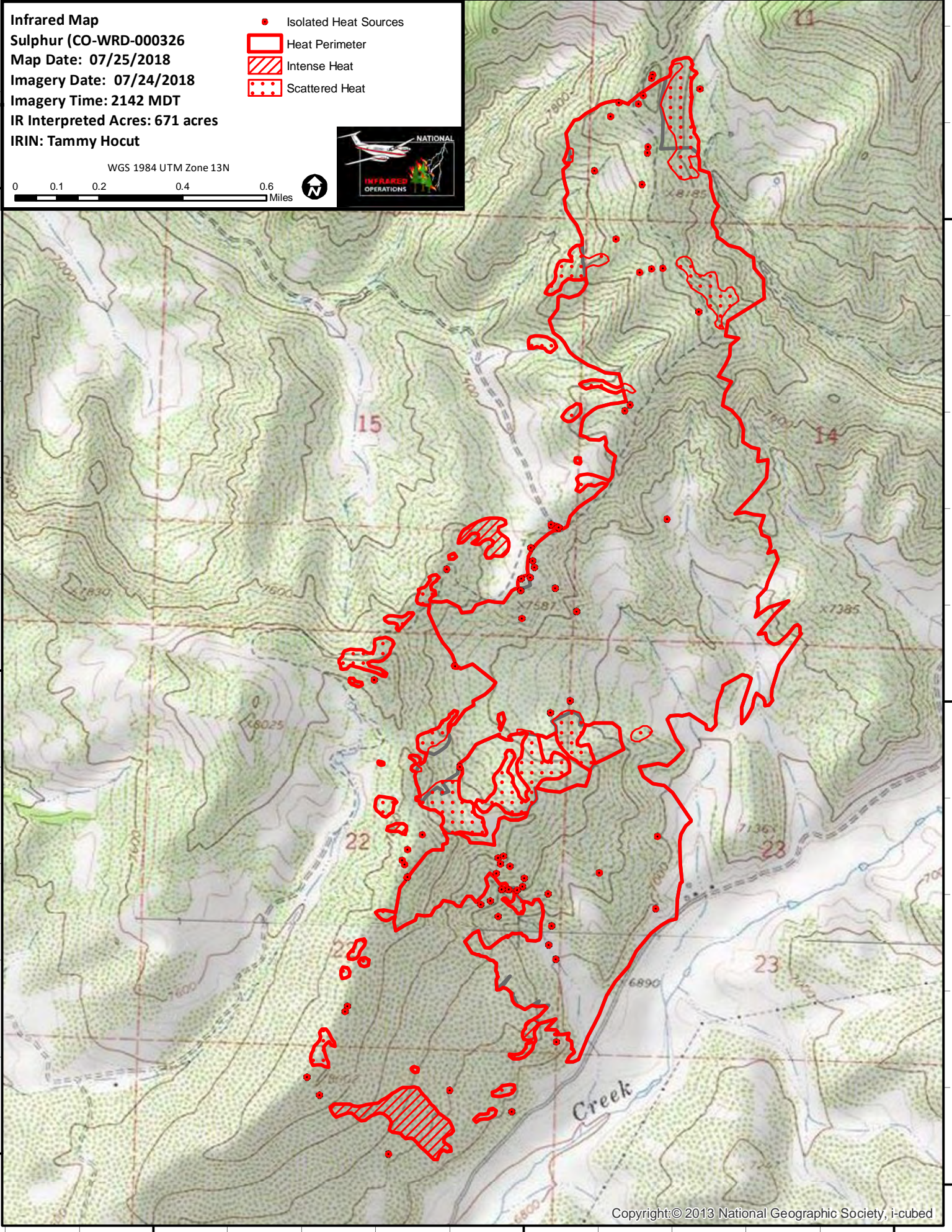
40°9'N

40°8'N

40°8'N

40°7'N

40°7'N



107°56'W

107°55'W

107°54'W