

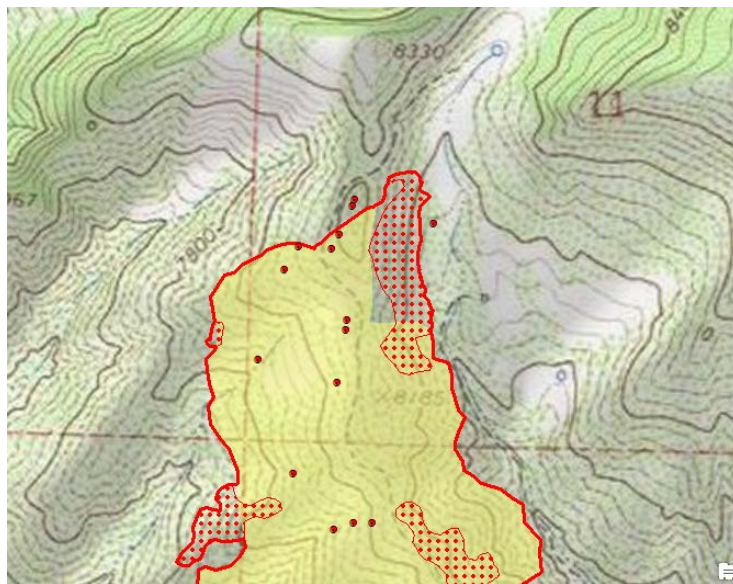
## INFRARED INTERPRETER'S DAILY LOG

|  |   |   |  |
|--|---|---|--|
| <b>Incident Name:</b><br>Sulphur<br>CO-WRD-000326  | <b>IR Interpreter(s):</b><br>Tammy Hocut<br>thocut@fs.fed.us  | <b>Local Dispatch Phone:</b><br>Craig<br>970-826-5037   | <b>Interpreted Size:</b><br>671 Acres<br><b>Growth:</b><br>75 Acres                                    |
| <b>Flight Time:</b><br>2142 (MDT)<br><b>Flight Date:</b><br>07/24/2018                       | <b>Interpreter(s) location:</b><br>Jasper, AR<br><b>Interpreter(s) Phone:</b><br>870-446-5878 (landline)<br>870-365-2810 (cell) | <b>GACC IR Liaison:</b><br>Elise Bowne<br><b>GACC IR Liaison Phone:</b> 303-517-7510  | <b>National Coordinator:</b><br>Tom Mellin<br><b>National Coord. Phone:</b><br>505-301-8167            |
| <b>Ordered By:</b> SWA IMT5<br>Tara Umphries: SITL<br>720-618-2543<br>tumphries@firenet.gov  | <b>A Number:</b><br>A-44  | <b>Aircraft/Scanner System:</b><br>N144Z / Phoenix  | <b>Pilots/Techs:</b><br>Johnson & Netcher / Bob Brantlinger & Mike Mann                                |
| <b>IRIN Comments on imagery:</b><br>1 pass, Ortho and Color flown in an east-west direction. |   | <b>Weather at time of flight:</b><br>Clear  | <b>Flight Objective:</b><br>Identify and map Heat perimeter, Scattered Heat and Isolated Heat Sources. |
| <b>Date and Time Imagery Received by Interpreter:</b><br>07/24/2018 – 2209 (MDT)             |   | <b>Type of media for final product:</b><br>Shape files, KMZ, PDF, and IRIN Log  |  |
| <b>Date and Time Products Delivered to Incident:</b><br>07/25/2018 – 0005 (MDT)              |   | <b>Digital files sent to: NIFC FTP @</b><br><a href="https://ftp.nifc.gov/public/incident_specific_data/rocky_mtn/2018/Sulphur/IR/20180725/">https://ftp.nifc.gov/public/incident_specific_data/rocky_mtn/2018/Sulphur/IR/20180725/</a> |  |

**Comments /notes on tonight's mission and this interpretation:**

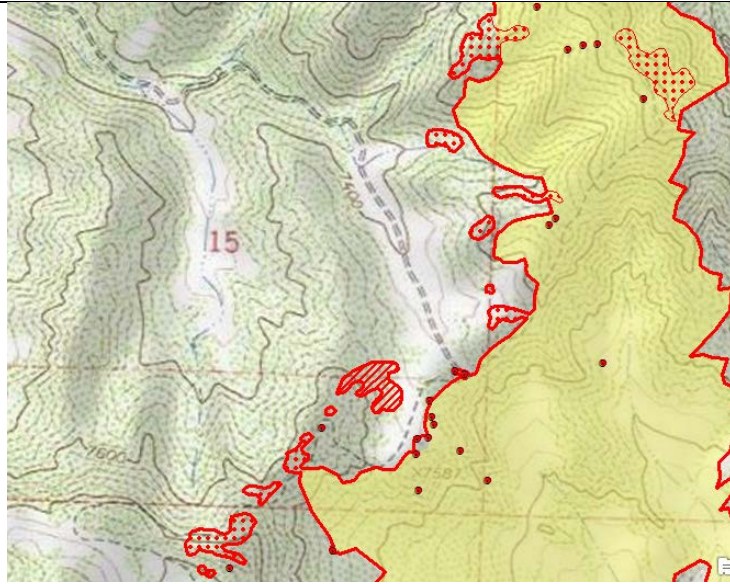
Started interpretation from fire perimeter pulled from WFDS with starting acres 596. There was a growth of 75 acres for a total 671 acres.

All the growth was on the north down the west side and to the south. No growth on the east side of the fire. There was some growth on the north point of the fire in section 11 with a few isolated heat sources outside the main fire heat perimeter.

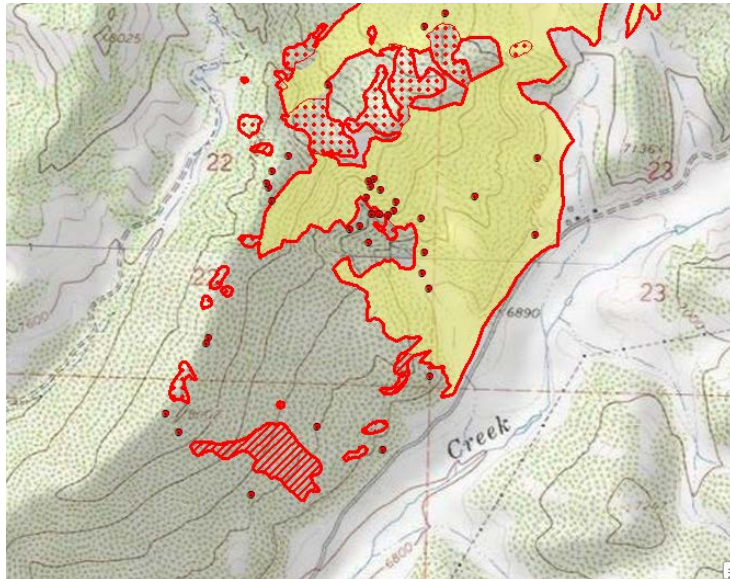


In sections 15 and 22 on the west side of the fire there were areas of growth with scattered heat and also fire polygons outside the main fire perimeter with either scattered heat or intense heat.

# INFRARED INTERPRETER'S DAILY LOG



In sections 27 and 22 on the west and south part of the fire is where most of the fire activity was seen. There was multiple isolated heat sources and fire polygons outside the main fire perimeter. All of these were still north of Sulpher Creek.



The rest of the fire on the interior had light scattered isolated heat sources.

