

107°56'W

107°55'W

107°54'W

### Infrared Map

Sulphur (CO-WRD-000326)

Map Date: 07/27/2018

Imagery Date: 07/27/2018

Imagery Time: 0253 MDT

IRIN: Tammy Hocut

- Isolated Heat Sources
- Heat Perimeter
- Intense Heat
- Scattered Heat

NAD 1983 UTM Zone 13N

0 0.1 0.2 0.4 0.6 Miles



40°9'N

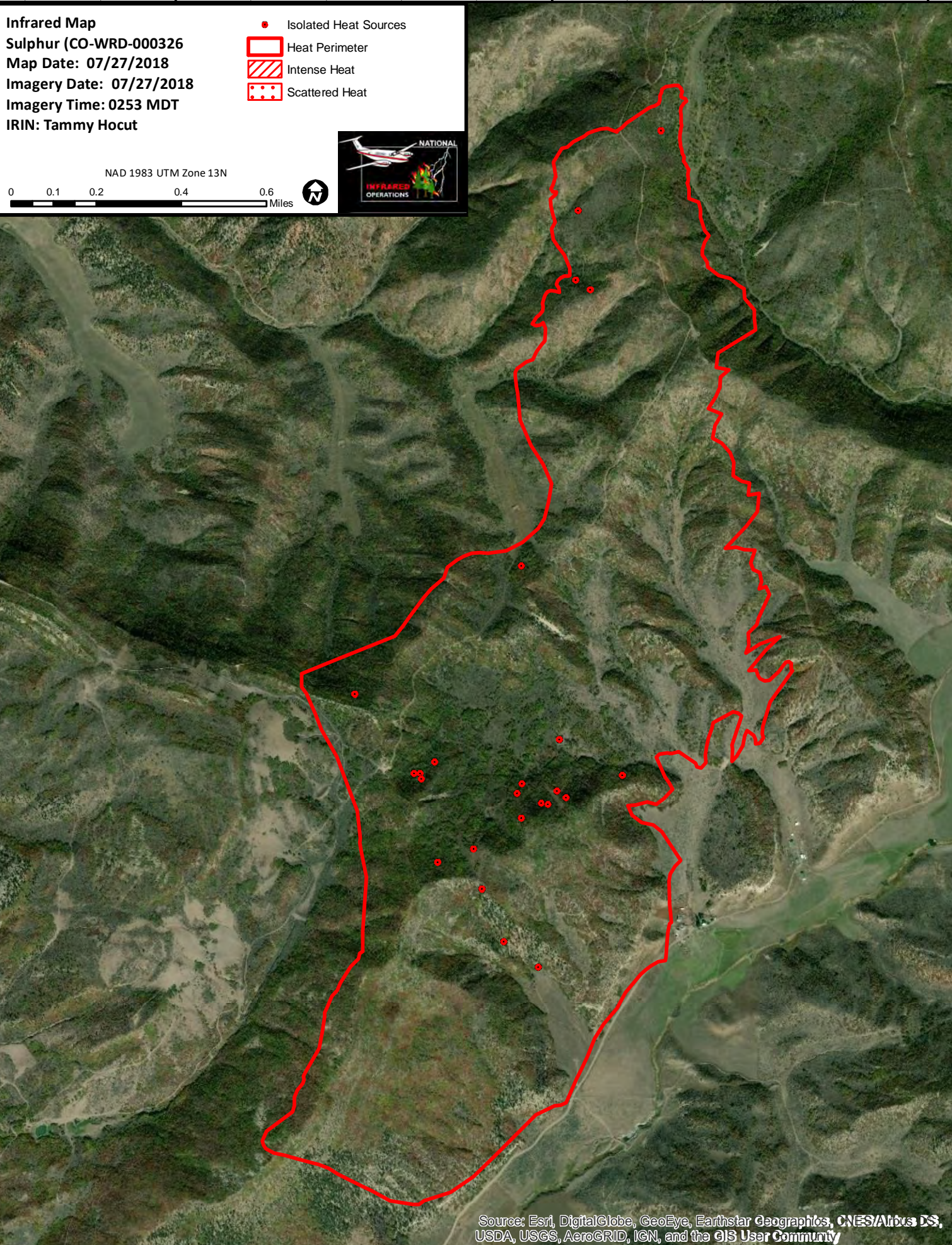
40°9'N

40°8'N

40°8'N

40°7'N

40°7'N



Source: Esri, DigitalGlobe, GeoEye, Earthstar Geographics, CNES/Airbus DS, USDA, USGS, AeroGRID, IGN, and the GIS User Community

107°56'W

107°55'W

107°54'W