

106°7'W 106°6'W 106°5'W 106°4'W 106°3'W 106°2'W 106°1'W 106°0'W 105°59'W 105°58'W 105°57'W

39°7'N 39°6'N 39°5'N 39°4'N 39°3'N 39°2'N 39°1'N 39°0'N 38°59'N 38°58'N 38°57'N

WESTON PASS CO-PSF-001278




Operations Map 7/2/18

IR Perimeter as of 7/1/18 2159 6,417 ac.

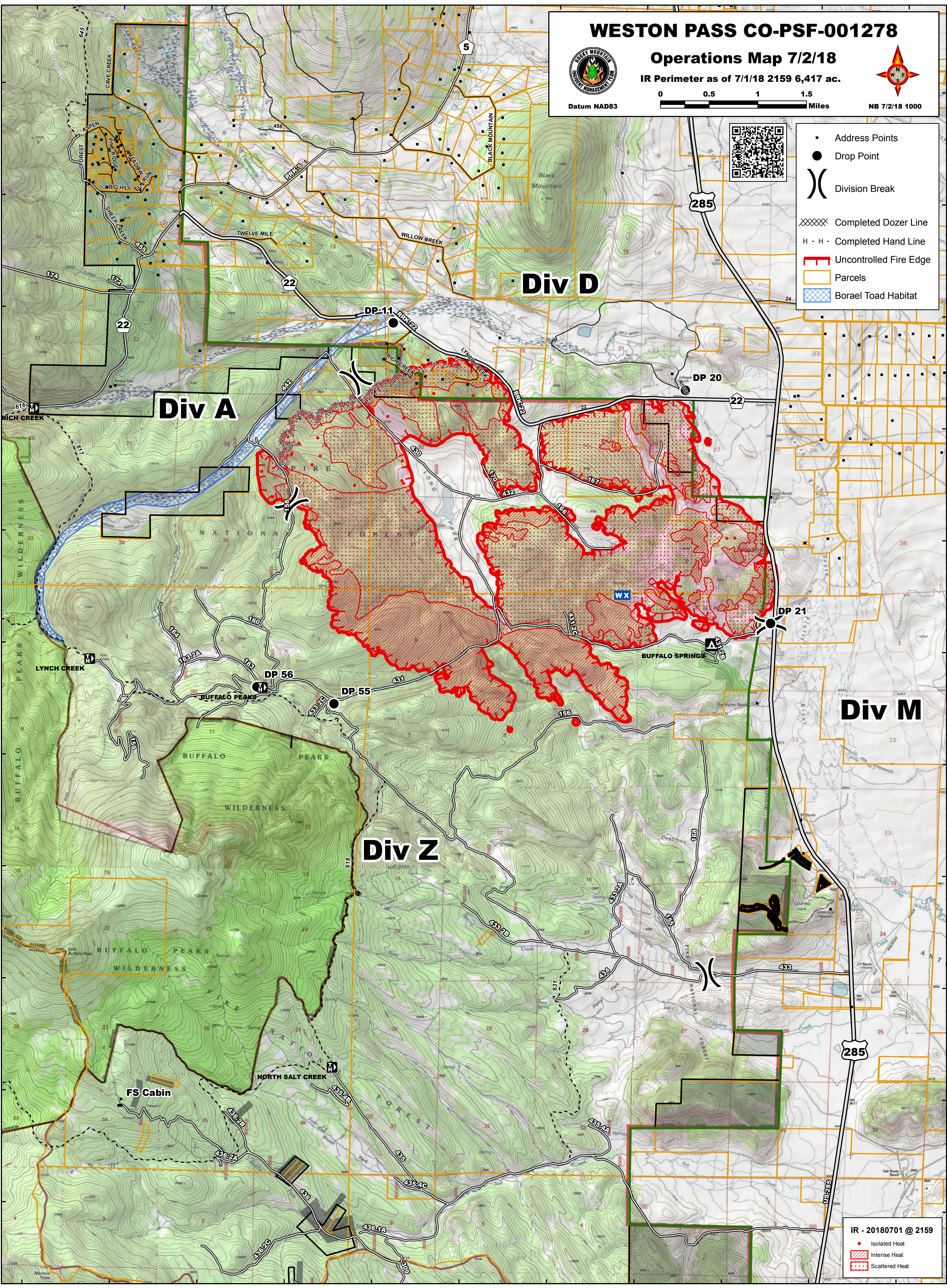
Datum NAD83

0 0.5 1 1.5 Miles

NB 7/2/18 1000

- Address Points
- Drop Point
-) Division Break
- XXXXX Completed Dozer Line
- H - H - Completed Hand Line
- Uncontrolled Fire Edge
- Parcels
- Boreal Toad Habitat



IR - 20180701 @ 2159

- Isolated Heat
- Intense Heat
- Scattered Heat