

106°7'W 106°6'W 106°5'W 106°4'W 106°3'W 106°2'W 106°1'W 106°0'W 105°59'W 105°58'W 105°57'W

39°7'N 39°6'N 39°5'N 39°4'N 39°3'N 39°2'N 39°1'N 39°0'N 38°59'N 38°58'N 38°57'N

WESTON PASS CO-PSF-001278




Operations Map 7/3/18

IR Perimeter as of 7/2/18 2211 9,217 ac.

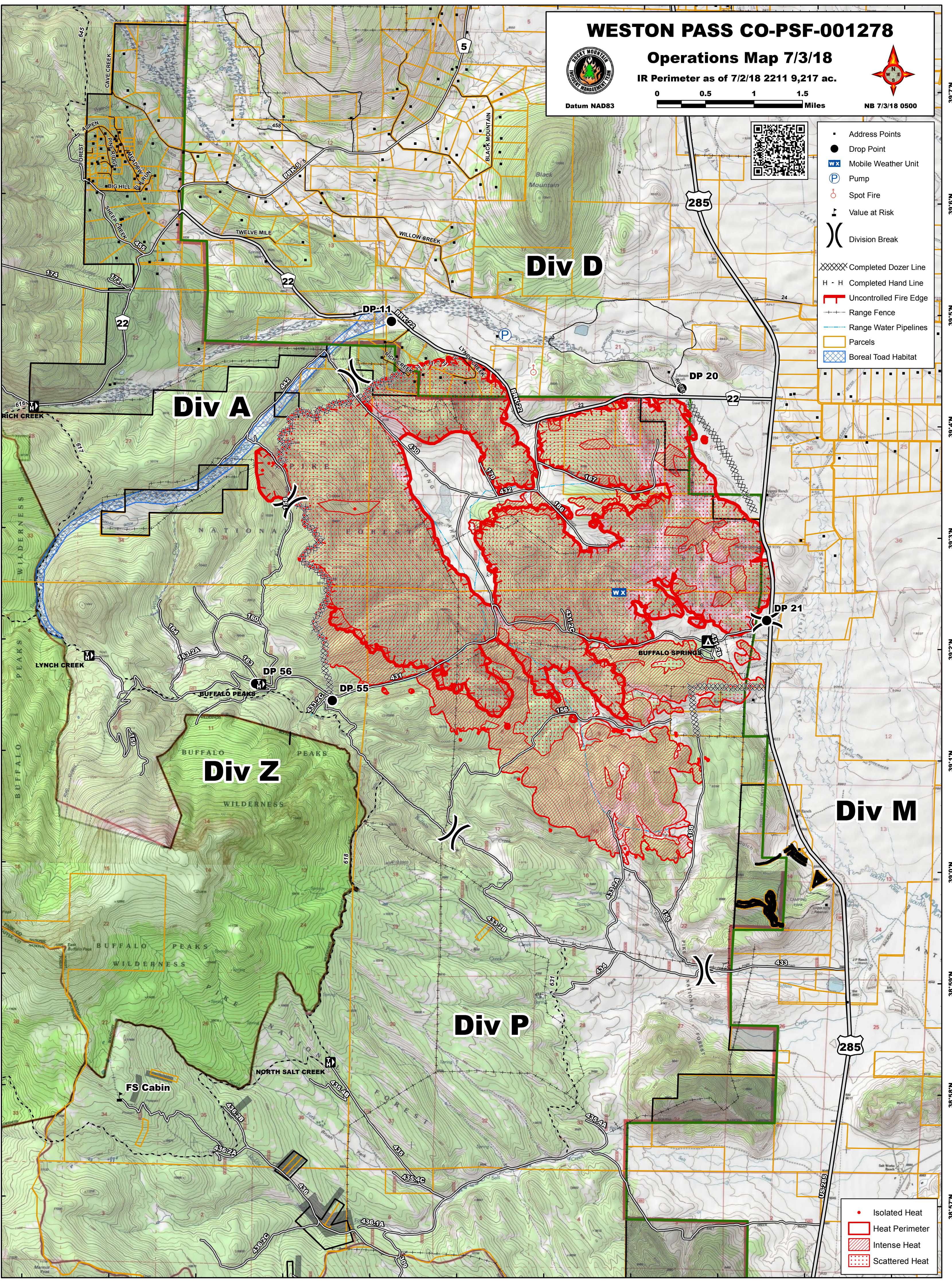
Datum NAD83

0 0.5 1 1.5 Miles

NB 7/3/18 0500

- Address Points
- Drop Point
- WX Mobile Weather Unit
- P Pump
- Spot Fire
- ▲ Value at Risk
-) Division Break
- XXXXX Completed Dozer Line
- H · H Completed Hand Line
- Uncontrolled Fire Edge
- Range Fence
- Range Water Pipelines
- Parcels
- Boreal Toad Habitat



- Isolated Heat
- Heat Perimeter
- Intense Heat
- Scattered Heat

106°7'W 106°6'W 106°5'W 106°4'W 106°3'W 106°2'W 106°1'W 106°0'W 105°59'W 105°58'W 105°57'W