


106°7'W 106°6'W 106°5'W 106°4'W 106°3'W 106°2'W 106°1'W 106°0'W 105°59'W 105°58'W 105°57'W

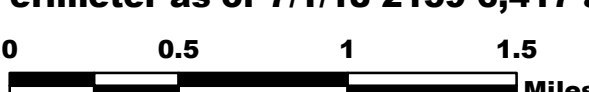
WESTON PASS CO-PSF-001278

Operations Map 7/3/18


IR Perimeter as of 7/1/18 2159 6,417 ac.



Datum NAD83

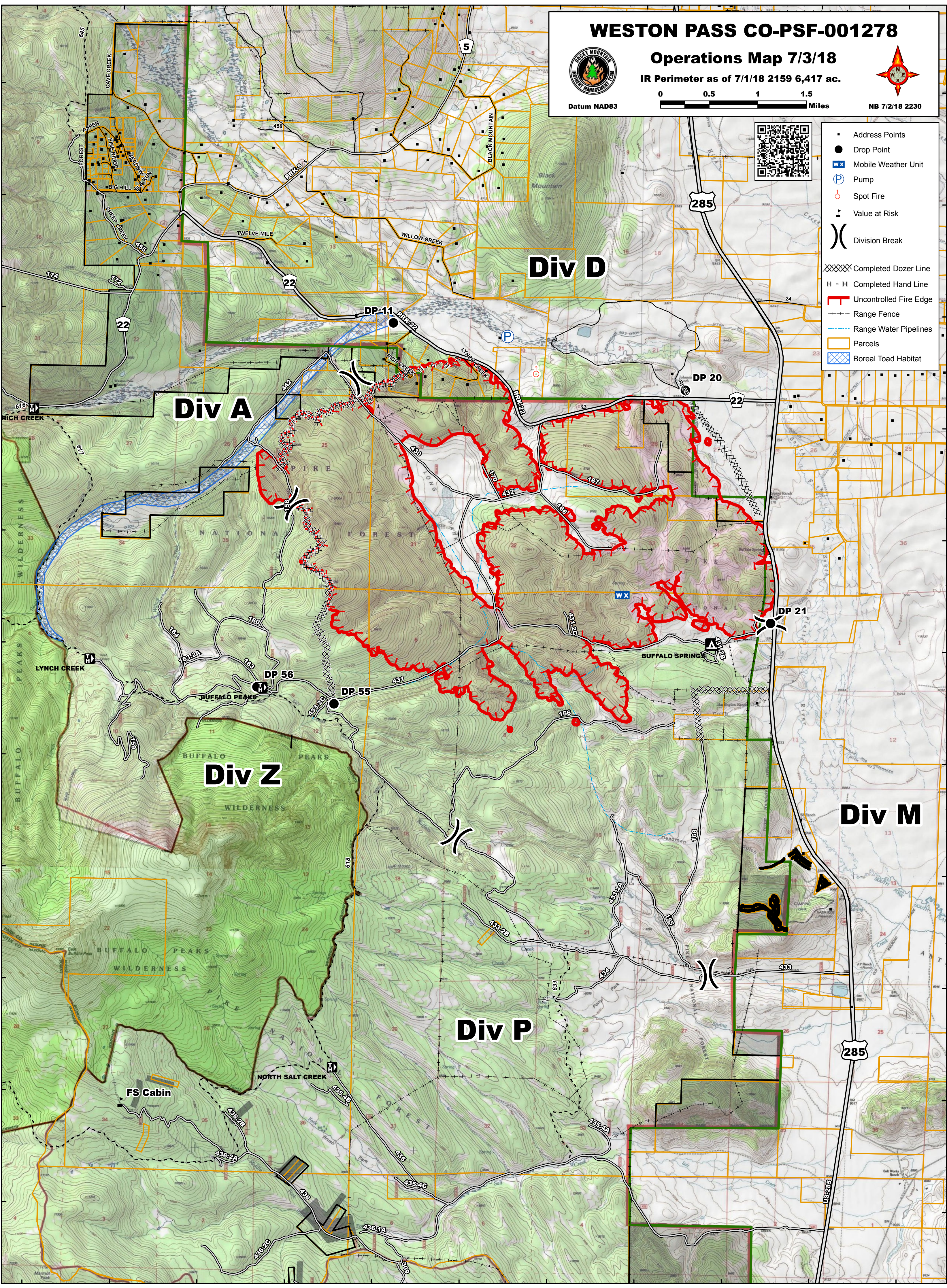


0 0.5 1 1.5 Miles



NB 7/2/18 2230

39°7'N
39°6'N
39°5'N
39°4'N
39°3'N
39°2'N
39°1'N
39°0'N
38°59'N
38°58'N
38°57'N



- Address Points
- Drop Point
- WX Mobile Weather Unit
- P Pump
- Spot Fire
- ▲ Value at Risk
-) Division Break
- XXXXX Completed Dozer Line
- H - H Completed Hand Line
- Uncontrolled Fire Edge
- Range Fence
- Range Water Pipelines
- Parcels
- Boreal Toad Habitat



Div A

Div D

Div Z

Div P

Div M

FS Cabin

DP-11

DP 20

DP 21

DP 56

DP 55

285

106°7'W 106°6'W 106°5'W 106°4'W 106°3'W 106°2'W 106°1'W 106°0'W 105°59'W 105°58'W 105°57'W